

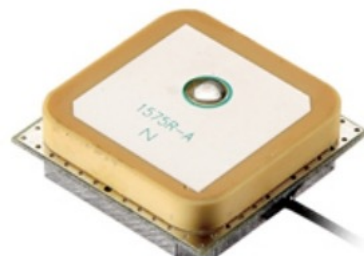
NGPSA2525BJ1R602G1X100A1F

BEIDOU/GPS/GLONASS Active Patch Antenna



Descriptions

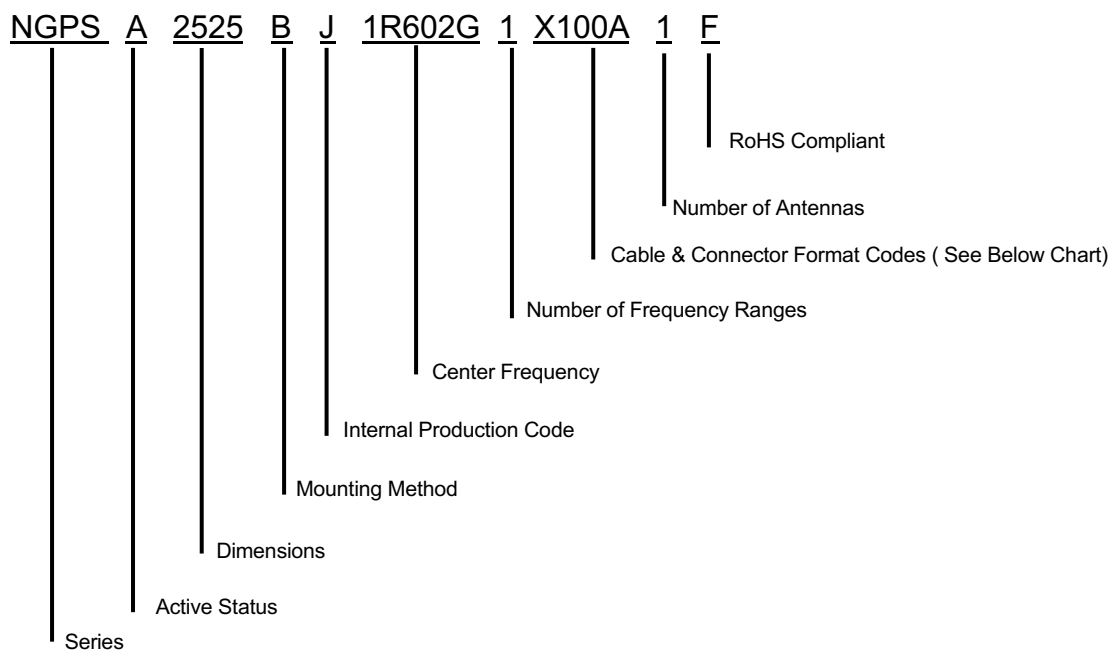
NGPSA2525BJ1R602G1X100A1F is an Active Patch Antenna designed for GPS applications. It operates within the frequency of 1575.42 ~ 1602 MHz making it perfect for use in tracking, and fleet management



Features

- Active Patch Antenna
- GPS & GLONASS
- RoHS Compliant

Part Number Breakdown



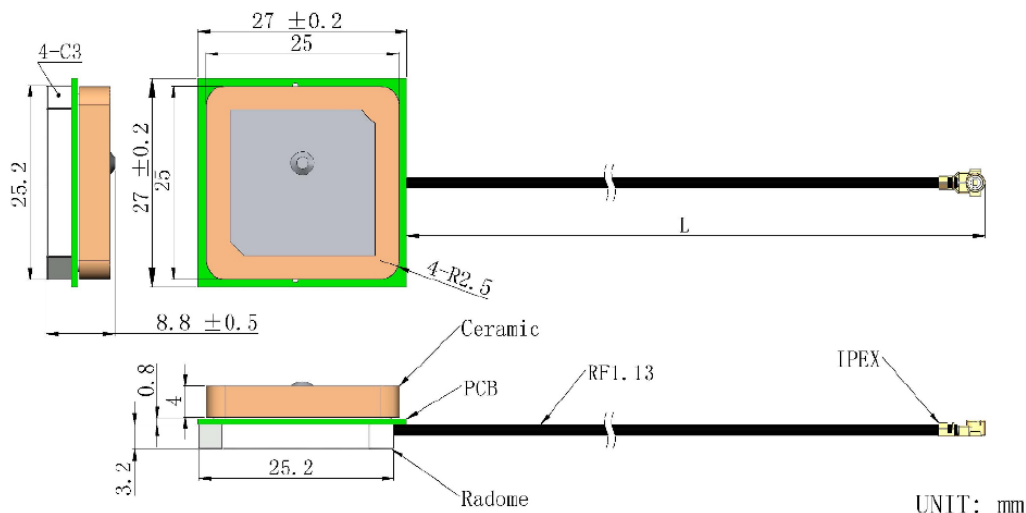
Cable & Connector Format Codes

Connector	Cable Length	Cable Type
IPEX (X)	100 mm	RF1.13 (A)

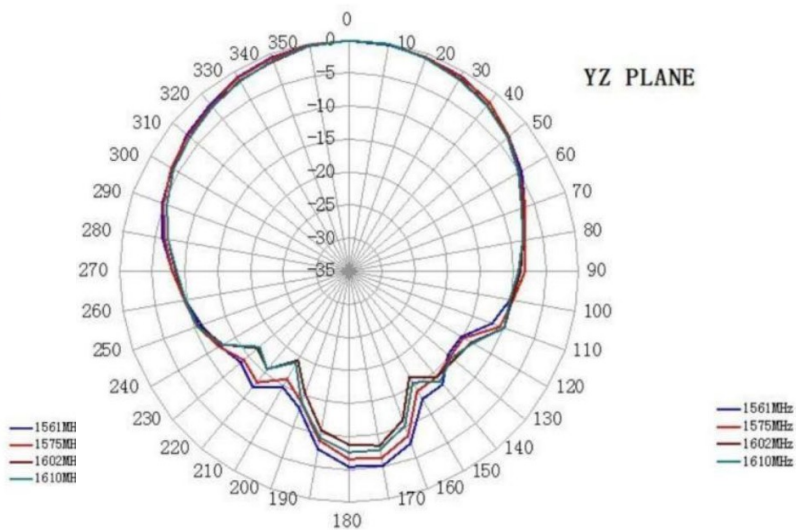
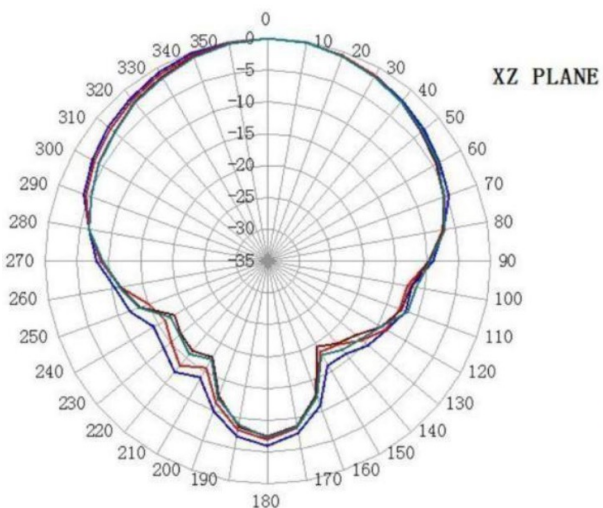
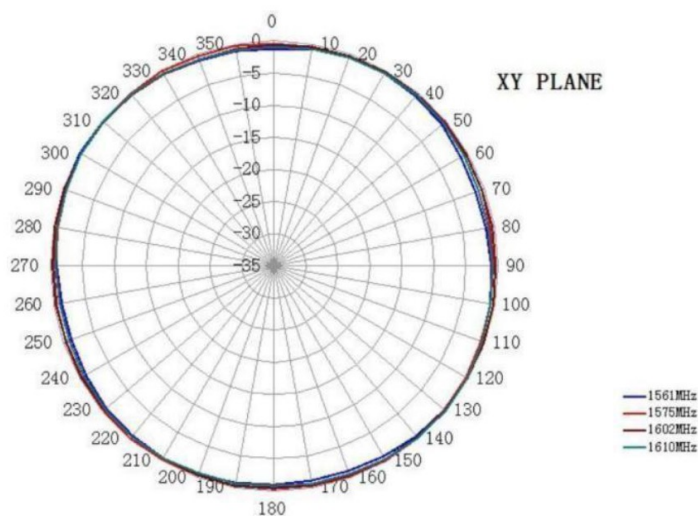
Specifications

Electrical	
Frequency Range	1561~ 1602 MHz
Center Frequency	1575.42 MHz
VSWR	< 1.5
Gain @ Zenith	5 dBic
Axial Ratio	3 dB
Polarization	RHCP
Impedance	50Ω
LNA	
Gain	28 ± 2dB
Noise Figure	< 1.5
Filter Insertion Loss	< 3 dB
Ex-band Atten	12dB@CF+50MHz 16dB@CF-50MHz
Supply Voltage	2.2 ~ 5V DC
Current Consumption	5 ~ 15mA
VSWR	< 2.0
Environmental	
Operating Temperature	-40°C~+85°C
Relative Humidity	Up to 75%
Vibration	10 ~ 55Hz 1.5mm Amplitude 2 Hours
PCB	27 mm x 27 mm
RoHS Compliant	Yes

Dimensions

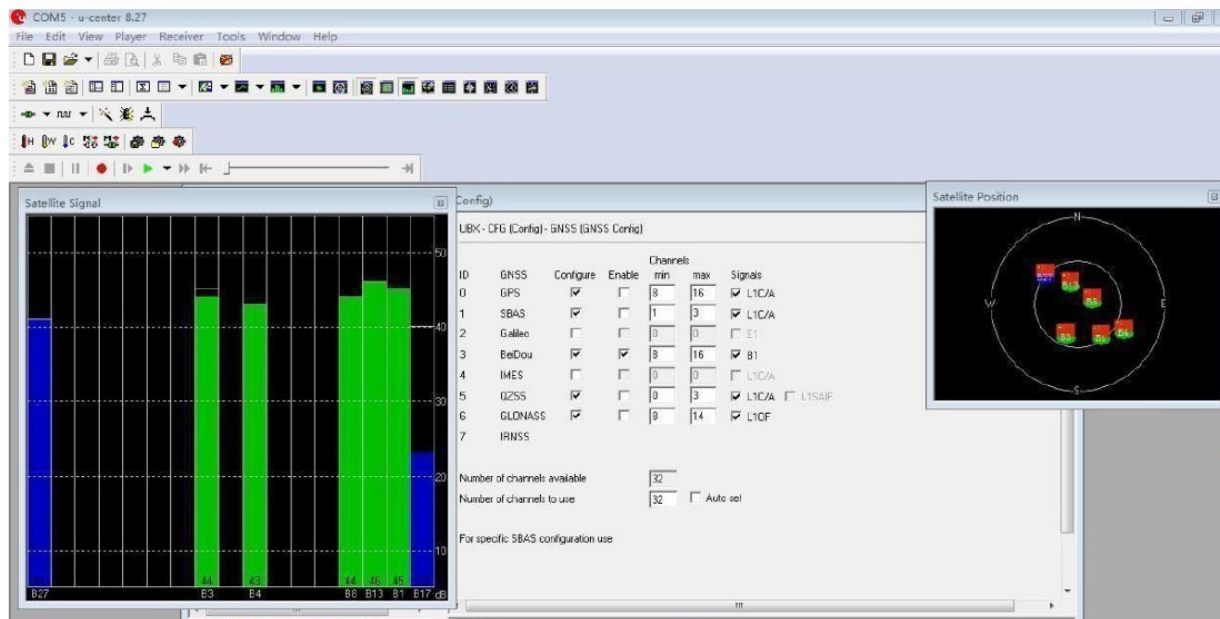


Radiation Patterns

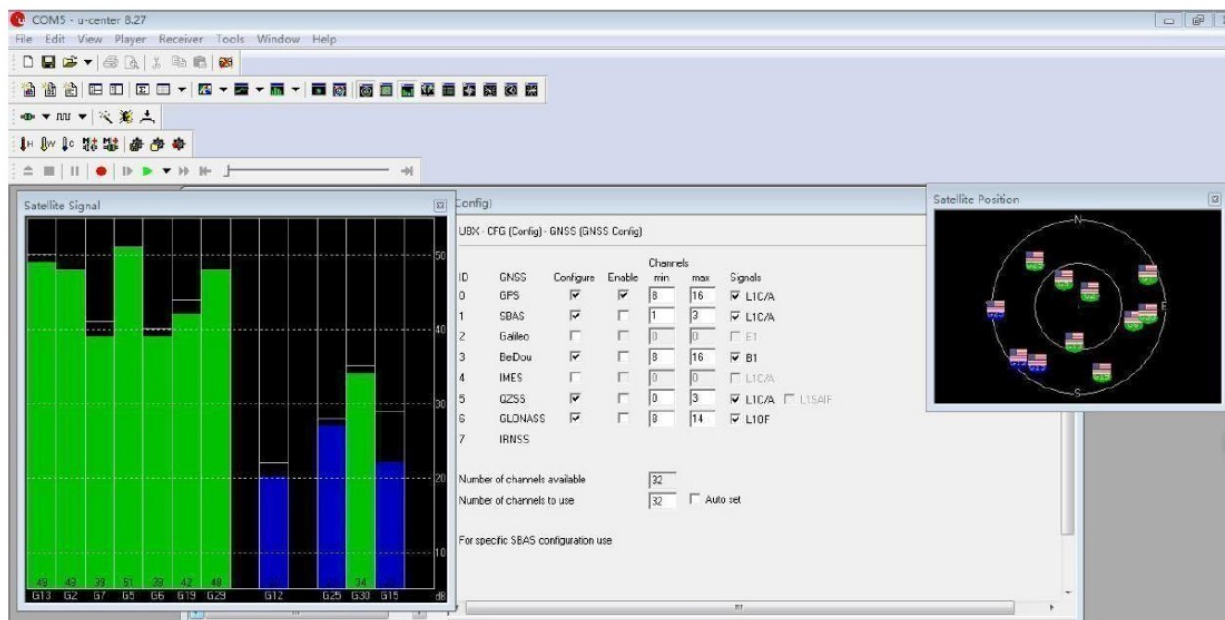


Single Receiving

BEIDOU



GPS



Single Receiving

GLONASS

