

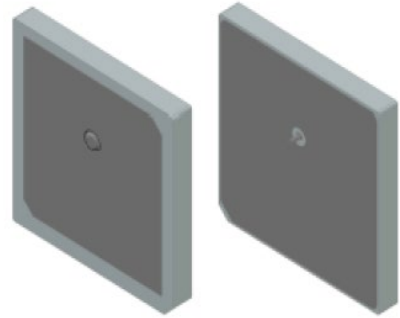
NGPS3535PJ1R575G31F

GNSS Patch Antenna; GPS L1 & GLONASS G1



Applications

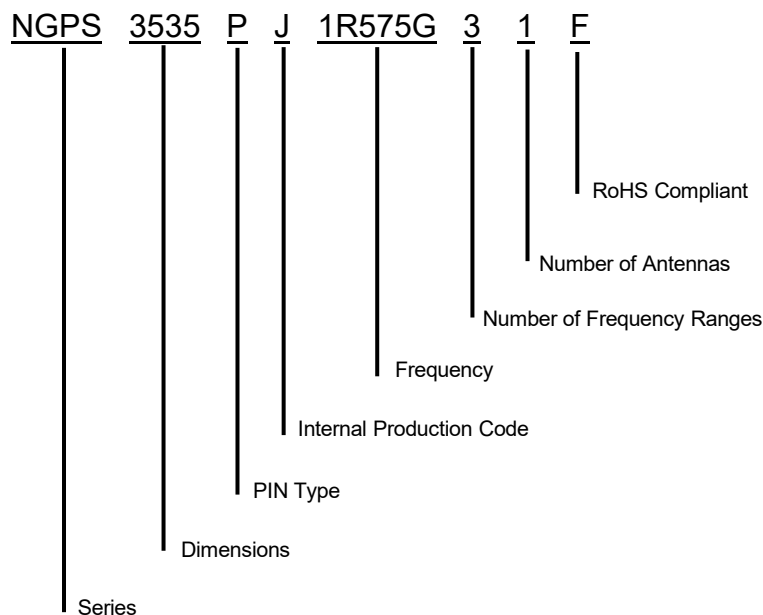
NGPS3535PJ1R575G31F is a Patch Antenna designed for GPS L1 & GLONASS G1 applications. It operates within the frequency range of 1561MHz and 1602 MHz making it perfect for use in Navigation and Fleet Tracking



Features

- High Gain, Compact
- SMT Type
- RoHS Complaint

Part Number Breakdown



NGPS3535PJ1R575G31F

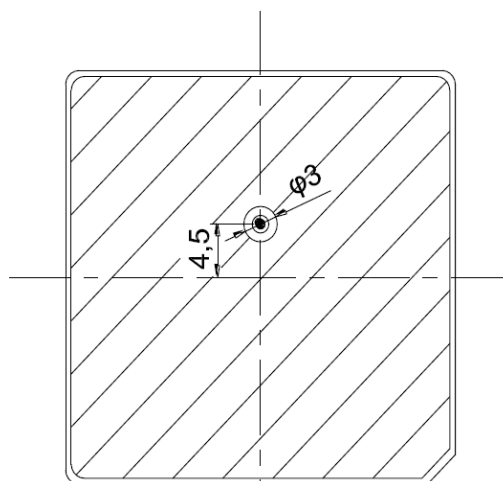
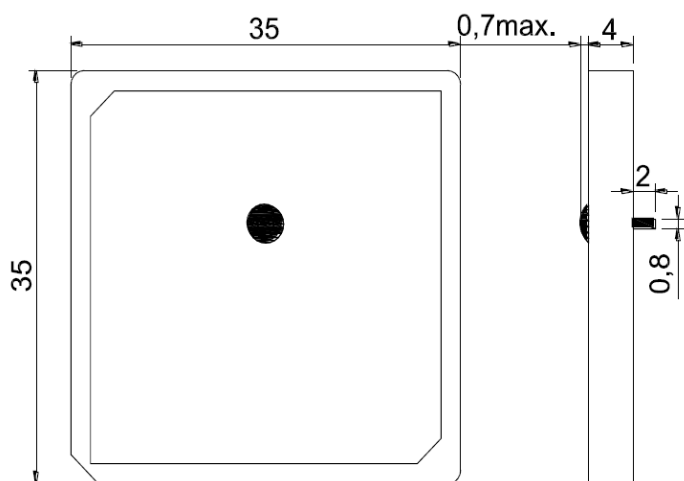
GNSS Patch Antenna; GPS L1 & GLONASS G1



Specifications

Electrical	
Frequency Range	1561 MHz 1575.42 MHz 1602 MHz
Return Loss	≥ 10 dB
Gain @ Zenith	2.0 dBi
Polarization	RHCP
Impedance	50 Ω
Environmental	
Operating Temperature -	-40°C~+85°C
Frequency Temperature Coefficient	± 20 ppm/°C
RoHS Compliant	Yes

Dimension Drawing



Tolerance Unless Otherwise Specified: ± 0.30
Unit: mm

The last "X" is the serial number of month

NGPS3535PJ1R575G31F

GNSS Patch Antenna; GPS L1 & GLONASS G1



Test Fixture



Antenna Patterns

