

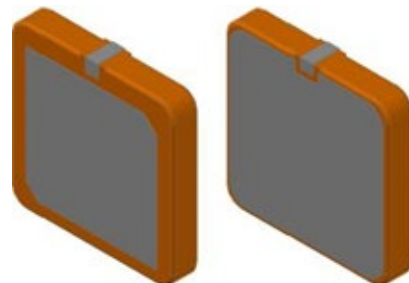
NGPS2525SJ1R575G2U1F

GNSS Patch Antenna; GPS L1 & GLONASS G1



Description

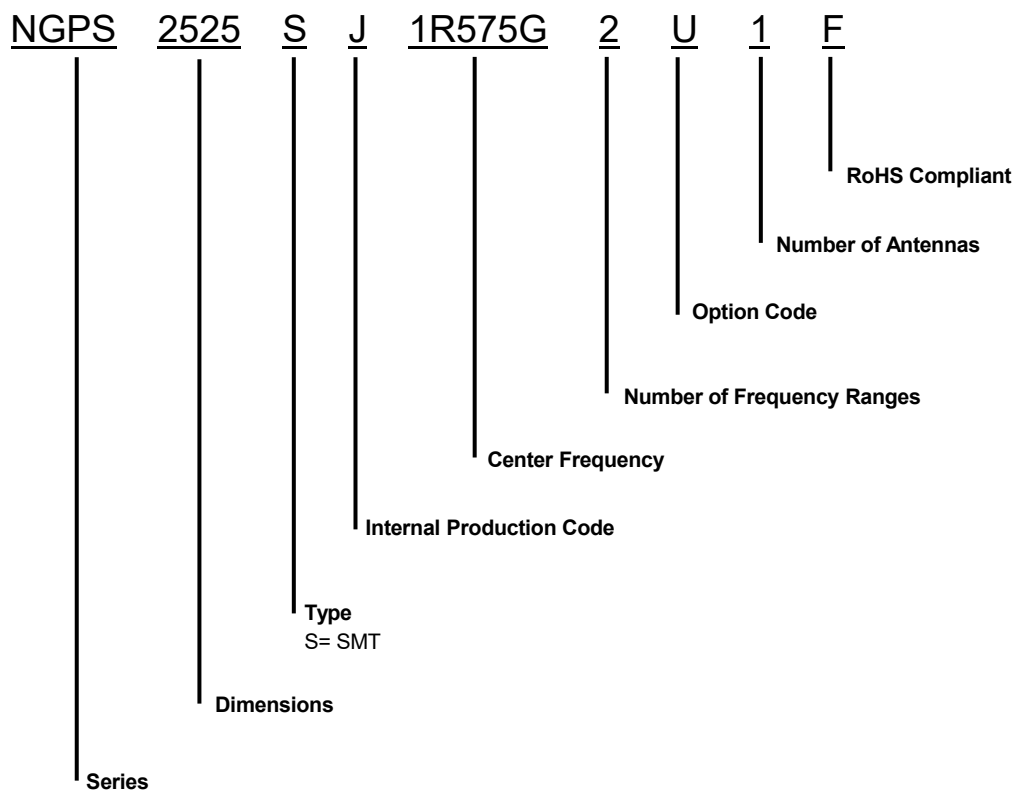
NGPS2525SJ1R575G2U1F is a Patch Antenna designed for GNSS L1 applications. It operates within the frequency of 1575 & 1602 MHz making it perfect for use in Navigation and Fleet Tracking



Features

- High Gain, Compact
- SMT Type
- RoHS Complaint

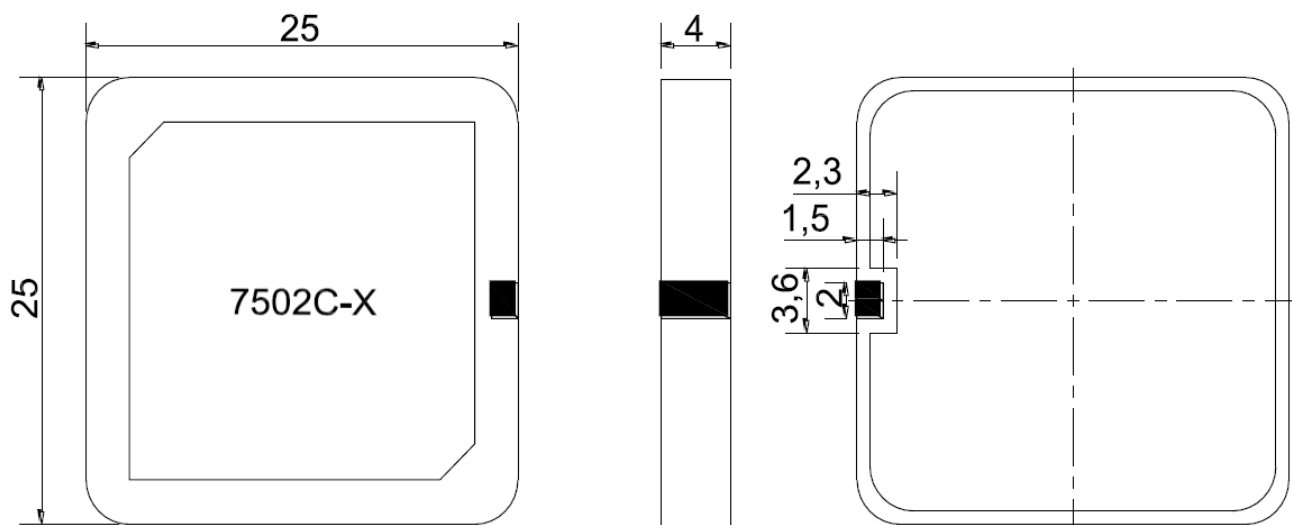
Part Number Breakdown



Specifications

Electrical	
Frequency Range	1575.42 MHz 1602 MHz
Return Loss	≥ 10 dB
Gain @ Zenith	4.5 dBi
Polarization	RHCP
Impedance	50 Ω
Environmental	
Operating Temperature -	-40°C~+85°C
RoHS Compliant	Yes

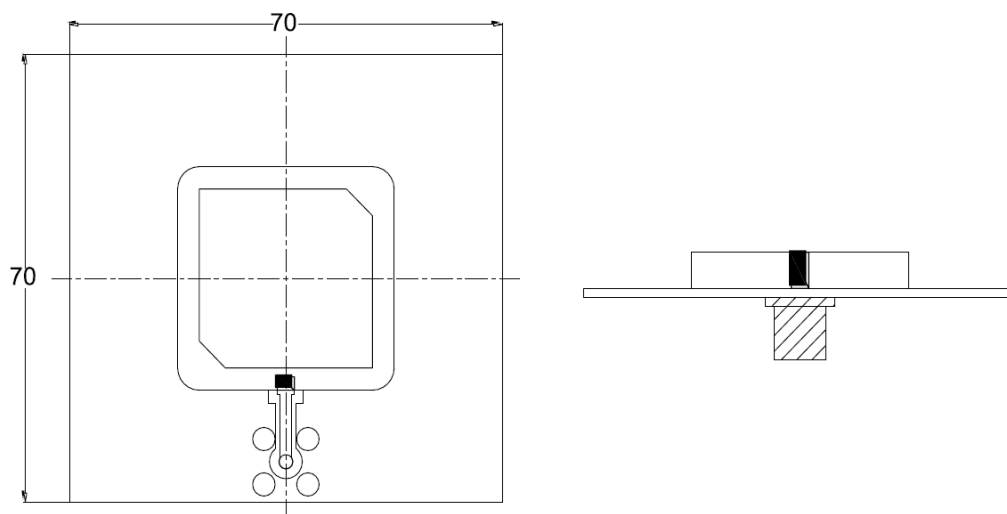
Dimension Drawing



The last "X" is the serial number of month

Tolerance Unless Otherwise Specified: ± 0.30
Unit: mm

Test Fixture



Antenna Patterns

