

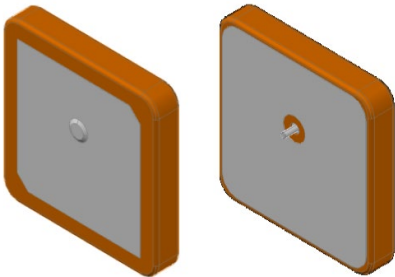
NGPS2525PJ1R615G1A1F

1615 MHz Iridium Patch Antenna



Description

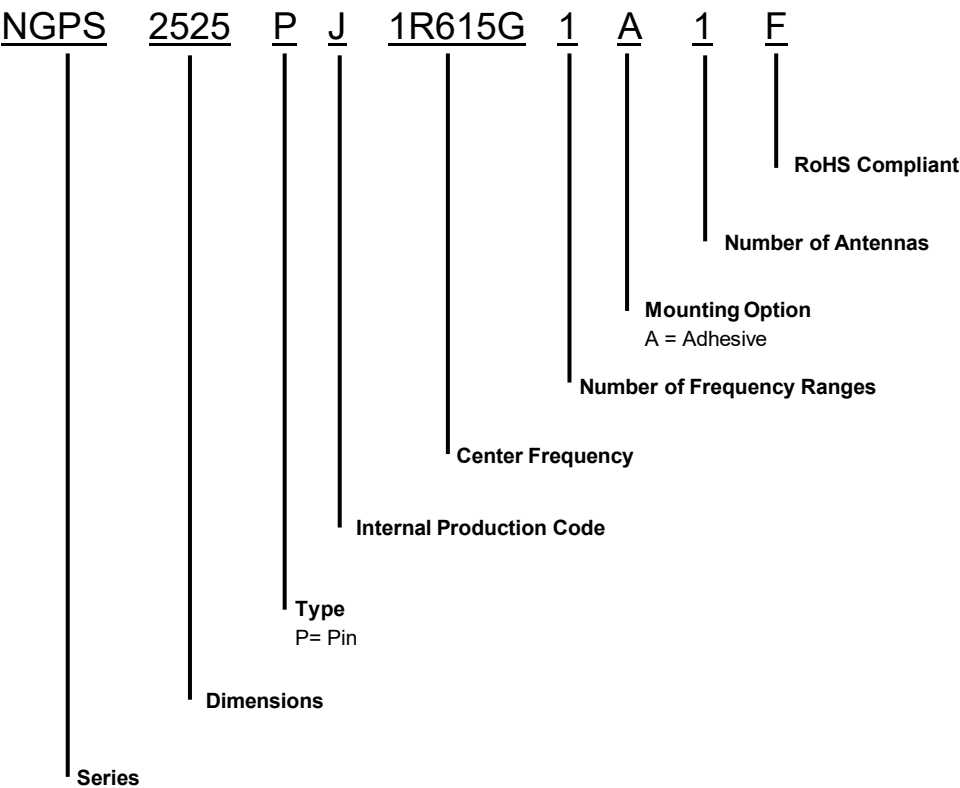
NGPS2525PJ1R615G1A1F is a Patch Antenna designed for Iridium applications. It operates within the frequency of 1615 MHz making it perfect for use in tracking, aviation and satellite communication



Features

- High Gain, Compact
- Pin Type
- RoHs Complaint

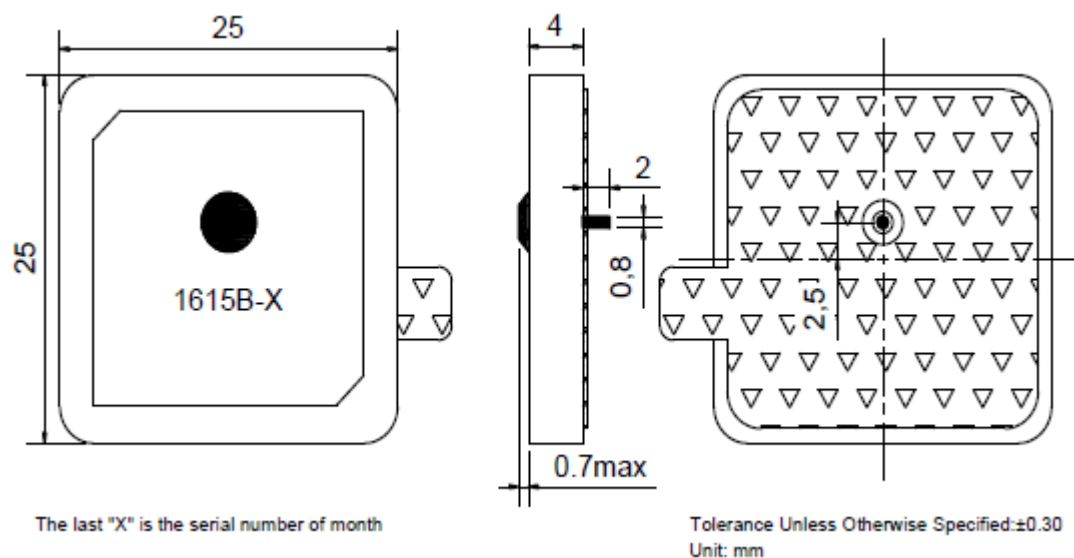
Part Number Breakdown



Specifications

Electrical	
Frequency Range	1615 ± 3.0 MHz
Return Loss @ F0	≥ 15 dB
Gain	5 dBic (max.)
Axial Ratio	≤ 3
Polarization	LHCP
Impedance	50Ω
Environmental	
Operating Temperature	-40°C~+85°C
Ground Plane	60 x 60 mm
RoHS Complaint	Yes

Dimensions

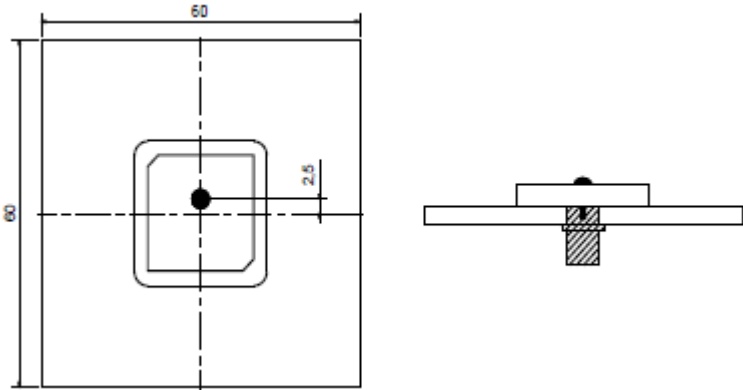


NGPS2525PJ1R615G1A1F

1615 MHz Iridium Patch Antenna



Test Fixture



Antenna Patterns

