

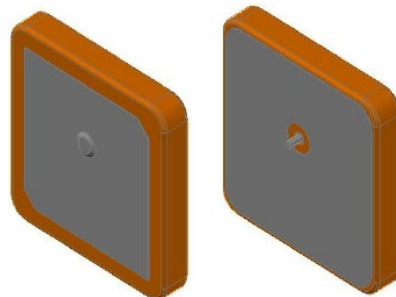
NGPS2525PJ1R575G2BA1F

GNSS Patch Antenna; GPS L1 & GLONASS G1



Description

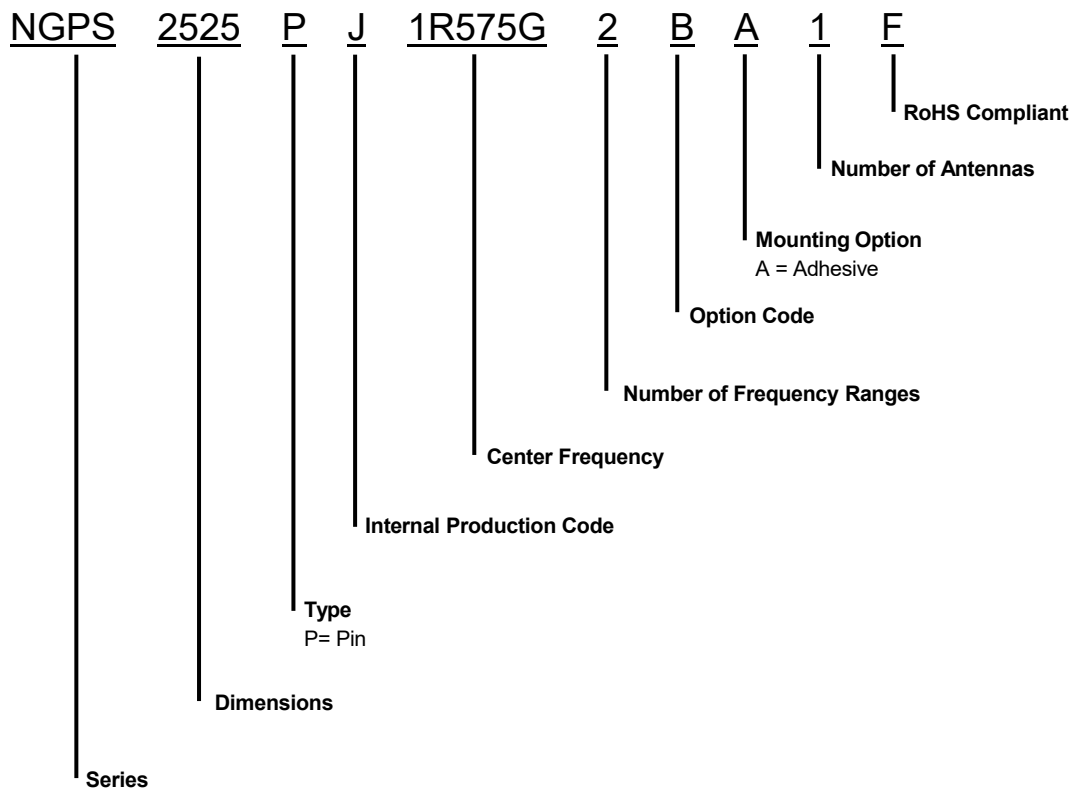
NGPS2525PJ1R575G2BA1F is a Patch Antenna designed for GPS L1 & Glonass G1 applications. It operates within the frequency range of 1561 ~ 1602MHz making it perfect for use in Navigation and Fleet Tracking



Features

- High Gain, Compact
- Pin Type
- RoHs Complaint

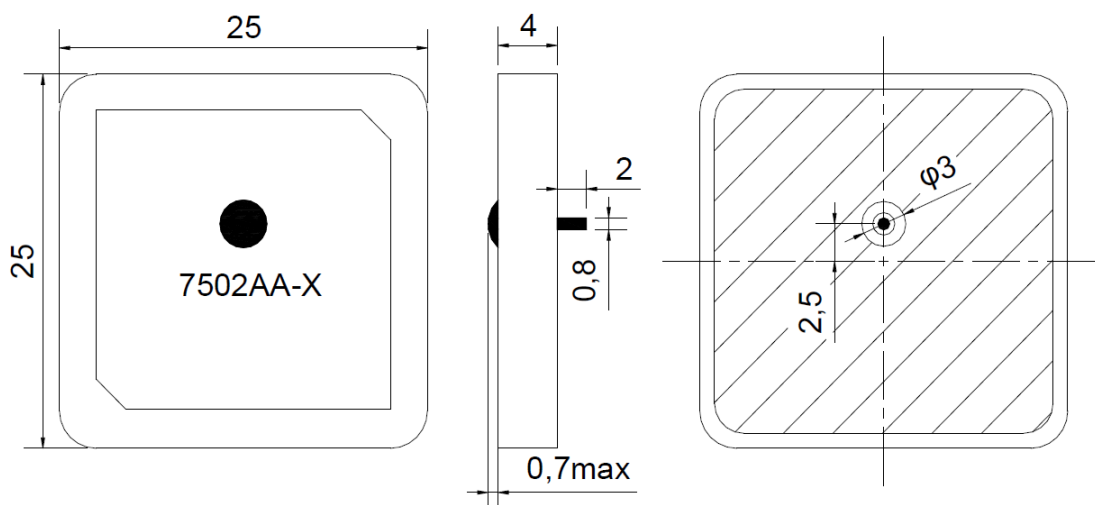
Part Number Breakdown



Specifications

Electrical	
Frequency Range	1575.42 MHz 1602 MHz
Return Loss @ F0	≥ 10 dB
Gain	2.0 dBi typ.
Polarization	RHCP
Impedance	50Ω
Environmental	
Operating Temperature	-40°C~+85°C
Frequency Temperature Coefficient	±20 ppm/°C
Ground Plane	50 x 50 mm
RoHS Complaint	Yes

Dimensions



The last "X" is the serial number of month

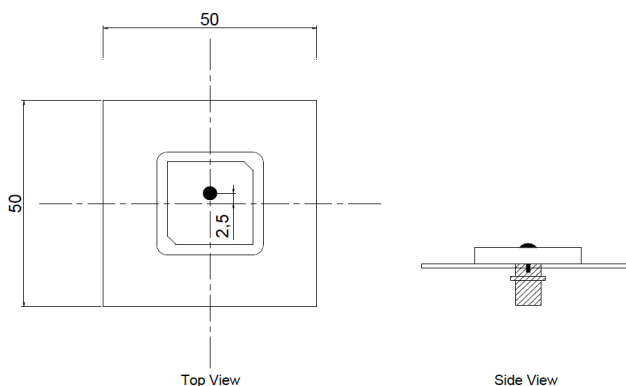
Tolerance Unless Otherwise Specified: ±0.30
Unit: mm

NGPS2525PJ1R575G2BA1F

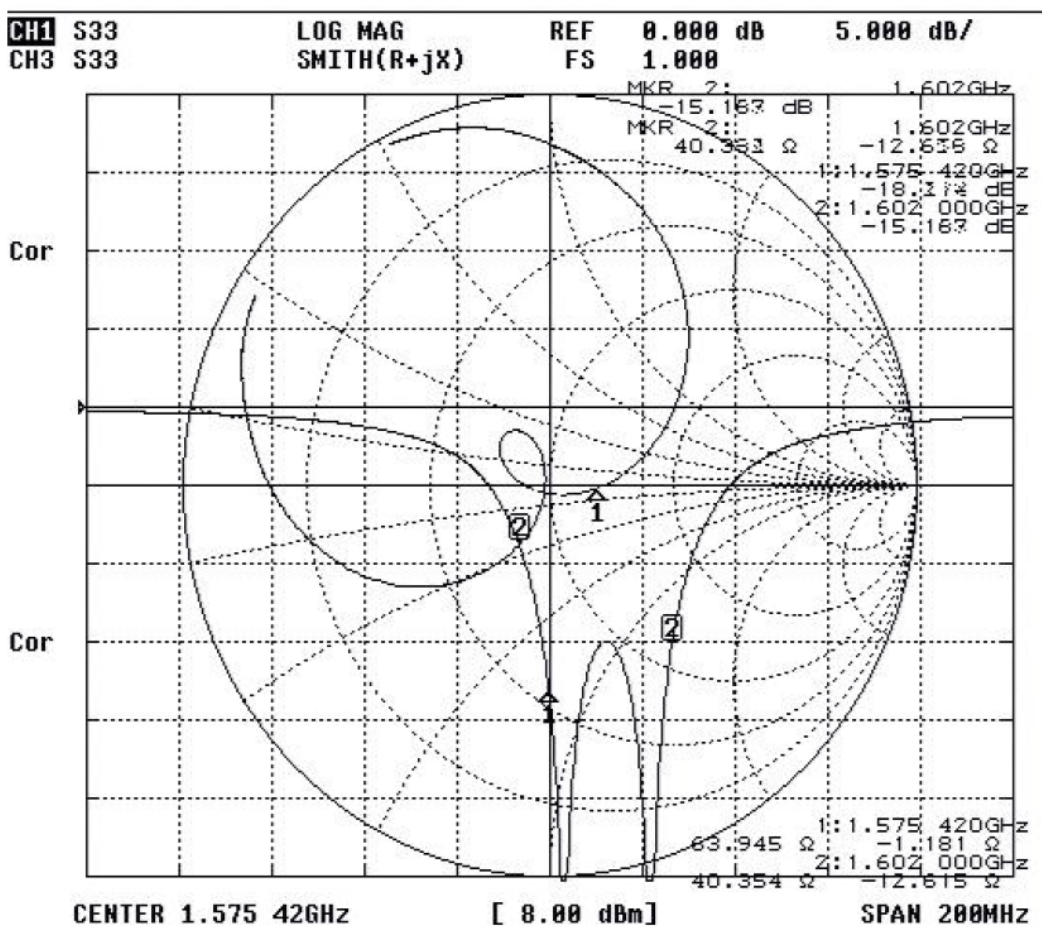
GNSS Patch Antenna; GPS L1 & GLONASS G1



Test Fixture



Antenna Patterns



Performance Passives By Design

NIC Components Corp.
100 Baylis Road. Melville, NY 11747

Page 3
www.niccomp.com

Last Updated 1/14/2025. Specification subject to change without notice. Please check web site or contact NIC for latest information