

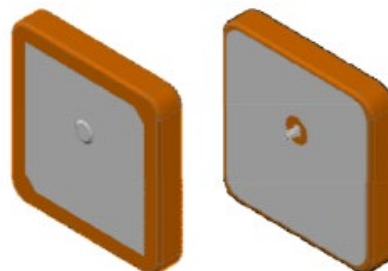
NGPS2525PJ1R575G1HA1F

GNSS Patch Antenna; GPS L1



Applications

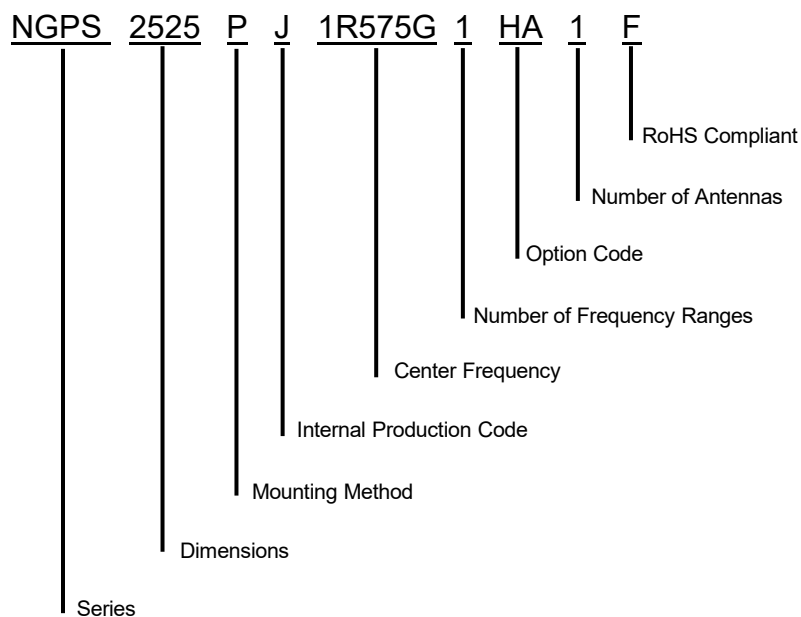
NGPS2525PJ1R575G1HA1F is a Patch Antenna designed for GPS L1 applications. It operates within the frequency of 1575.42 MHz making it perfect for use in Navigation and Fleet Tracking.



Features

- High Gain, Compact
- Pin Type
- RoHS Complaint

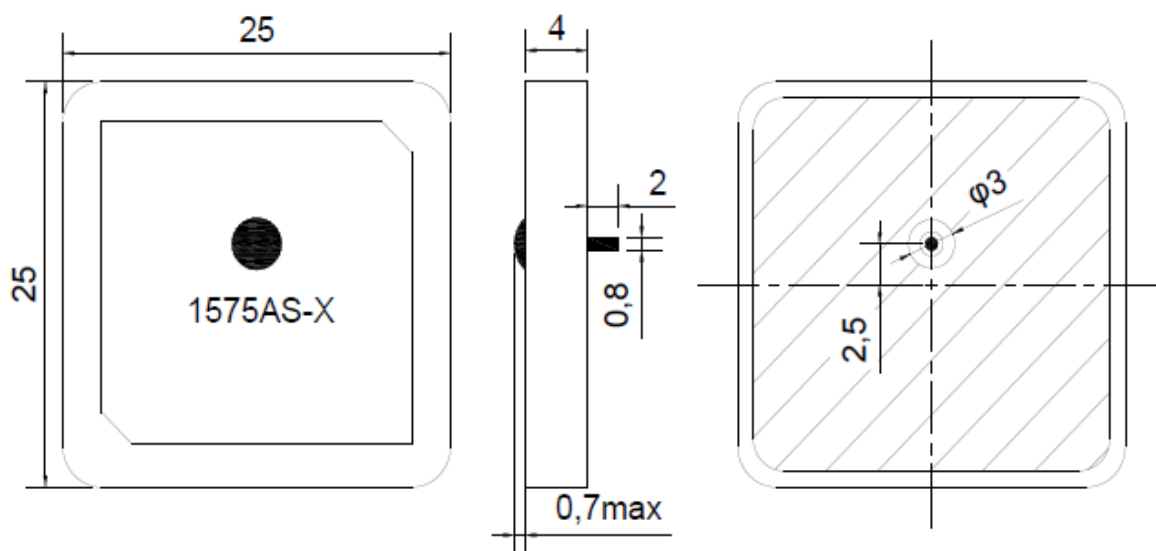
Part Number Breakdown



Specifications

Electrical	
Frequency Range	1575.42 ± 3 MHz
Return Loss	≥ 20 dB
Bandwidth @ 10db RL	≥ 10 MHz
Gain	3.5 dBi
Polarization	RHCP
Impedance	50Ω
Environmental	
Operating Temperature -	-40°C~+85°C
Frequency Temperature Coefficient	±20 ppm/°C
RoHS Compliant	Yes

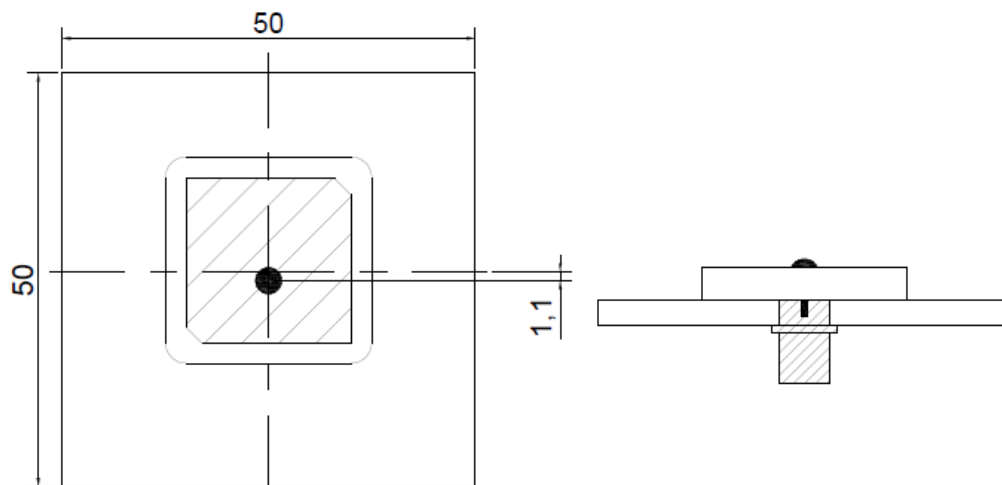
Dimension Drawing



The last "X" is the serial number of month

Tolerance Unless Otherwise Specified: ±0.30
Unit: mm

Test Fixture



Characteristics

