

NGPS2525PJ1R176G2A2F

GPS L1 + L5 Dual band Patch Antenna



Applications

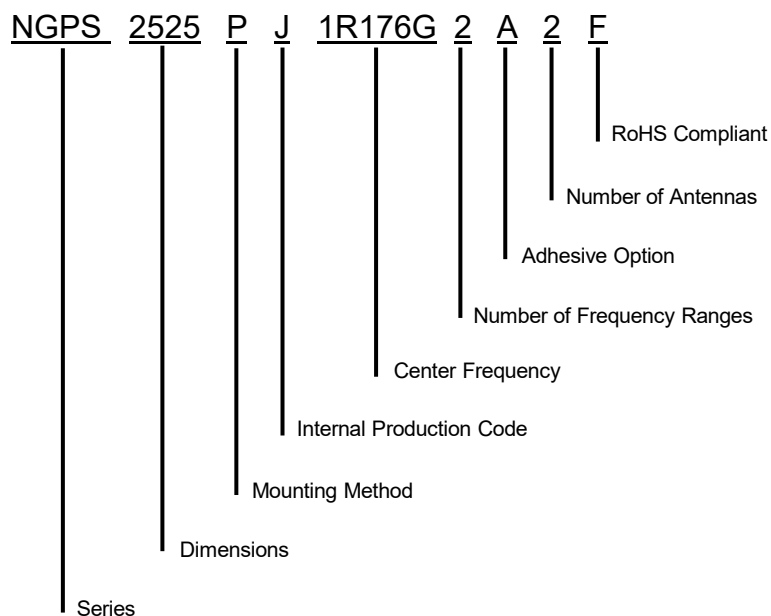
NGPS2525PJ0R903G1A1F is a Patch Antenna designed for GNSS L1 applications. It operates within the frequencies of 1176 MHz and 1575 MHz making it perfect for use in Navigation and Fleet Tracking

Features

- High Gain, Compact
- Pin Type
- RoHs Complaint



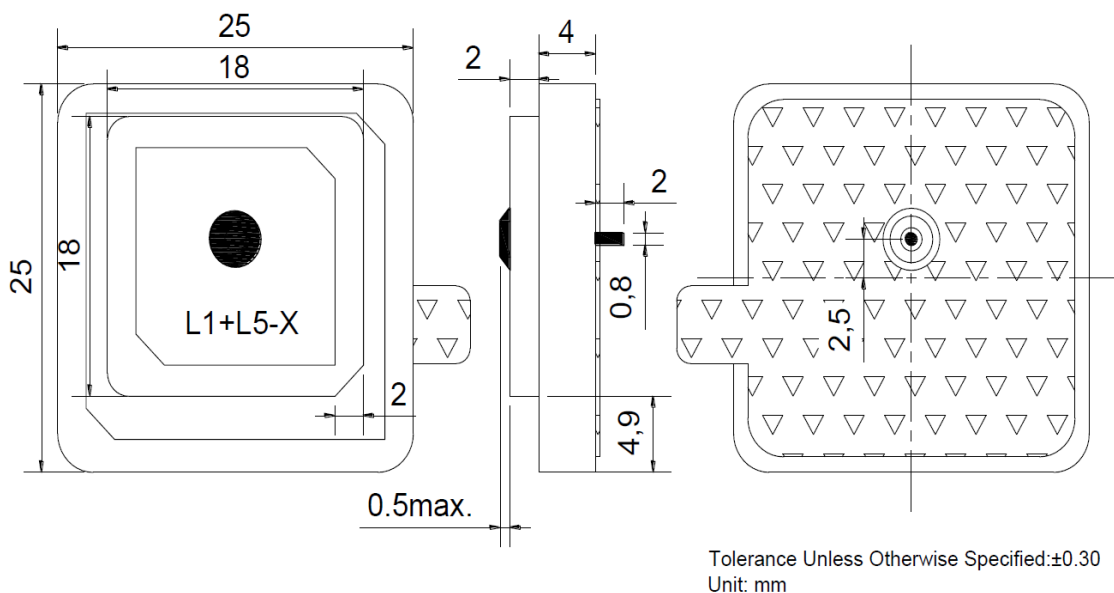
Part Number Breakdown



Specifications

Electrical		
Frequency Bands	L1	L5
Frequency Range	1575 MHz ± 3 MHz	1176 MHz ± 3 MHz
Return Loss @ F0	≥ 10 dB	
Gain	-	
Polarization	RHCP	
Impedance	50Ω	
Environmental		
Operating Temperature	-40°C~+85°C	
Frequency Temperature Coefficient	± 20 ppm/°C	
RoHS Complaint	Yes	

Dimension Drawing

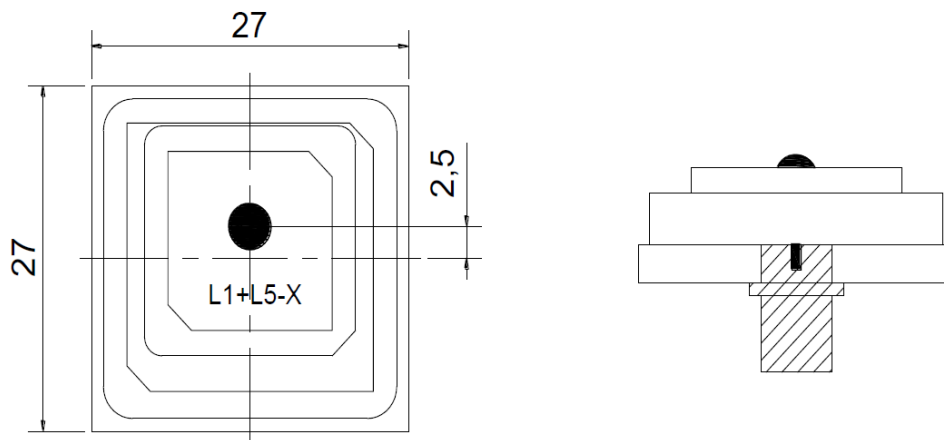


NGPS2525PJ1R176G2A2F

GPS L1 + L5 Dual band Patch Antenna



Test Fixture



Antenna Patterns

