

NGPS1818TJ1R575G21F

GPS & GLONASS SMT Patch Antenna



Features

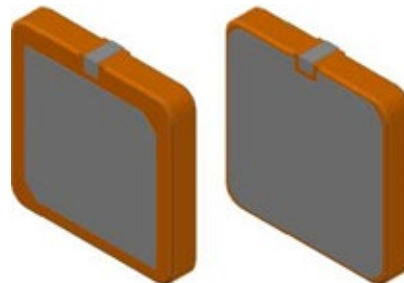
- High Gain, Compact
- Pin Type
- RoHs Complaint

Applications

- Tracking
- Fleet management

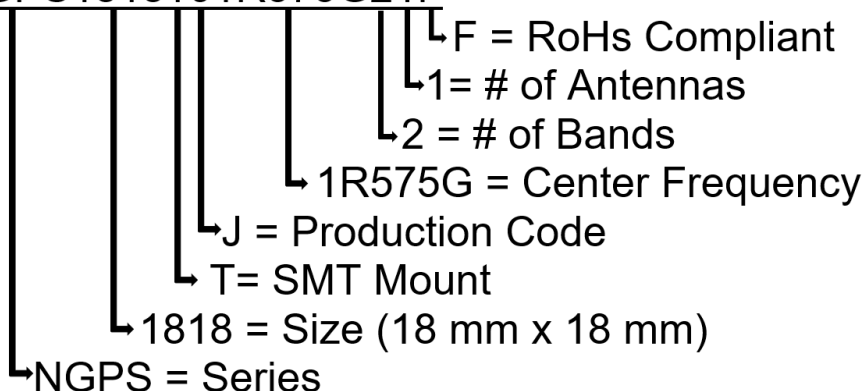
Specifications

Electrical	
Frequency Range	1575.42 MHz 1602 MHz
Return Loss @ F0	≥ 10 dB
Gain	2 dBi typ.*
Polarization	RHCP
Impedance	50Ω
*The gain will be affected by the size of GND.	
Environmental	
Operating Temperature	-40°C~+85°C
Frequency Temperature Coefficient	±20 ppm/°C
RoHS Complaint	Yes



Part Number Breakdown

NGPS1818TJ1R575G21F

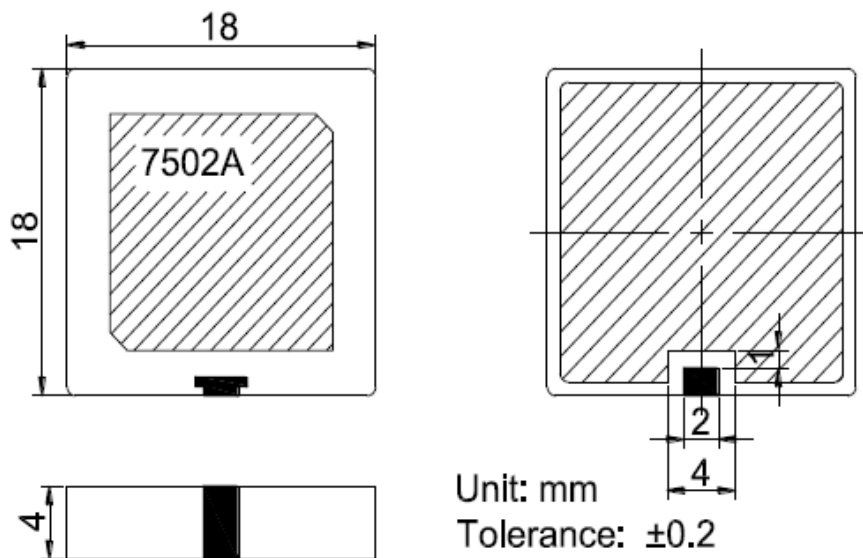


NGPS1818TJ1R575G21F

GPS & GLONASS SMT Patch Antenna



Dimension Drawing



7502A= Represents the Center Frequencies

Dimensions (mm) & Mechanical

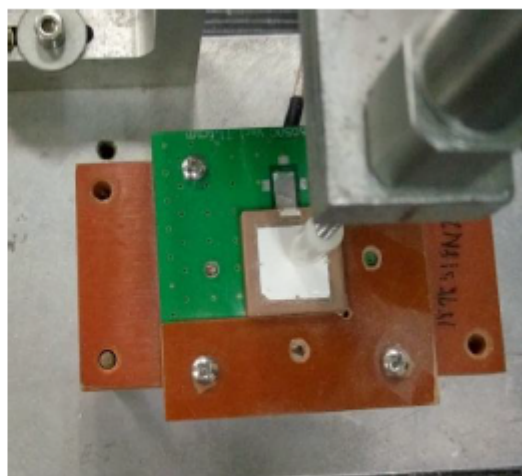
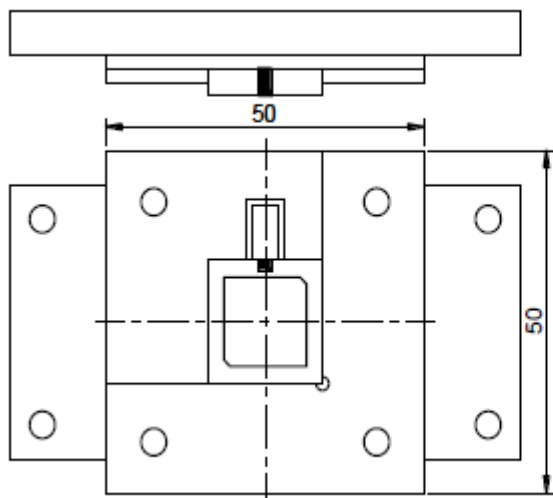
Body Length	18 ± 0.2
Width	18 ± 0.2
Thickness	4 ± 0.2
Ground Plane	50 x 50

NGPS1818TJ1R575G21F

GPS & GLONASS SMT Patch Antenna



Test Fixture



Antenna Patterns

