

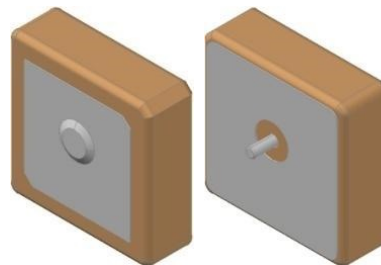
NGPS1010PJ1R575G1A1F

1575.42 MHz GPS Patch Antenna



Description

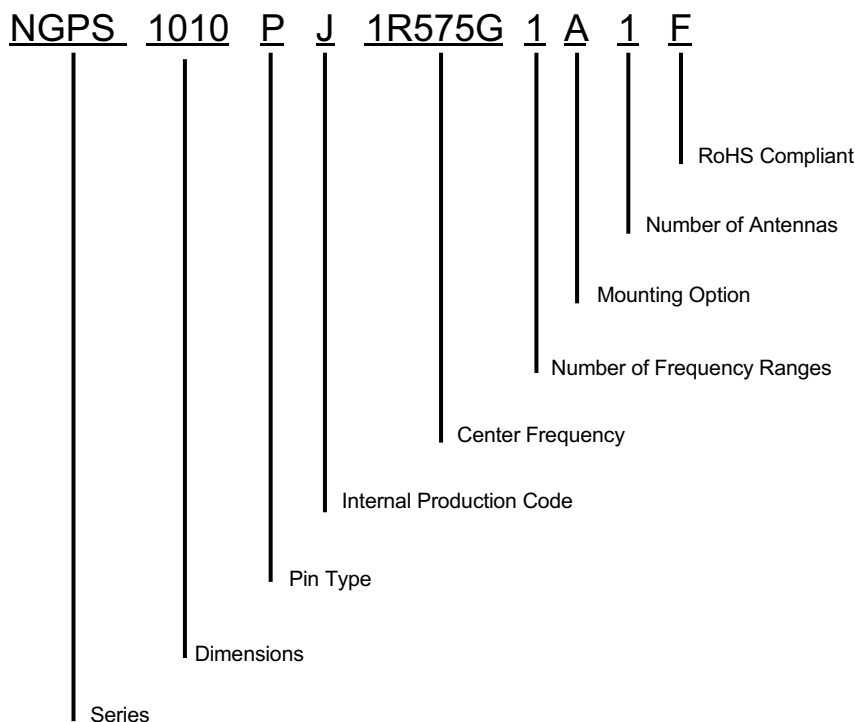
NGPS1010PJ1R575G1A1F is an Active Patch Antenna designed for GPS applications. It operates within the frequency of 1575.42 MHz making it perfect for use in tracking, and fleet management



Features

- High Gain, Compact
- Pin Type
- RoHs Complaint

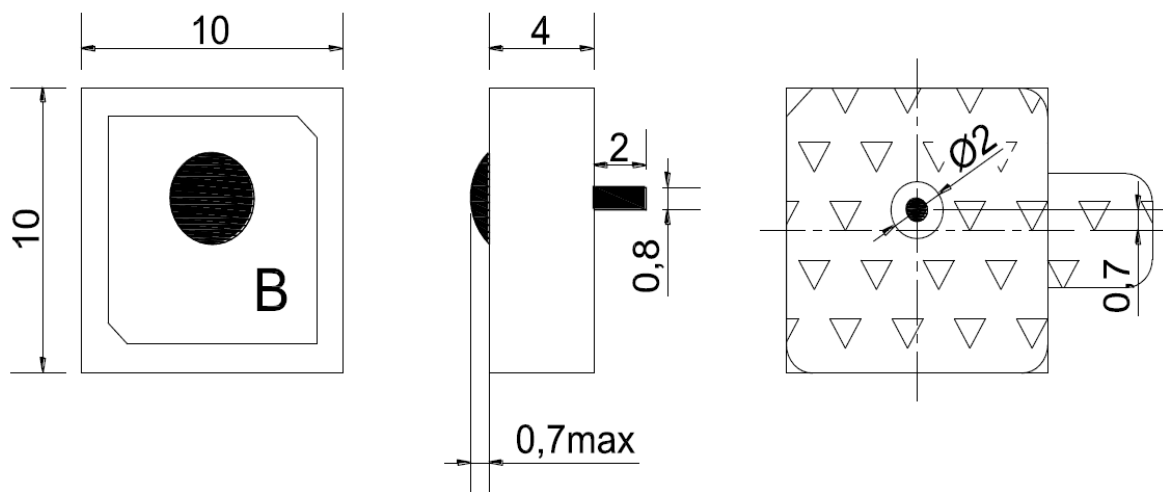
Part Number Breakdown



Specifications

Electrical	
Frequency Range	1575.42 MHz \pm 3 MHz
Return Loss	\geq 15dB
Bandwidth @ 10dB Return Loss	\geq 4 MHz
Gain	- 7 dBi
Polarization	RHCP
Impedance	50 Ω
Environmental	
Operating Temperature -	-40°C~+85°C
Frequency Temperature Coefficient	\pm 20 ppm/°C
RoHS Compliant	Yes

Dimensions



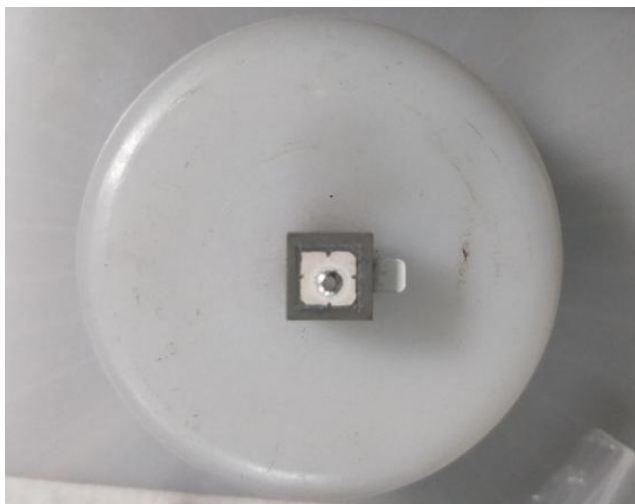
Tolerance: \pm 0.30
Unit: mm

NGPS1010PJ1R575G1A1F

1575.42 MHz GPS Patch Antenna



Test Fixture



Characteristics

