

NANF30X10AMW2R45G3F

WIFI 6E / 7 FPC Antenna



Description

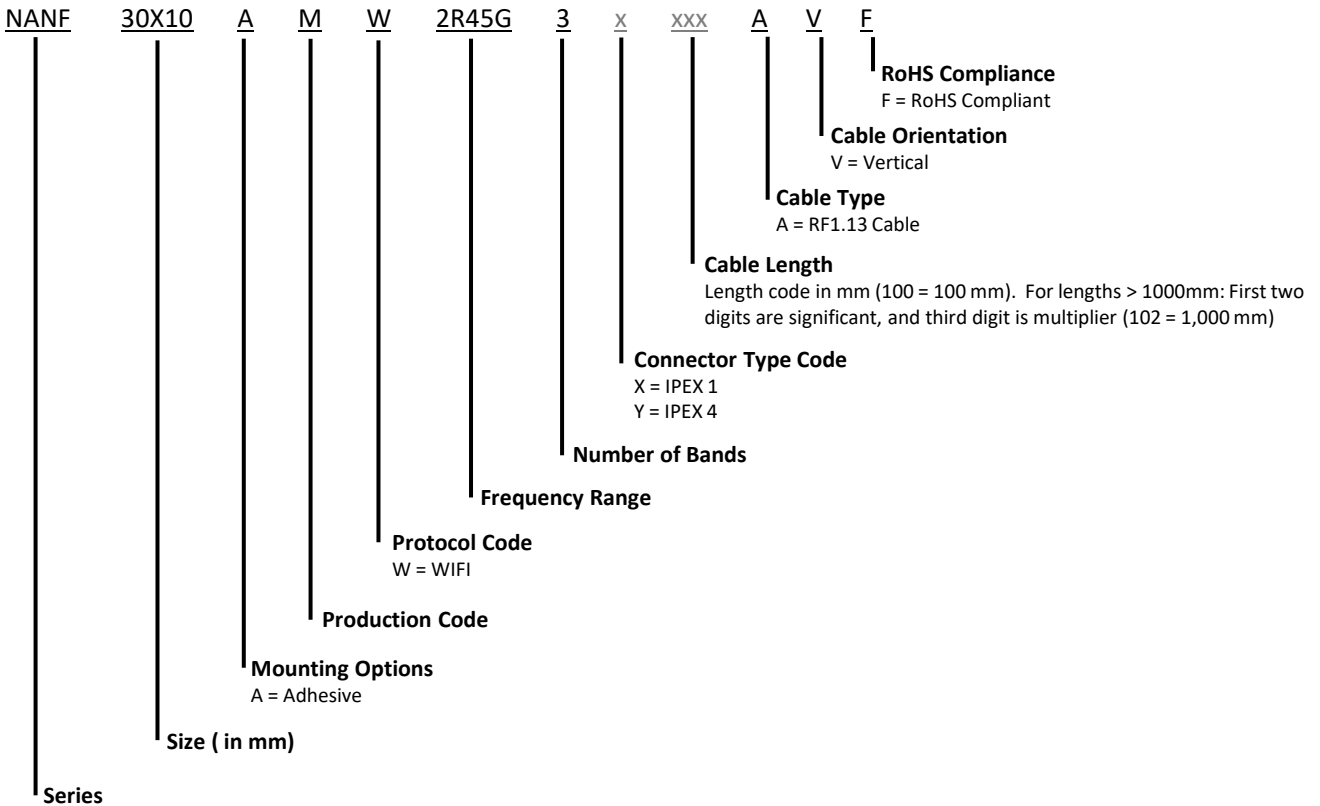
NANF30X10AMW2R45G3F is the base part number of a Flexible PCB Antenna designed for WIFI applications. It operates within the frequency ranges of 2400 ~ 2500 MHz, 5150 ~5850 MHz, and 5925 ~ 7125 MHz making it perfect for use in Gateways, Handheld devices, IoT devices and 2.4 GHz ISM applications.

Features

- 2.4 ~ 7.1GHz WIFI Protocols
- Ground Plane Independence dipole design
- Customizable Cable and Connector
- RoHS Compliant



Part Number Breakdown:



Standard Part Number Listing

Part Number	Connector	Cable Length	Cable Type	Cable Orientation
NANF30X10AMW2R45G3X120AVF	IPEX I	120 mm	RF1.13 Cable	Vertical
NANF30X10AMW2R45G3X180AVF	IPEX I	180 mm	RF1.13 Cable	Vertical

Performance Passives By Design

NIC Components Corp.
100 Baylis Road. Melville, NY 11747

Page 1
www.niccomp.com

NANF30X10AMW2R45G3F

WIFI 6E / 7 FPC Antenna



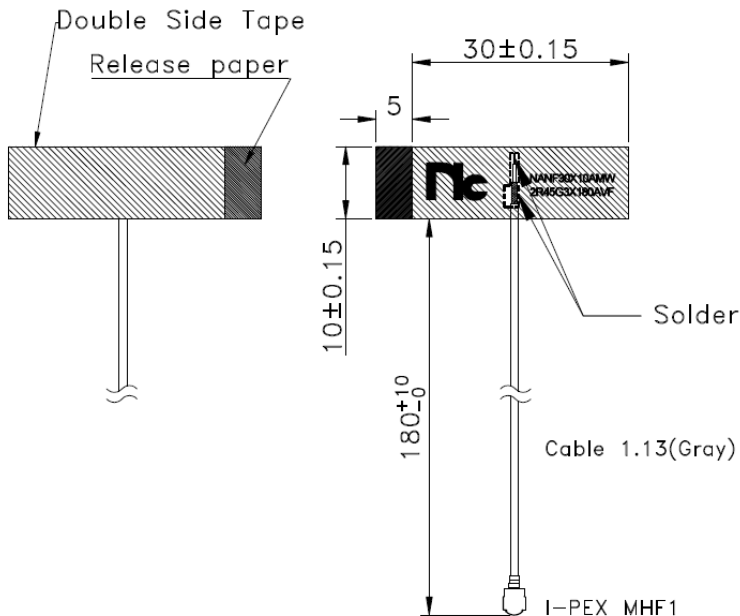
Part Number	Connector	Cable Length	Cable Type	Cable Orientation
NANF30X10AMW2R45G3Y120AVF	IPEX 4	120 mm	RF1.13 Cable	Vertical
NANF30X10AMW2R45G3Y180AVF	IPEX 4	180 mm	RF1.13 Cable	Vertical

The table represents assembled part numbers available on www.niccomp.com from standard connector and cable options. For options not listed above please contact NIC"

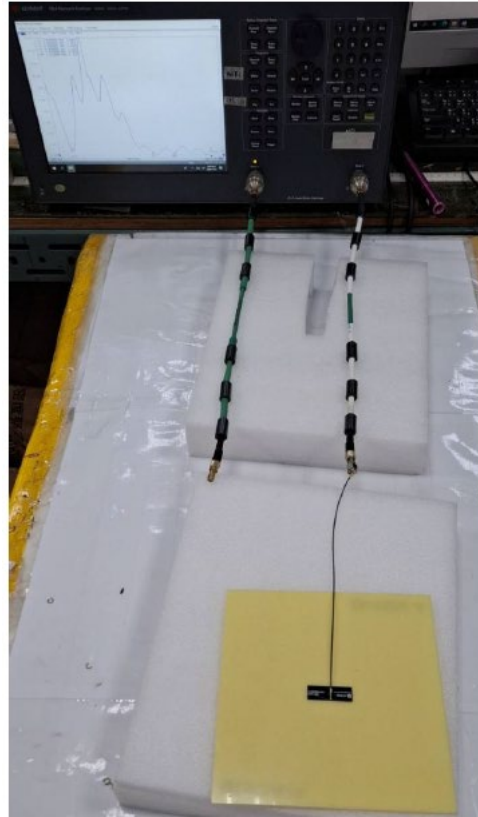
Specifications

Electrical			
Frequency Range	2400 ~2500 MHz	5150 ~5850 MHz	5925 ~7125 MHz
Peak Gain (w/ 120 mm cable)	2.4 dBi	4.6 dBi	6.3 dBi
V.S.W.R	≤ 2.5	≤ 2.0	≤ 2.3
Polarization	Linear		
Radiation	Omni directional		
Impedance	50Ω		
Environmental			
Operating Temperature	-40°C~+85°C		
Test Ground Size	Plastic, 150 x 150 mm		
RoHS Complaint	Yes		

Dimension Drawing



Test Configuration with Plastic Ground



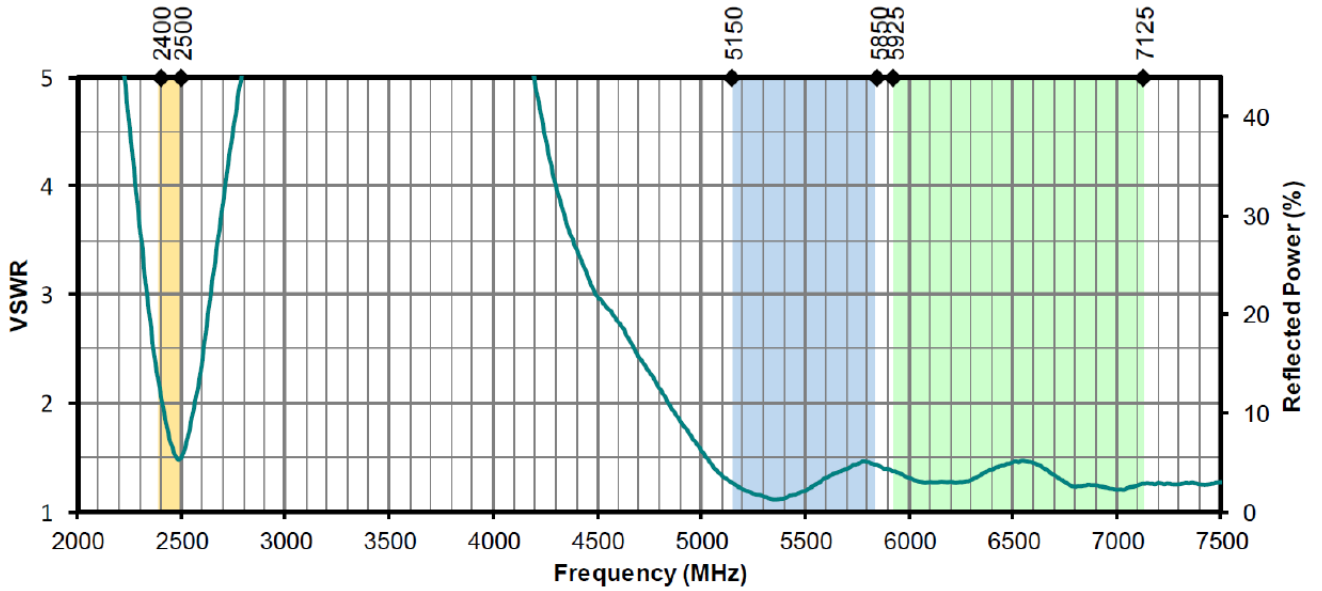
Adapter	N to IPEX
Test Distance	400 mm
Testing Cable Type	Semi-rigid
Test Table	Plastic
Test table size	150 x 150 mm
Location of Antenna	placed in the middle of the plastic Ground
Cable length	400 mm

NANF30X10AMW2R45G3F

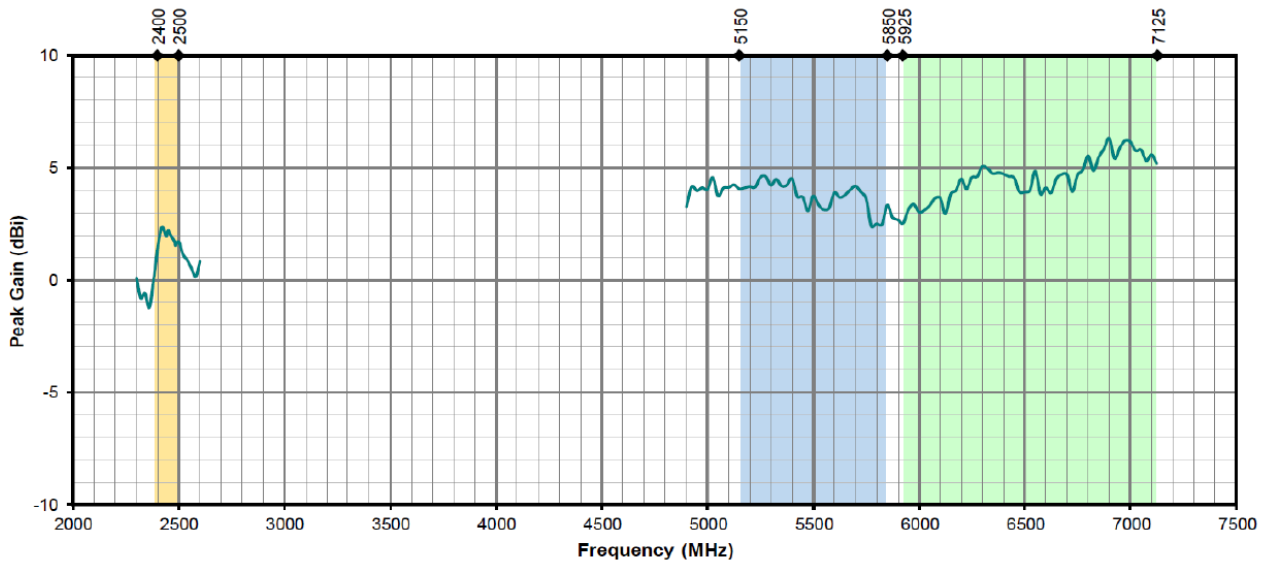
WIFI 6E / 7 External Whip Antenna



VSWR



Peak Gain

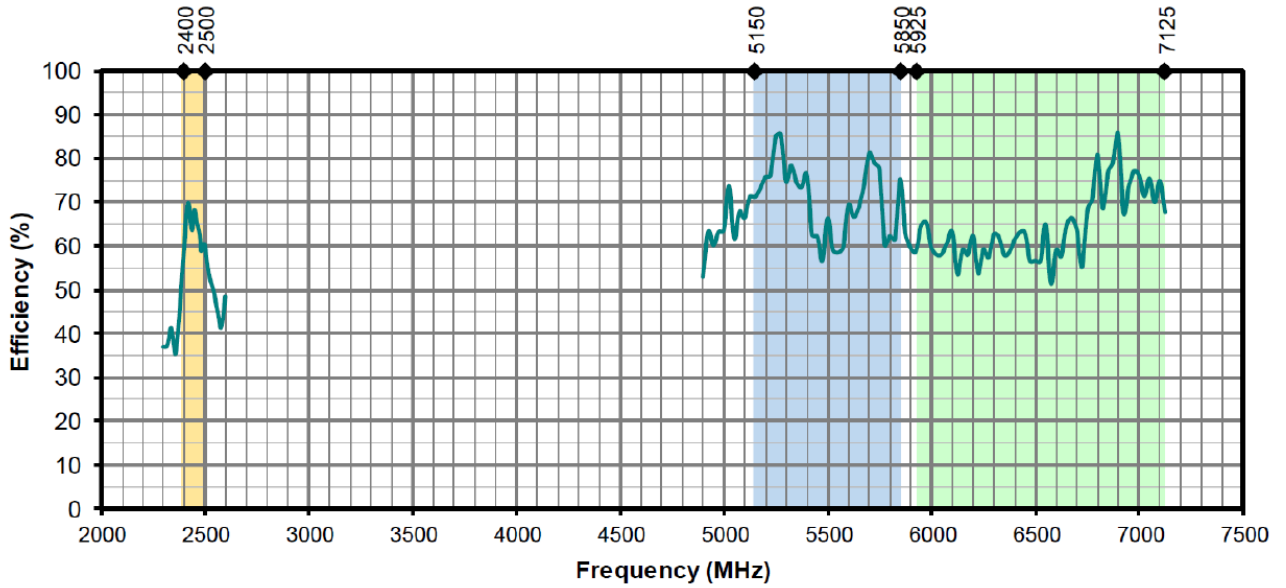


NANF30X10AMW2R45G3F

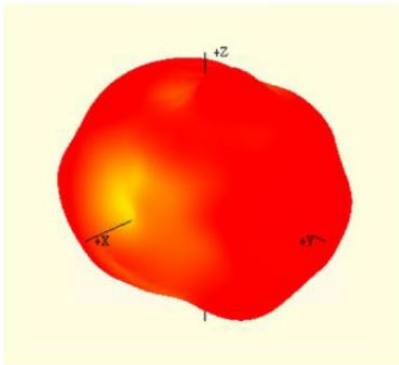
WIFI 6E / 7 External Whip Antenna



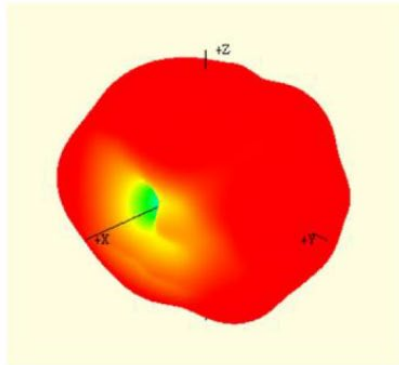
Efficiency



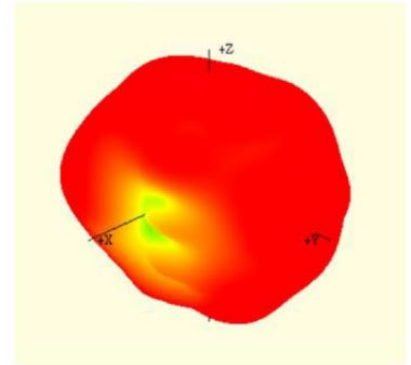
Radiation Patterns



2400 MHz



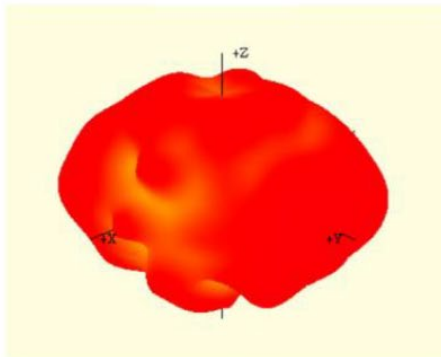
2450 MHz



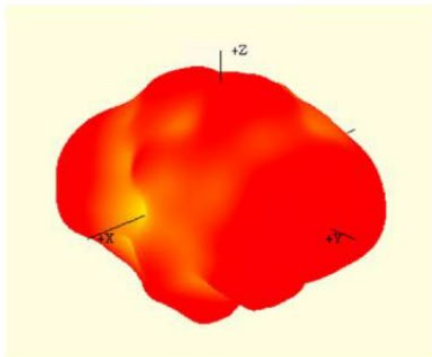
2500 MHz

NANF30X10AMW2R45G3F

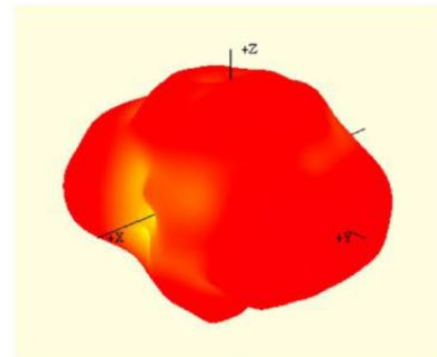
WIFI 6E / 7 External Whip Antenna



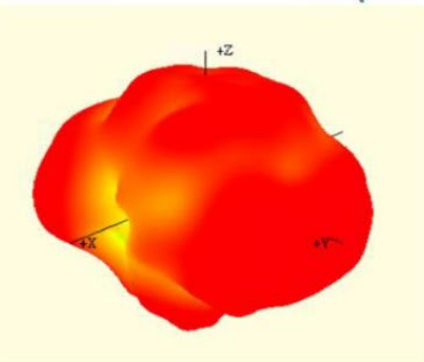
5150 MHz



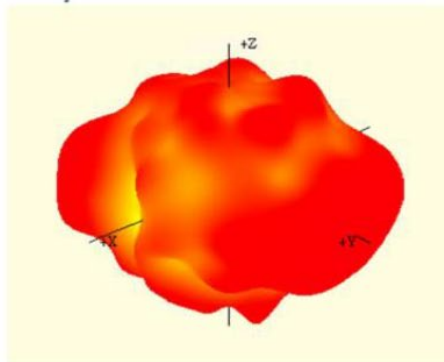
5550 MHz



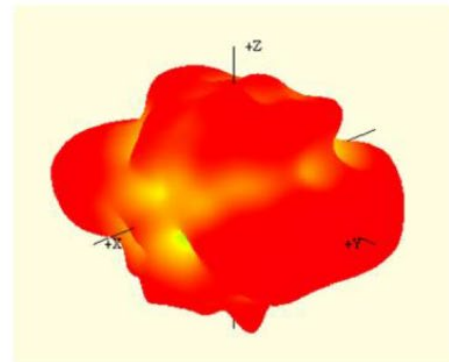
5850 MHz



5925 MHz



6525 MHz



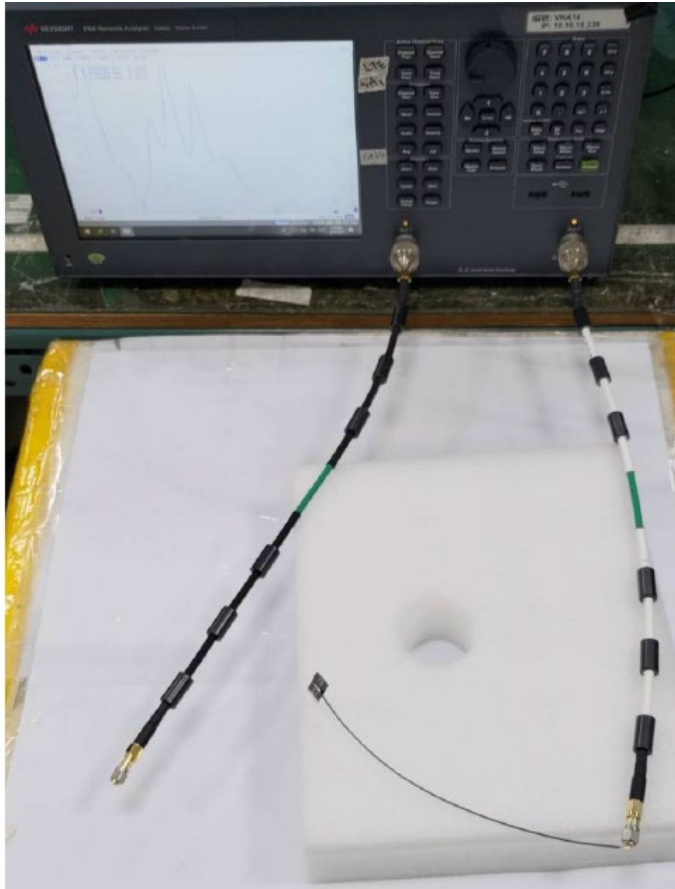
7125 MHz

NANF30X10AMW2R45G3F

WIFI 6E / 7 External Whip Antenna



Test Configuration with Plastic Ground



Frequency Range	2950 MHz	5925 ~7125 MHz
VSWR	≤ 2.1	≤ 2.3
Adapter	N to IPEX	
Test Distance	400 mm	
Testing Cable Type	Semi-rigid	
Location of Antenna	place in the middle of Styrofoam place	
Cable length	400 mm	

NANF30X10AMW2R45G3F

WIFI 6E / 7 External Whip Antenna



VSWR

