

NANE8X48WRJC0R820G2MF

698 / 1710 MHz LTE External Antenna



Description

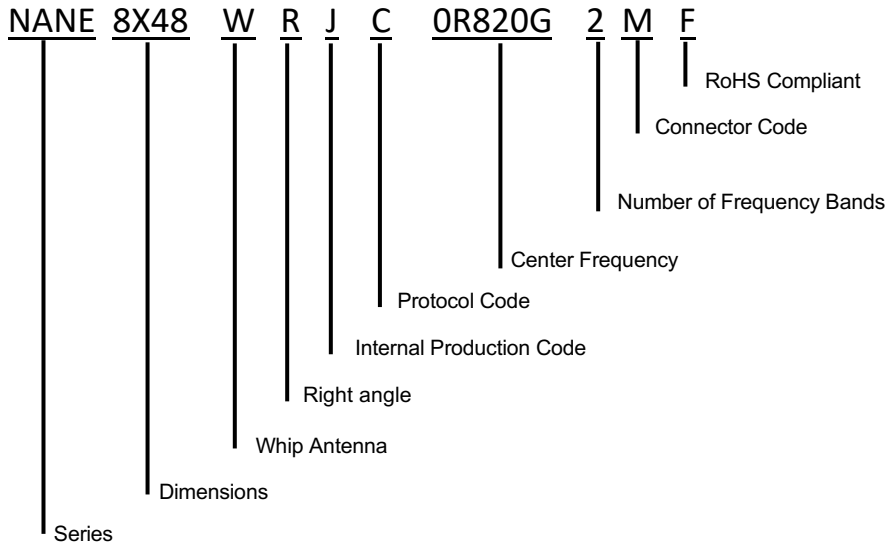
The NANE8X48WRJC0R820G2MF is an External Whip antenna designed for LTE applications. It operates within the frequency ranges of 824~894 MHz & 1710~2170 MHz making it perfect for Cellular communication.

Features

- LTE 698 & 1710 MHz Bands
- Right Angle
- RoHs Complaint



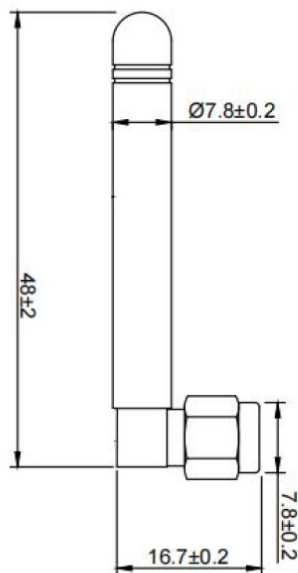
Part Number Breakdown



Specifications

Electrical	
Frequency Range	698 ~ 960MHz 1710 ~ 2700MHz
Gain	3 dBi
V.S.W.R	< 3.0
Polarization	Linear
Impedance	50Ω
Mounting Method	SMA Male
Environmental	
Operating Temperature -	-40°C~+65°C
Vibration	10 to 55Hz with 1.5mm amplitude 2hours
RoHs Compliant	Yes

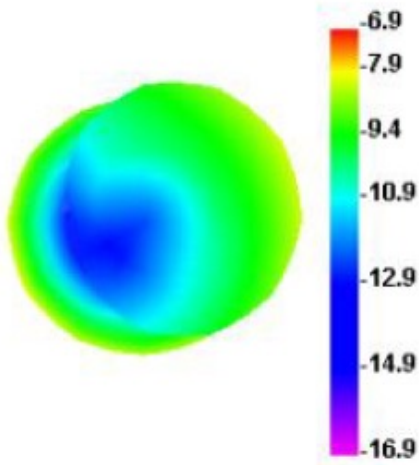
Dimension Drawing



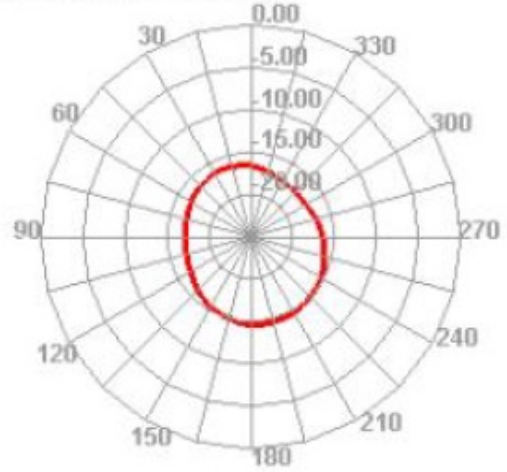
Unit: MM

Radiation Patterns

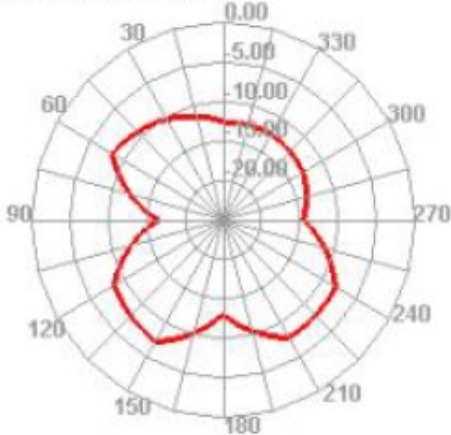
690.000MHz



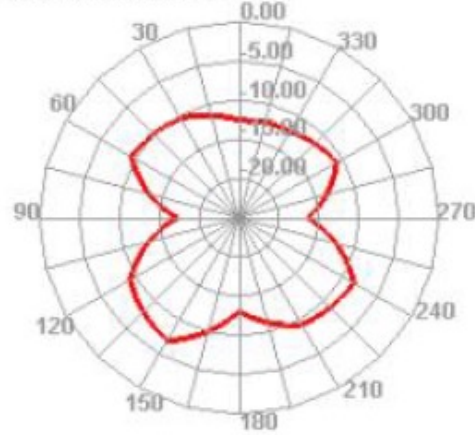
690.000MHz H



690.000MHz E1



690.000MHz E2

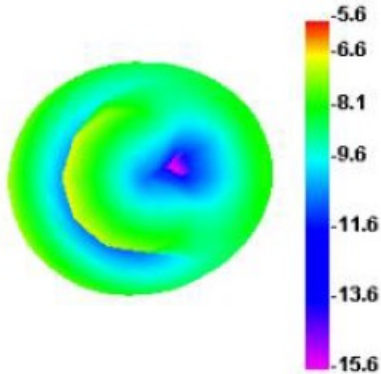


NANE8X48WRJC0R820G2MF

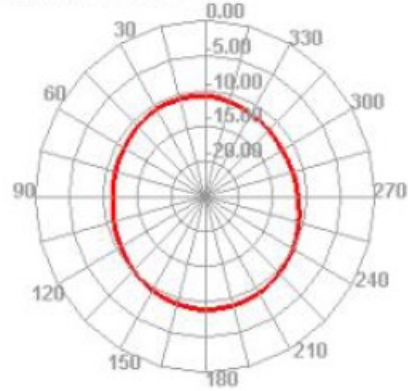
698 / 1710 MHz LTE External Antenna



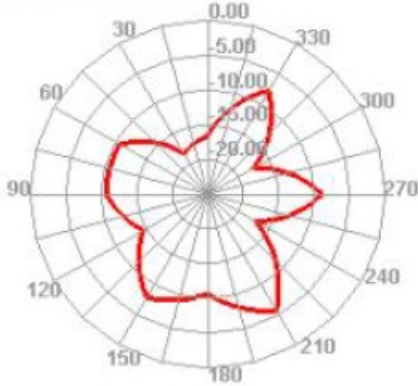
820.000MHz



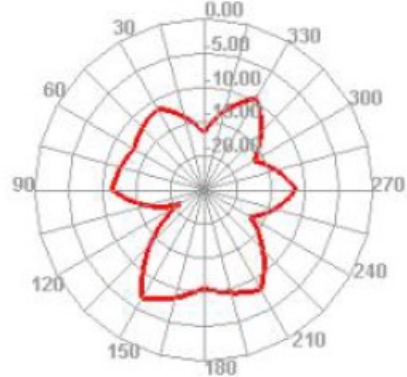
820.000MHz H



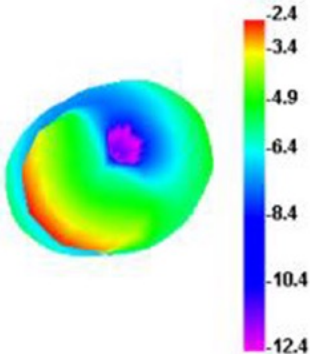
820.000MHz E1



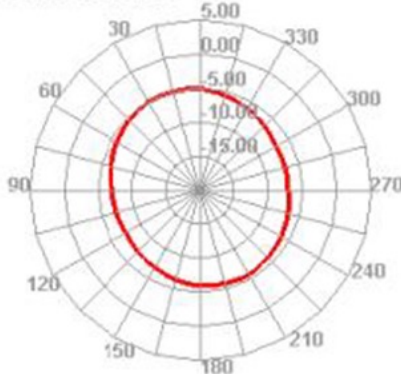
820.000MHz E2



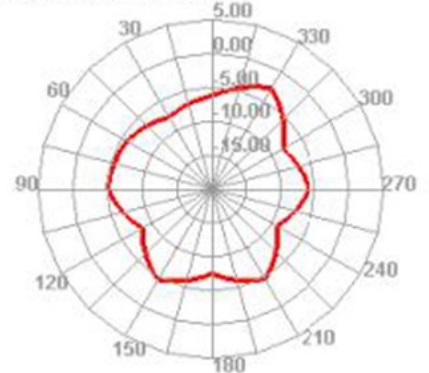
880.000MHz



880.000MHz H



880.000MHz E1

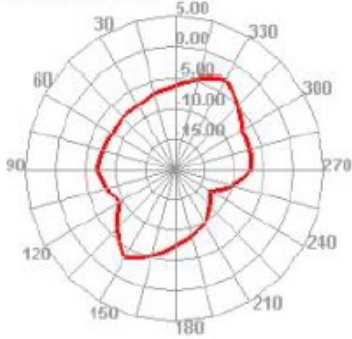


NANE8X48WRJC0R820G2MF

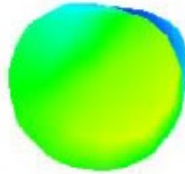
698 / 1710 MHz LTE External Antenna



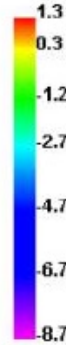
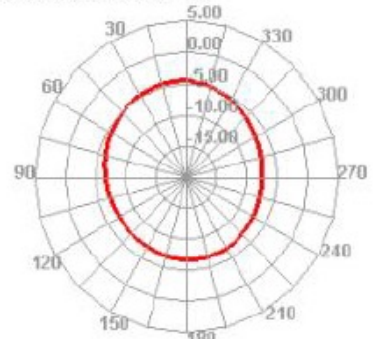
880.000MHz E2



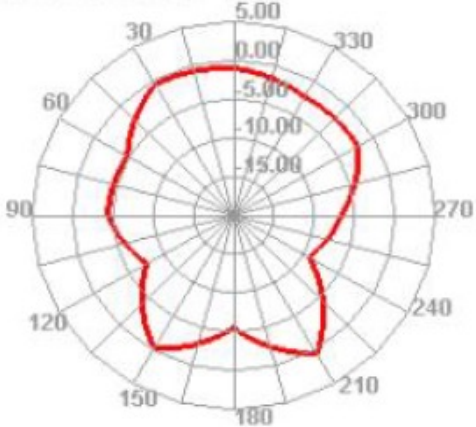
960.000MHz



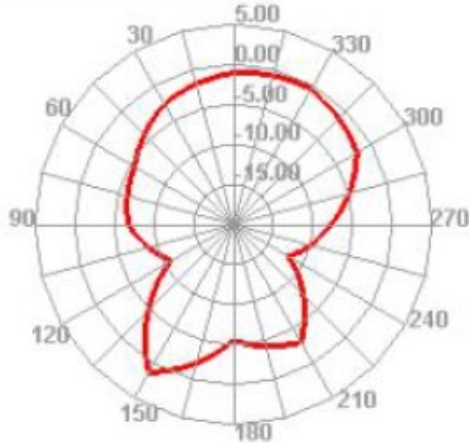
960.000MHz H



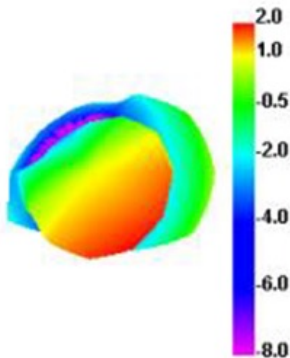
960.000MHz E1



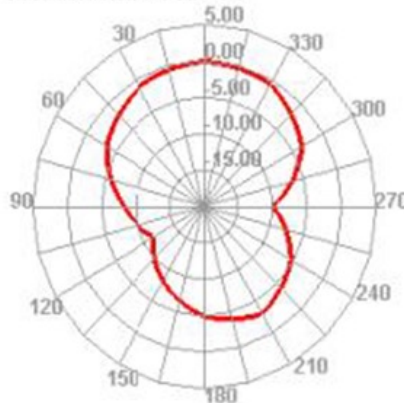
960.000MHz E2



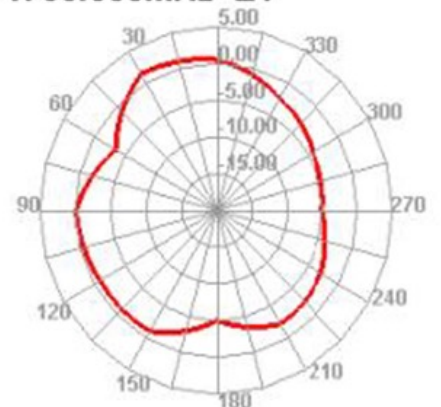
1700.000MHz



1700.000MHz H



1700.000MHz E1



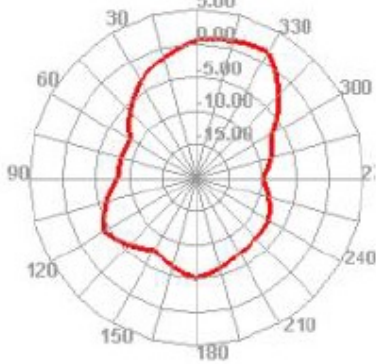
Performance Passives By Design

NANE8X48WRJC0R820G2MF

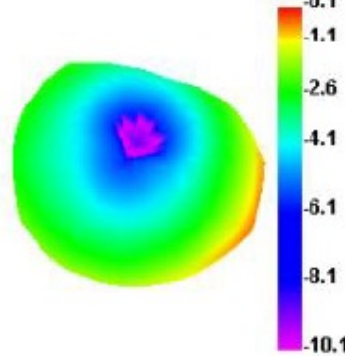
698 / 1710 MHz LTE External Antenna



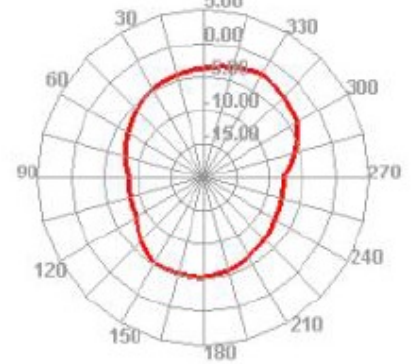
1700.000MHz E2



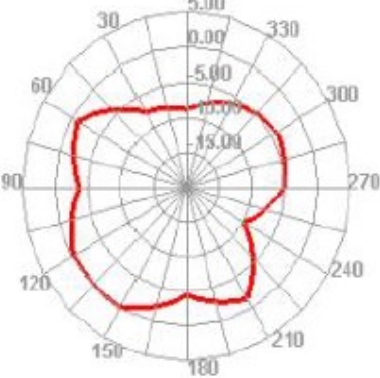
1850.000MHz



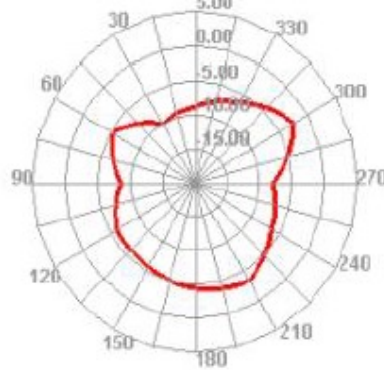
1850.000MHz H



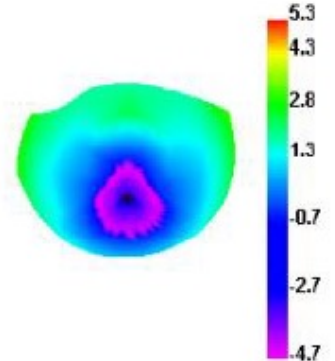
1850.000MHz E1



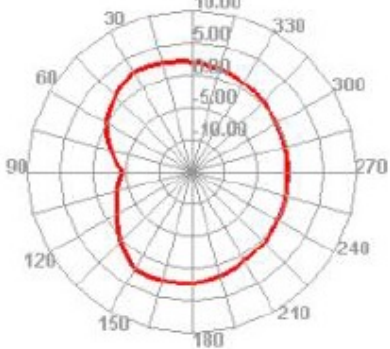
1850.000MHz E2



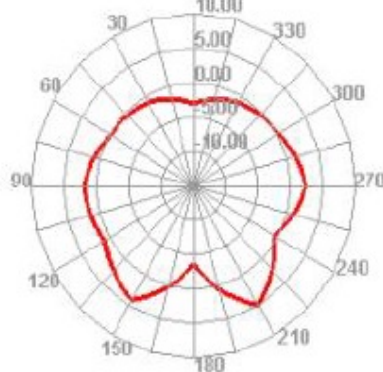
2700.000MHz



2700.000MHz H



2700.000MHz E1



2700.000MHz E2

