

NANE7x50WSJC0R820G2MF

698 / 1710 MHz LTE External Antenna



Features

- LTE 698 & 1710 MHz Bands
- Straight Angle
- RoHs Compliant

Applications

- Cellular Communication
- 4G LTE Coverage
- ISM BANDS



Specifications

Electrical	
Frequency Range	698~960MHz 1710~2700MHz
Gain	3 dBi
V.S.W.R	< 3.0
Polarization	Linear
Impedance	50Ω
Environmental	
Operating Temperature -	-40°C~+65°C
Vibration	10 to 55Hz with 1.5mm amplitude 2hours
RoHs Compliant	Yes

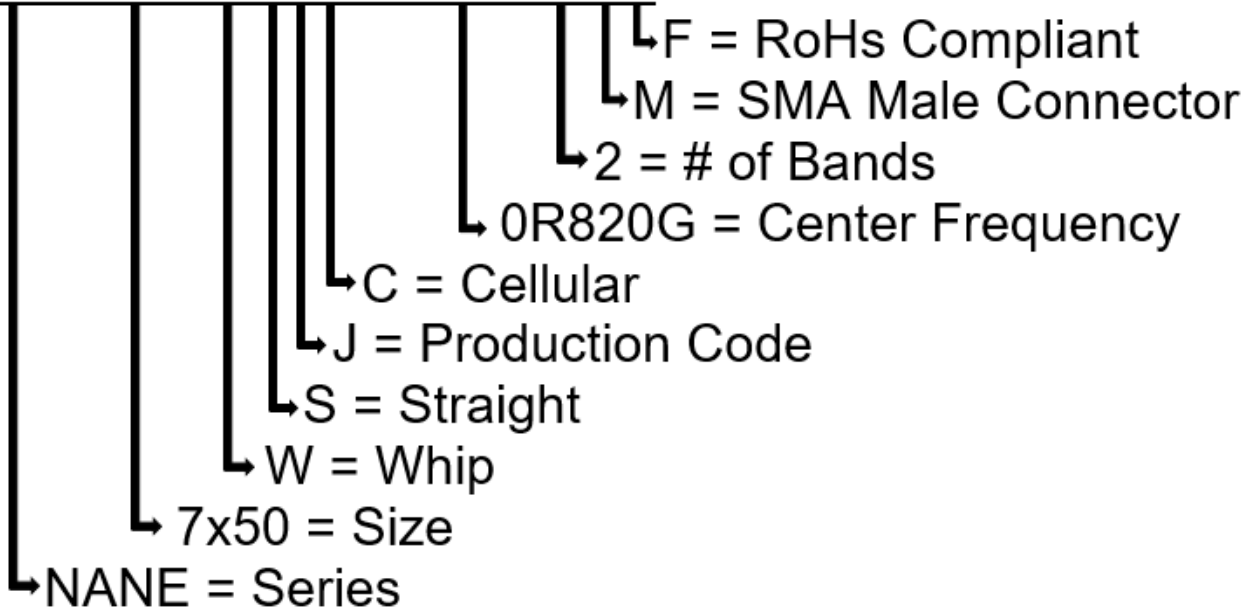
NANE7x50WSJC0R820G2MF

698 / 1710 MHz LTE External Antenna



Part Number Breakdown

NANE7x50WSJC0R820G2MF

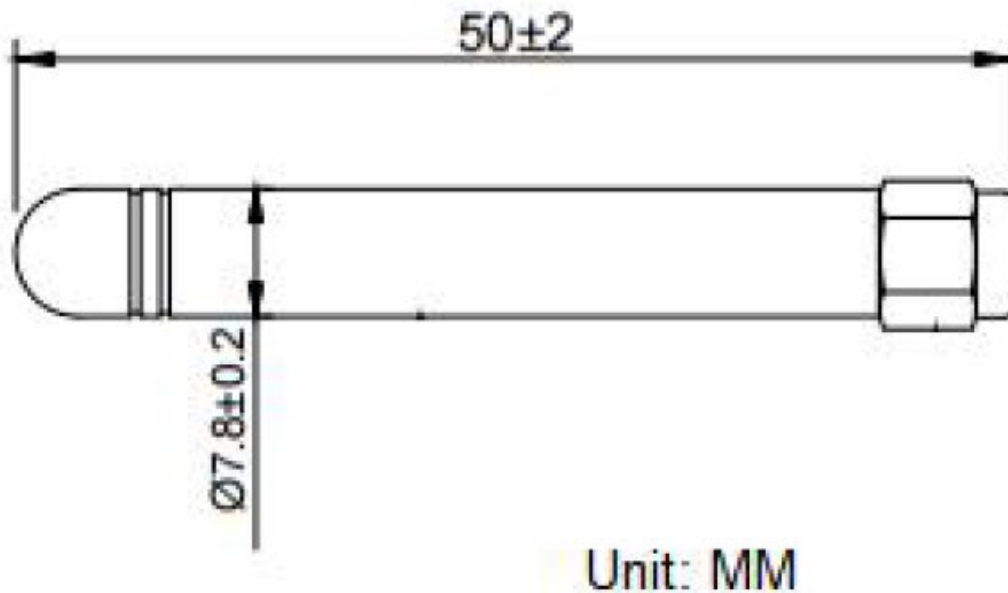


NANE7x50WSJC0R820G2MF

698 / 1710 MHz LTE External Antenna



Dimension Drawing

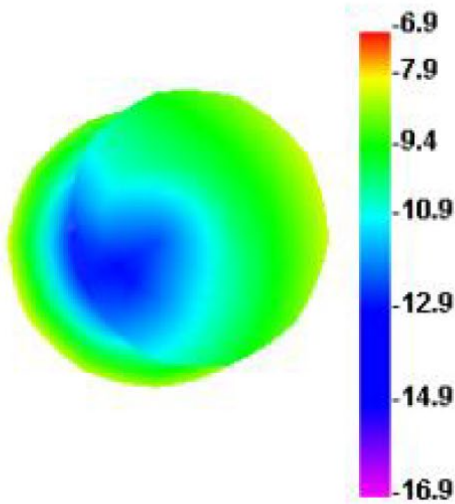


Dimensions (mm) & Mechanical

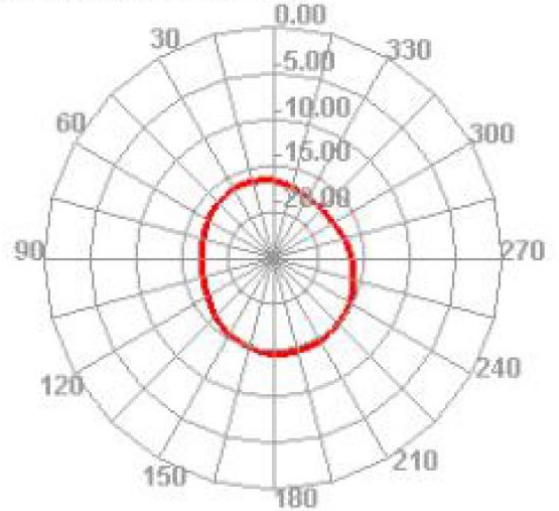
Body Length	50 ± 2.0
Diameter	7.8 ± 0.2
Connection Type	SMA Male

Radiation Patterns

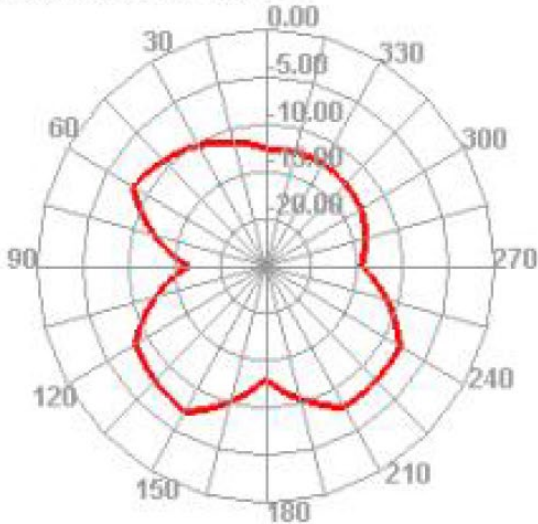
690.000MHz



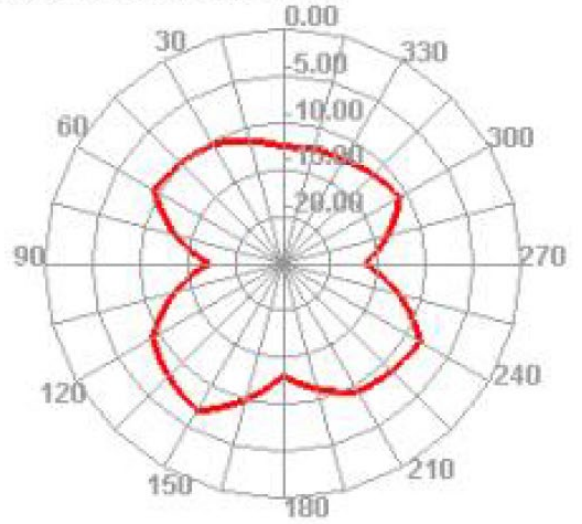
690.000MHz H



690.000MHz E1



690.000MHz E2

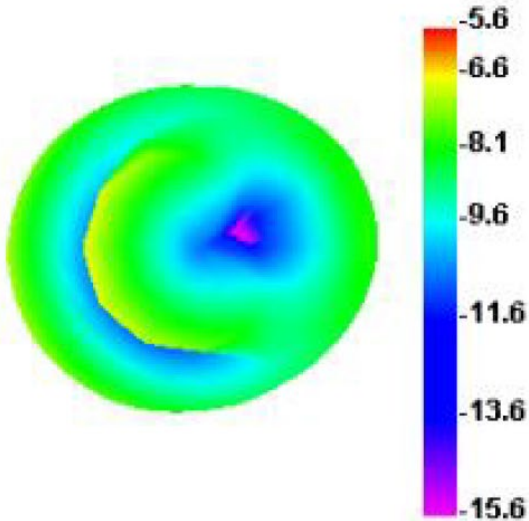


NANE7x50WSJC0R820G2MF

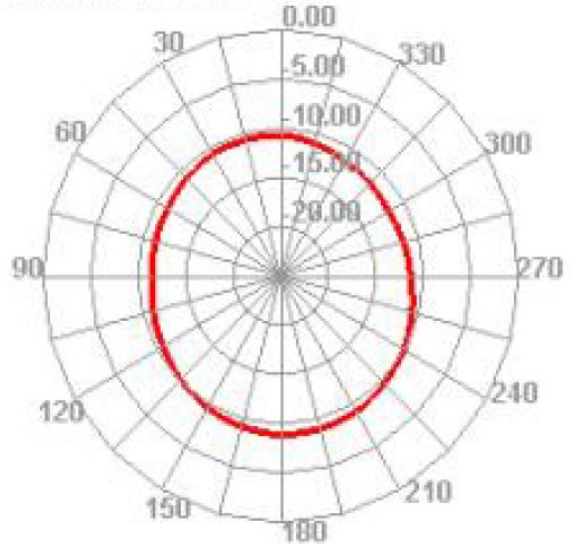
698 / 1710 MHz LTE External Antenna



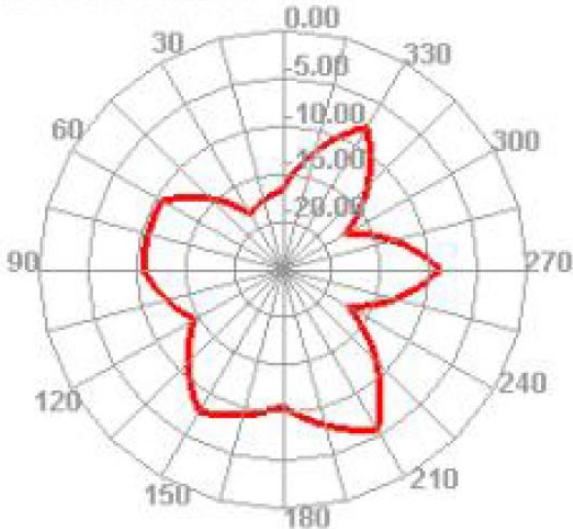
820.000MHz



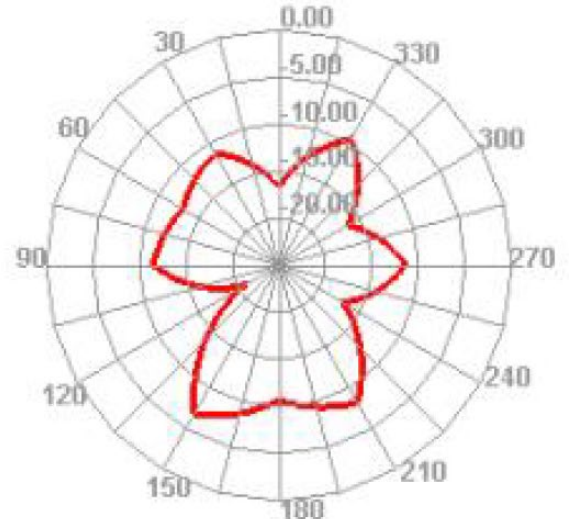
820.000MHz H



820.000MHz E1



820.000MHz E2

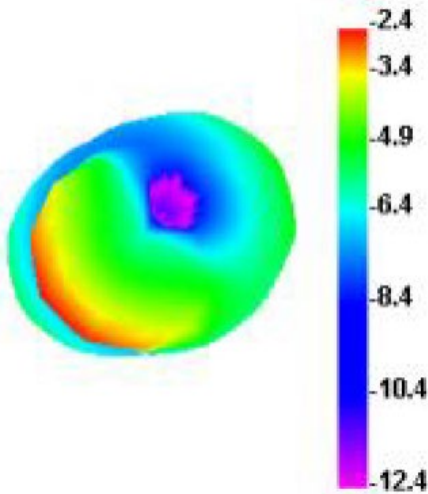


NANE7x50WSJC0R820G2MF

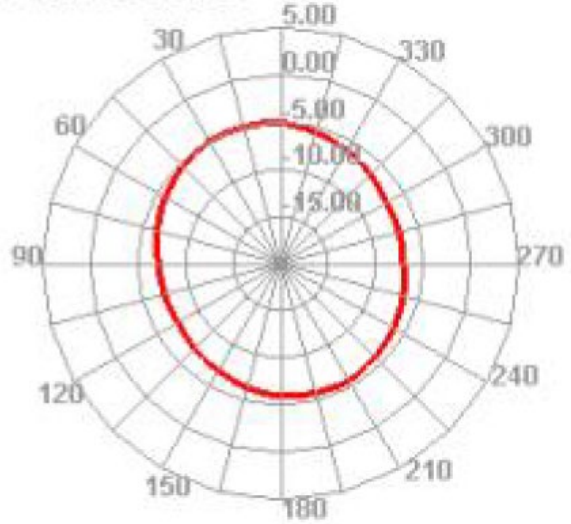
698 / 1710 MHz LTE External Antenna



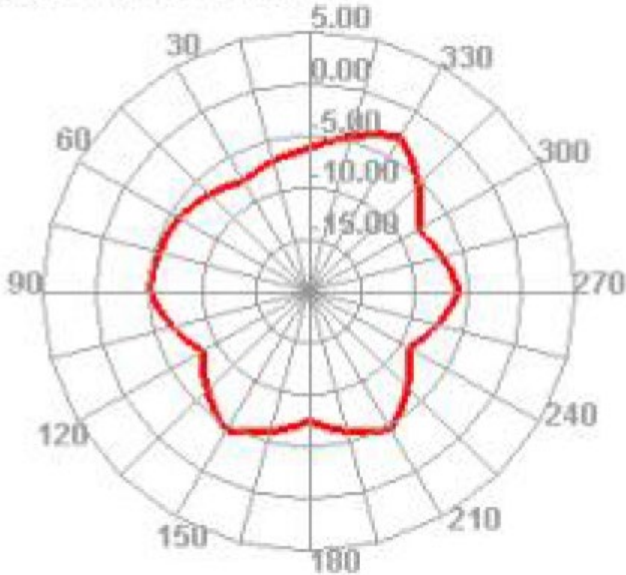
880.000MHz



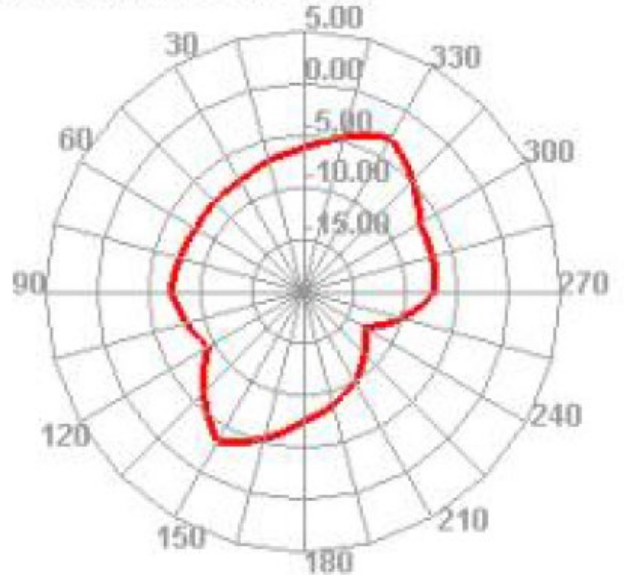
880.000MHz H



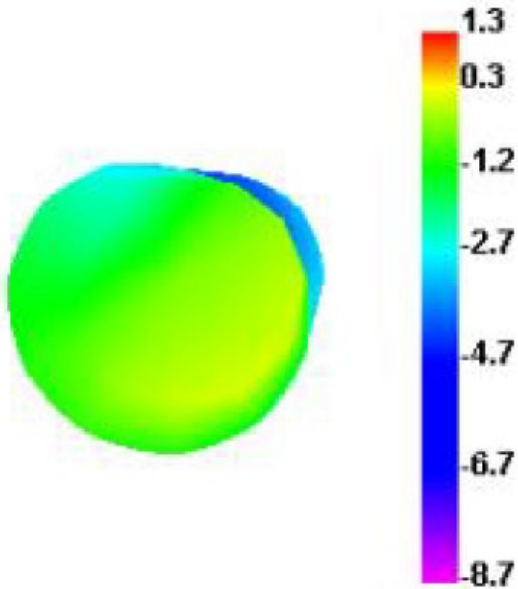
880.000MHz E1



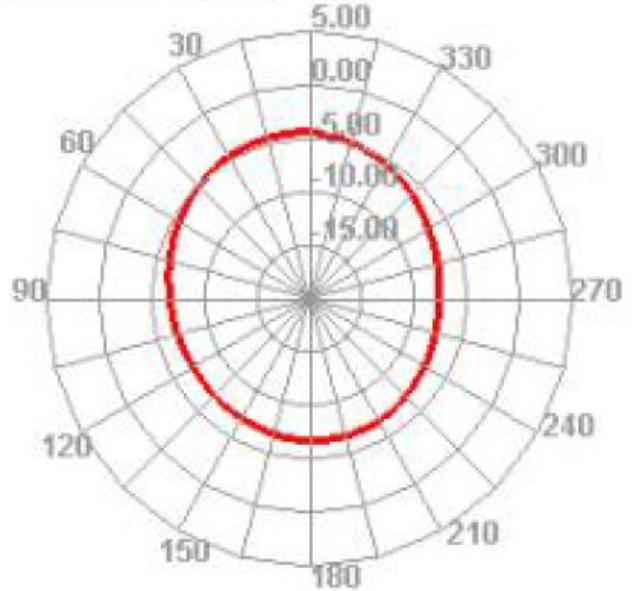
880.000MHz E2



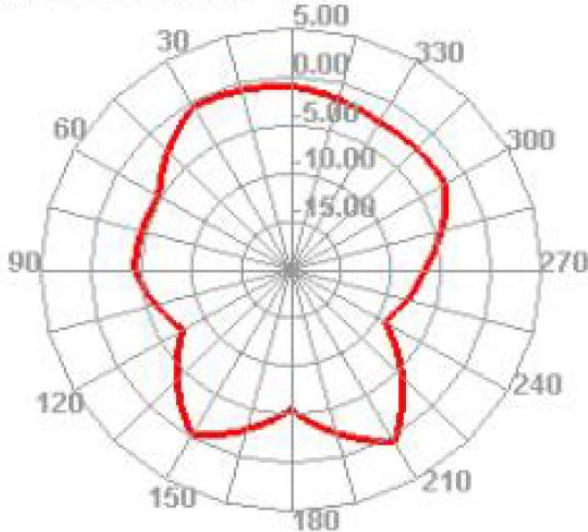
960.000MHz



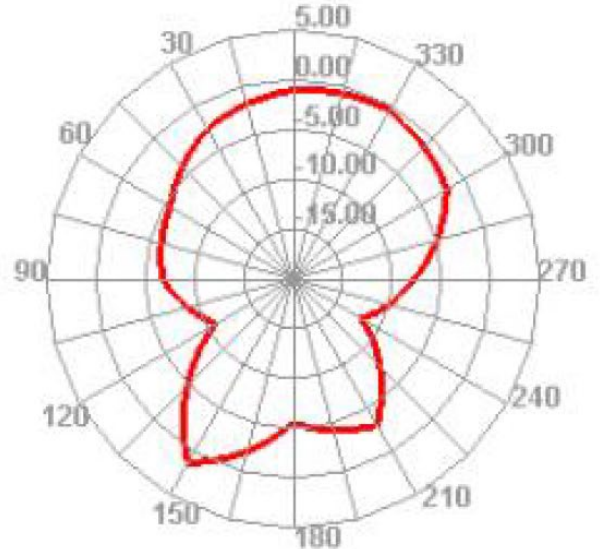
960.000MHz H



960.000MHz E1



960.000MHz E2

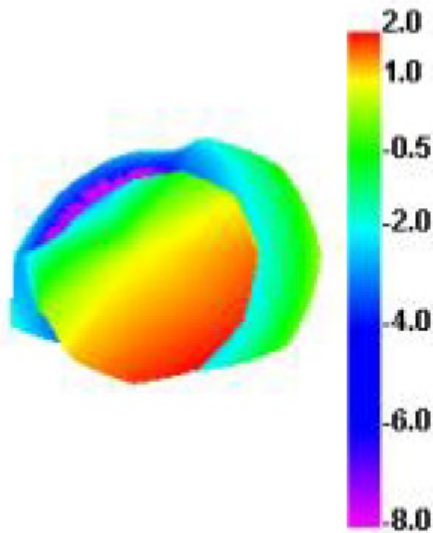


NANE7x50WSJC0R820G2MF

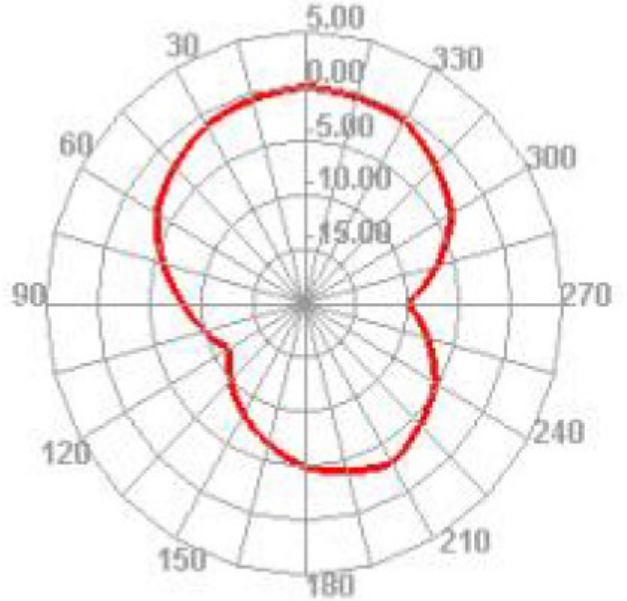
698 / 1710 MHz LTE External Antenna



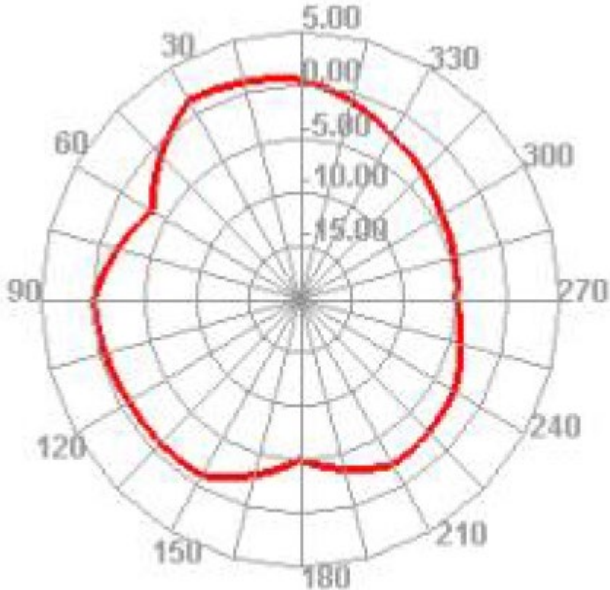
1700.000MHz



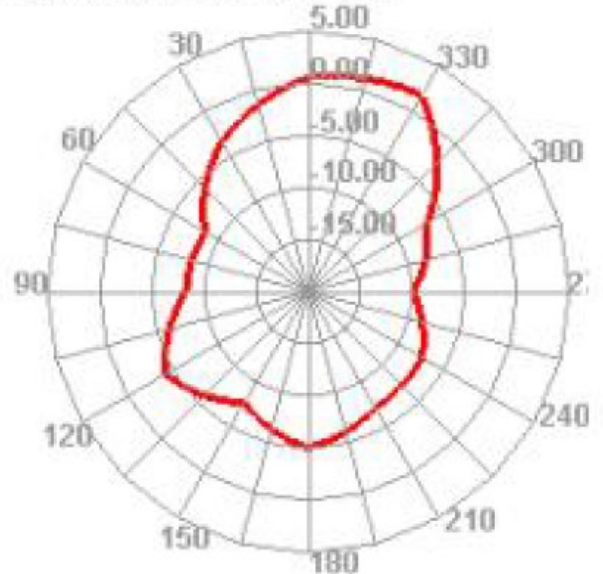
1700.000MHz H



1700.000MHz E1



1700.000MHz E2

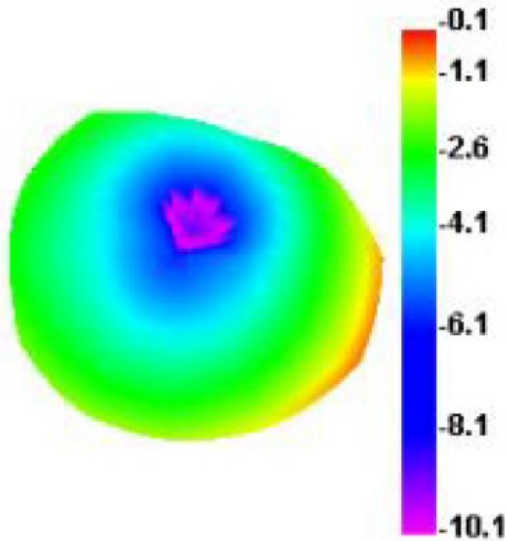


NANE7x50WSJC0R820G2MF

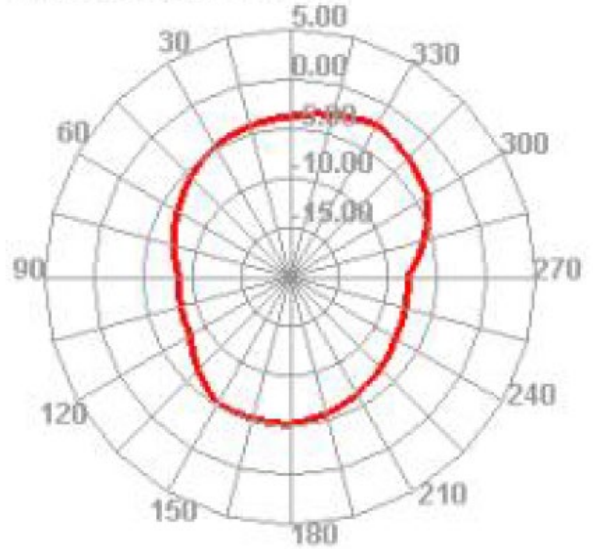
698 / 1710 MHz LTE External Antenna



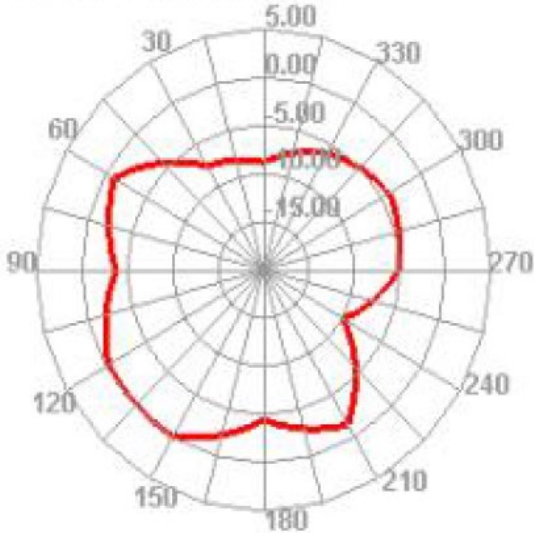
1850.000MHz



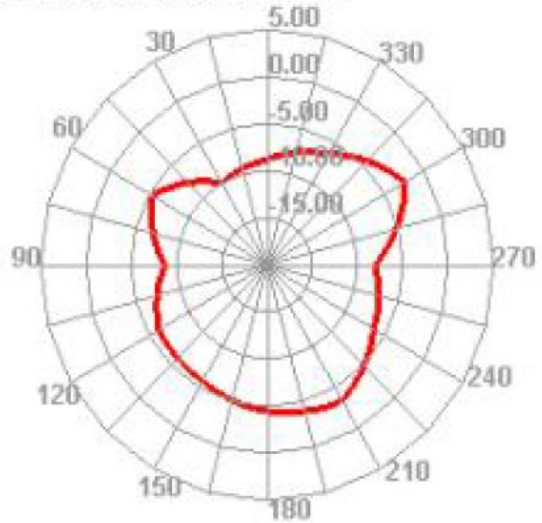
1850.000MHz H



1850.000MHz E1



1850.000MHz E2

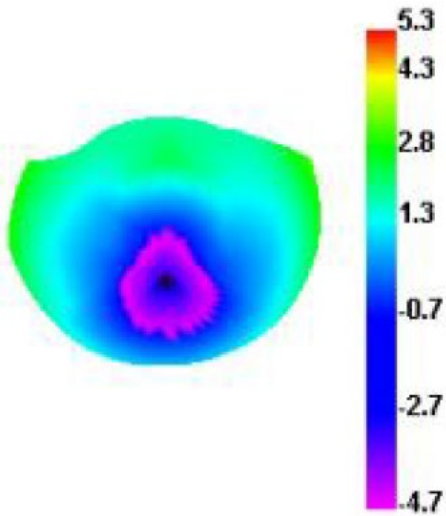


NANE7x50WSJC0R820G2MF

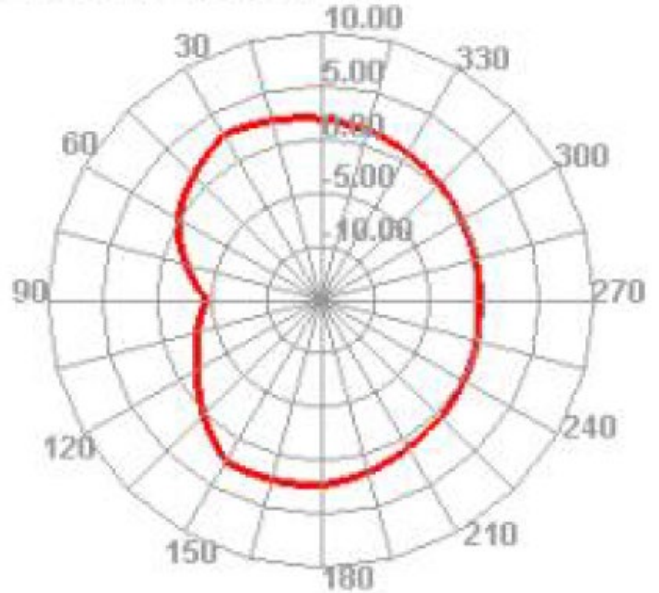
698 / 1710 MHz LTE External Antenna



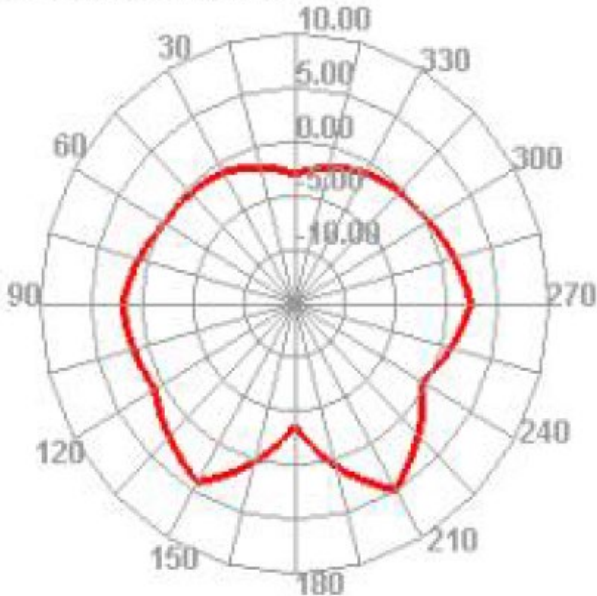
2700.000MHz



2700.000MHz H



2700.000MHz E1



2700.000MHz E2

