

NANE20X806FSJC0R824G2NF

700 MHz & 1710 MHz LTE Fliberglass Antenna



Description

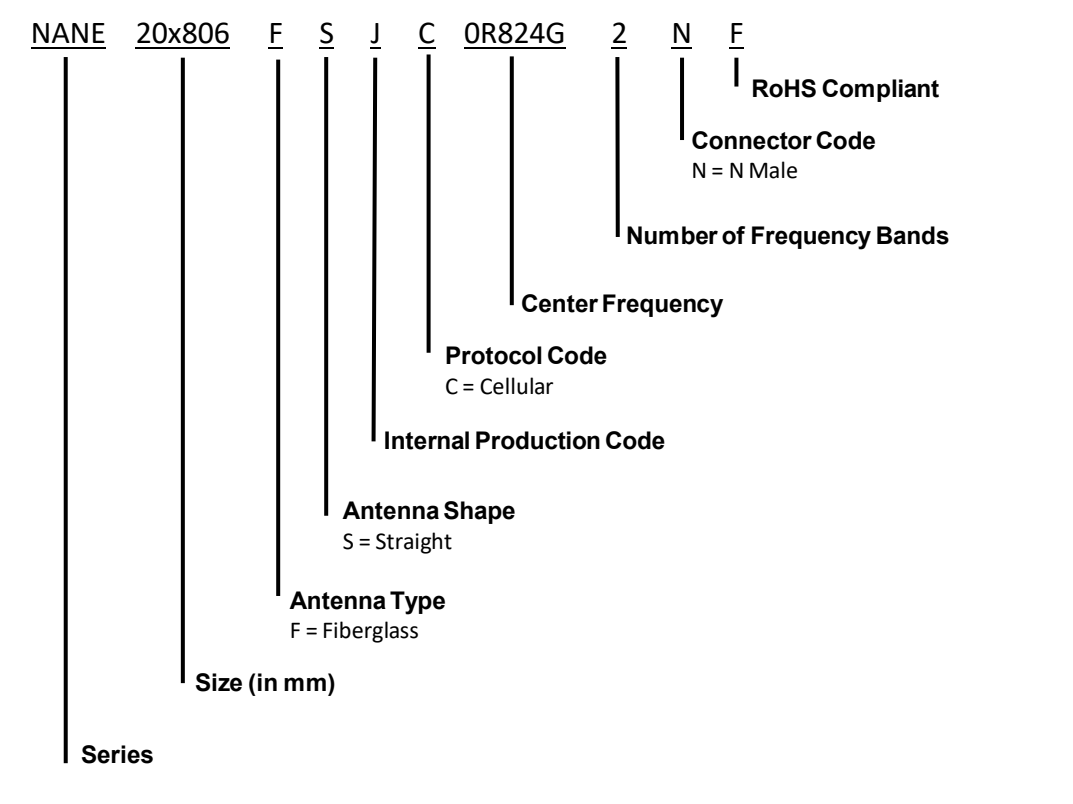
The NANE20X806FSJC0R824G2NF is an External Fiberglass antenna designed for LTE applications. It operates within the frequency ranges of 700 - 960 MHz and 1710 – 2700 MHz making it perfect for Hotspots, LoRaWAN, and Cellular Communication



Features

- 700 MHz & 1710 MHz LTE Protocol
- Waterproof
- RoHS Complaint

Part Number Breakdown



Standard Part Numbers Listings

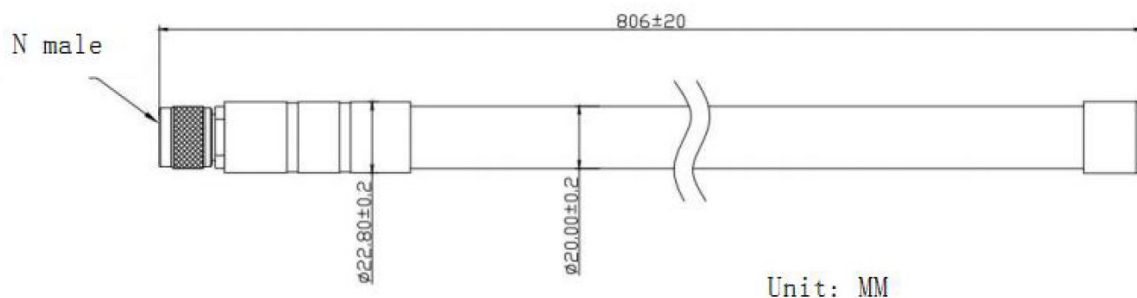
Part Number	Protocol	Connector
NANE20X806FSJC0R824G2NF	LTE	N Male

The table represents assembled part numbers available on www.niccomp.com. For options not listed above please contact NIC

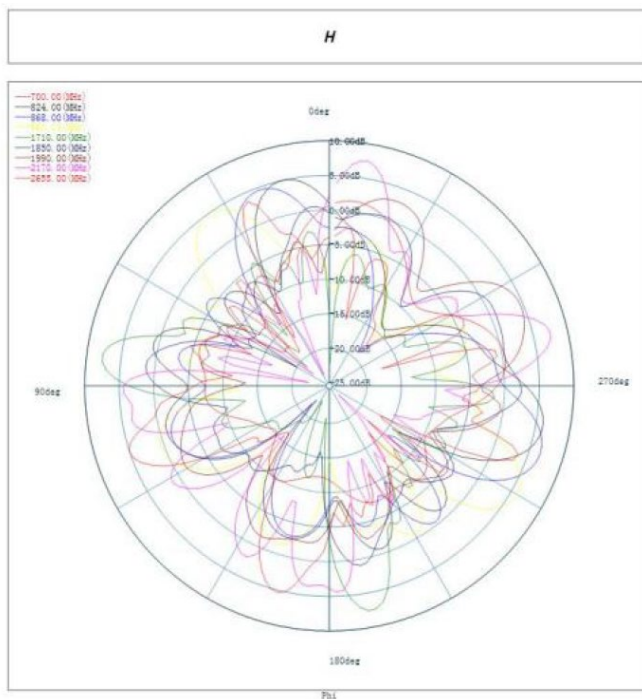
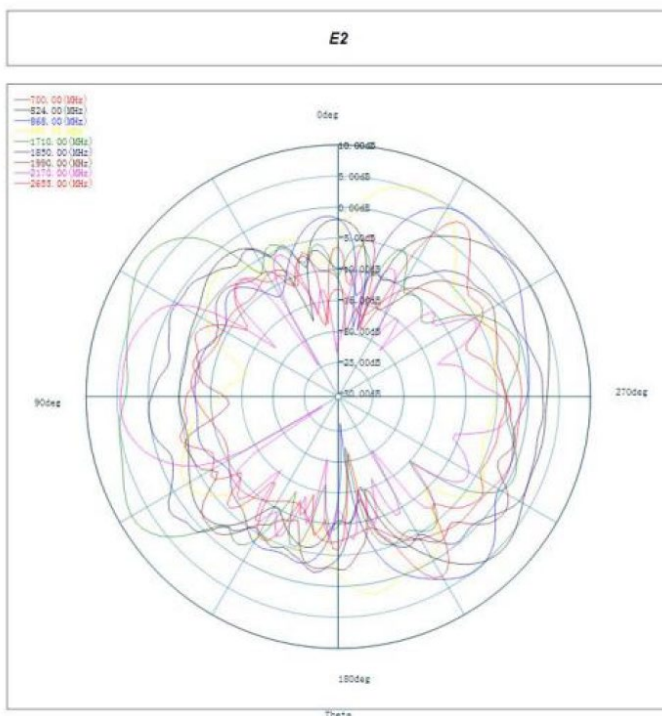
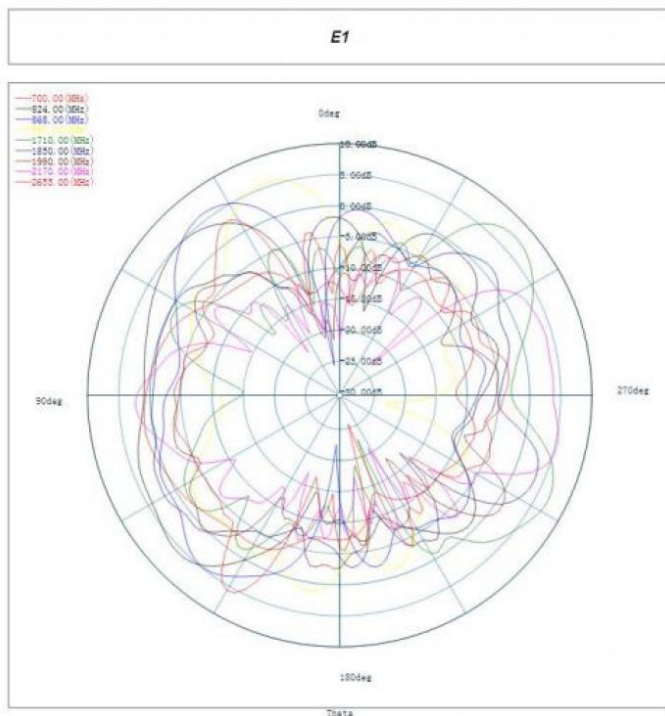
Specifications

Electrical	
Frequency Range	700 ~960 MHz 1710 ~ 2700 MHz
Gain	5 dBi
VSWR	< 2.2
Maximum input power	100 W
Polarization	Vertical
Impedance	50 Ω
Environmental & Mechanical	
Operating Temperature	-40°C~+85°C
Rated Wind Velocity	60 m/s
Lightning Protection	DC Ground
Antenna Material	Compound Glass Fiber
Radome Color	Grey
Mounting Method	Pole- holding
Mounting Hardware	Φ 35- Φ 50 mm
ROHS Compliant	Yes

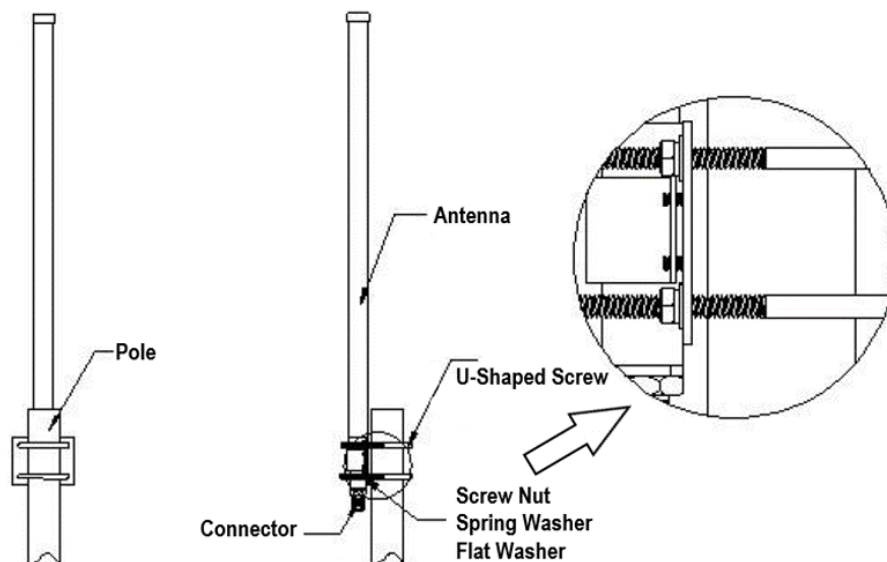
Dimensions



Radiation Patterns



Installation Instructions



Installation Steps:

1. Place the M6 U-shape screw through the holes on the clamps to mount the antenna to the pole, whose outer diameter is 35~50mm. Then put on the flat washer and the spring washer and twist all the nuts.
2. There should be at least three meters between the ground or floor and the antenna above. Do not place near any huge buildings, metal objects or any other obstacles or shelters
3. Adjust the mounting height of the antenna to the proper position to receive the best signal and then seal all the connectors
4. Please pay attention to lightning protection