

# NANE16X50WRJW2R45G2RF

## 2.4 & 5.1 GHz WIFI External Antenna



### Description

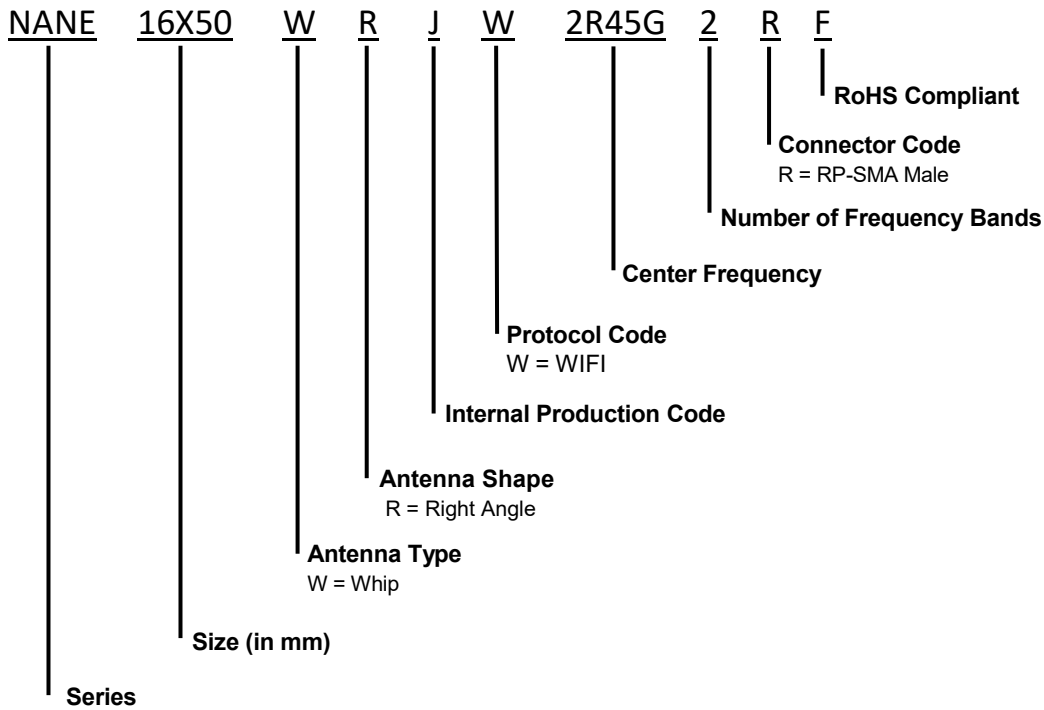
NANE16X50WRJW2R45G2RF is an External Whip antenna designed for WIFI applications. It operates within the frequency ranges of 2400 ~ 2500MHz and 5150 ~ 5850MHz making it perfect for Gateways, Meters and Routers

### Features

- 2.4 & 5.1 GHz WIFI Protocol
- 90° Angle
- RoHS Compliant



### Part Number Breakdown



### Part Numbers Options

Part Number	Protocol	Connector
NANE16X50WRJW2R45G2RF	WIFI	RP-SMA Male

The table represents assembled part numbers available on [www.niccomp.com](http://www.niccomp.com). For options not listed above please contact NIC

# NANE16X50WRJW2R45G2RF

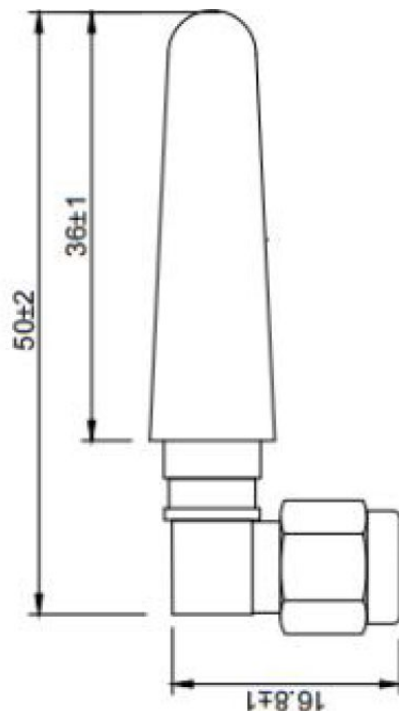
## 2.4 & 5.1 GHz WIFI External Antenna



### Specifications

Electrical	
Frequency Range	2400 ~ 2500 MHz 5150 ~ 5850 MHz
Gain	2 dBi
V.S.W.R	< 3.0
Polarization	Linear
Impedance	50Ω
Environmental	
Operating Temperature -	-20°C~+65°C
Vibration	10 to 55Hz with 1.5mm amplitude 2hours
RoHs Compliant	Yes

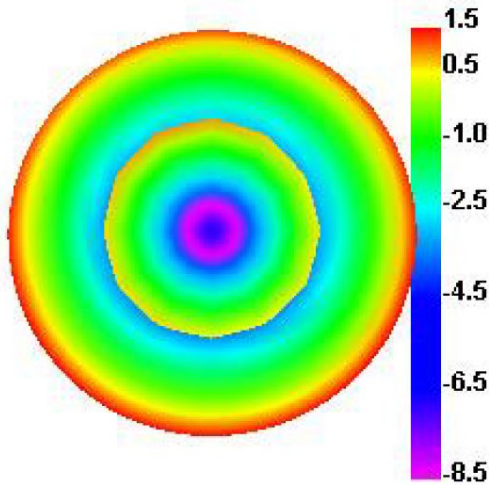
### Dimension Drawing



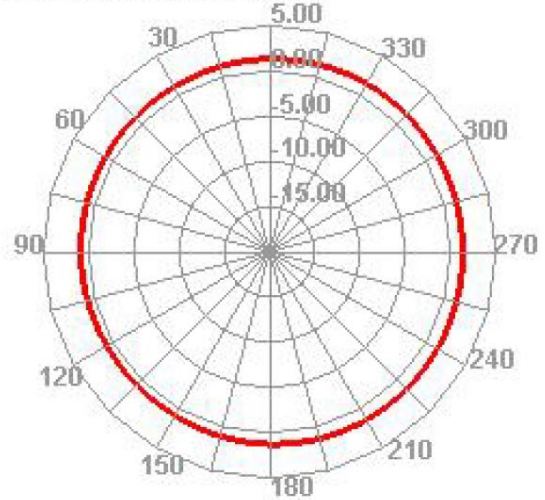
Unit: MM

### Radiation Patterns

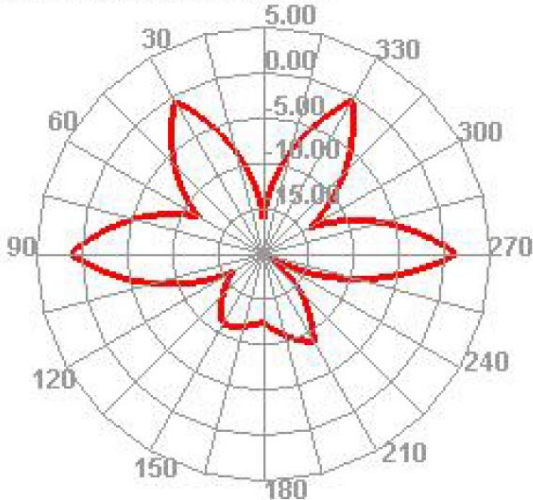
#### 2400.000MHz



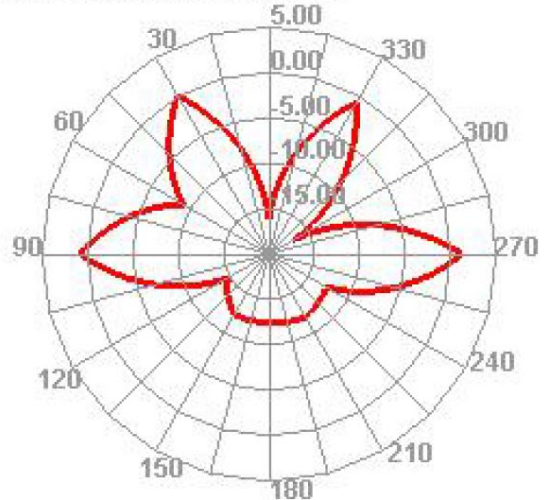
#### 2400.000MHz H



#### 2400.000MHz E1



#### 2400.000MHz E2

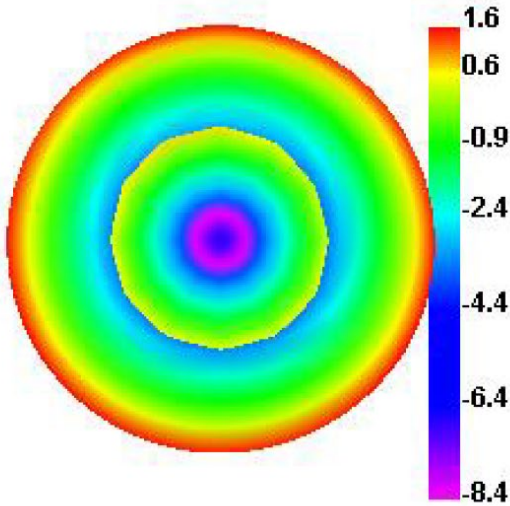


# NANE16X50WRJW2R45G2RF

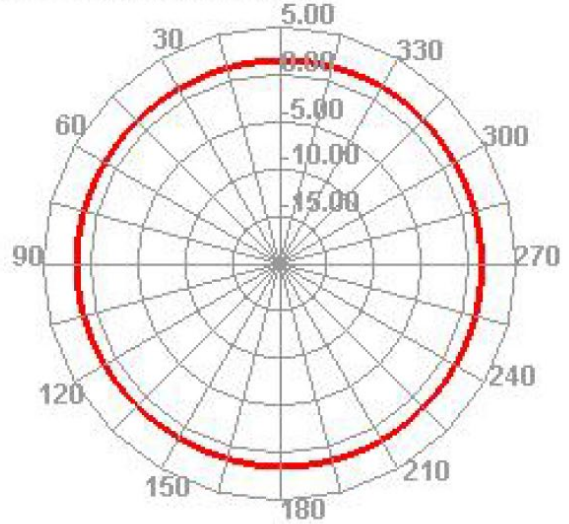
2.4 & 5.1 GHz WIFI External Antenna



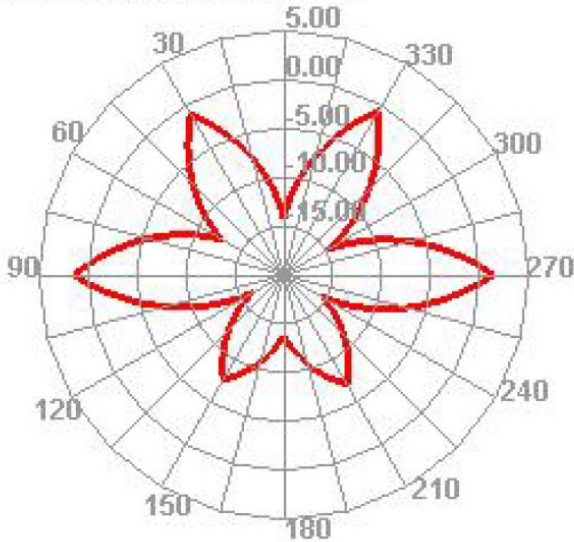
### 2450.000MHz



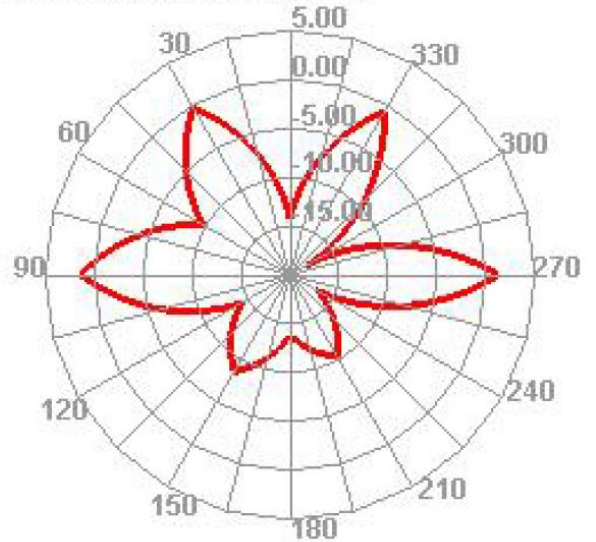
### 2450.000MHz H



### 2450.000MHz E1



### 2450.000MHz E2

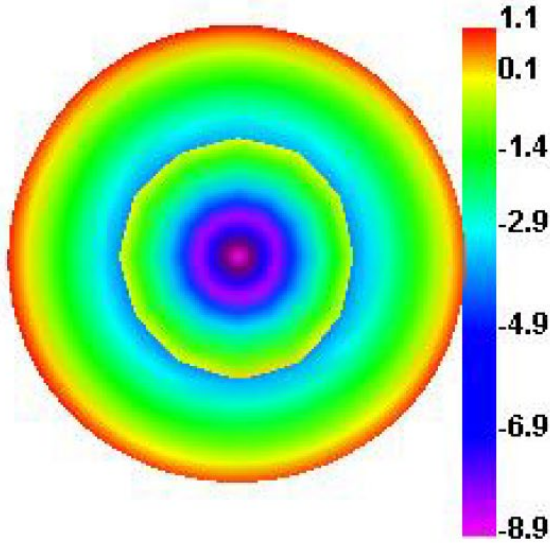


# NANE16X50WRJW2R45G2RF

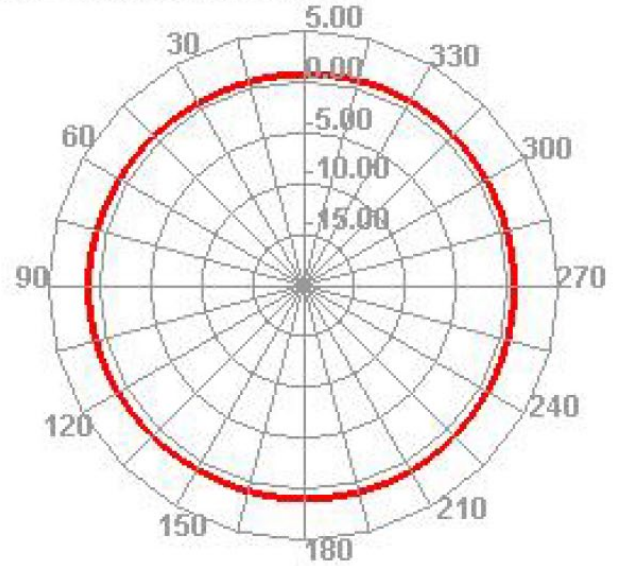
2.4 & 5.1 GHz WIFI External Antenna



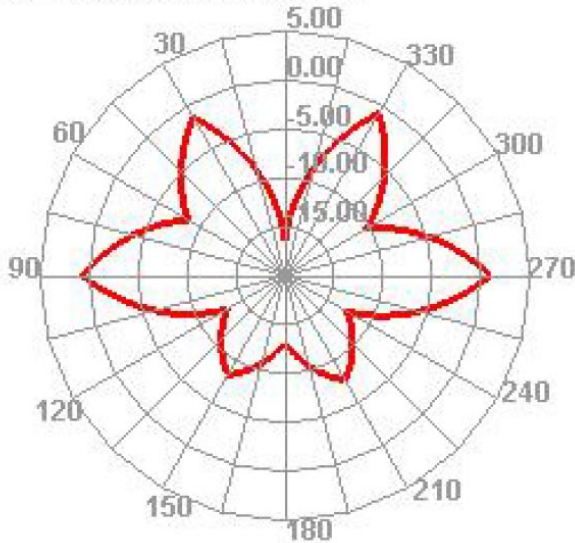
## 2500.000MHz



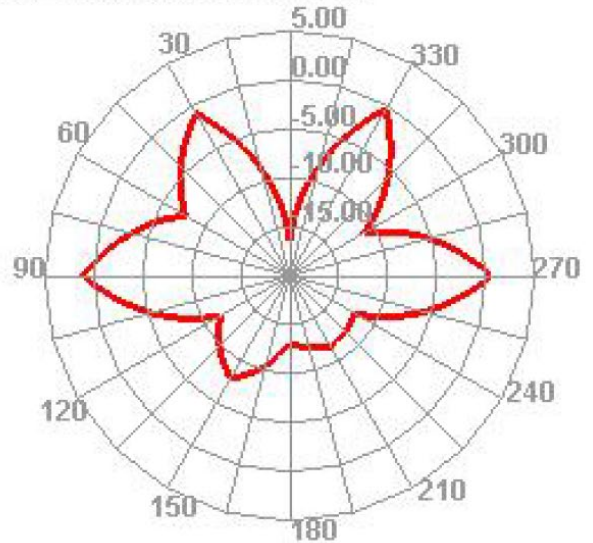
## 2500.000MHz H



## 2500.000MHz E1



## 2500.000MHz E2

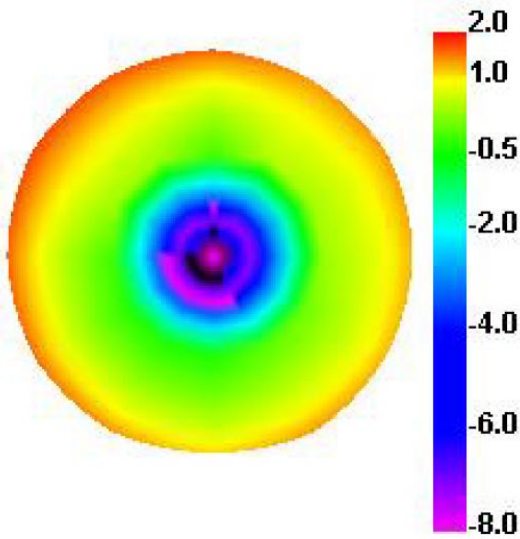


# NANE16X50WRJW2R45G2RF

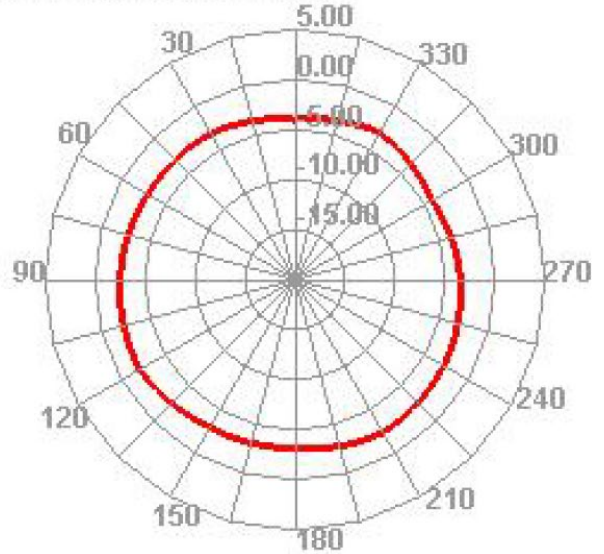
2.4 & 5.1 GHz WIFI External Antenna



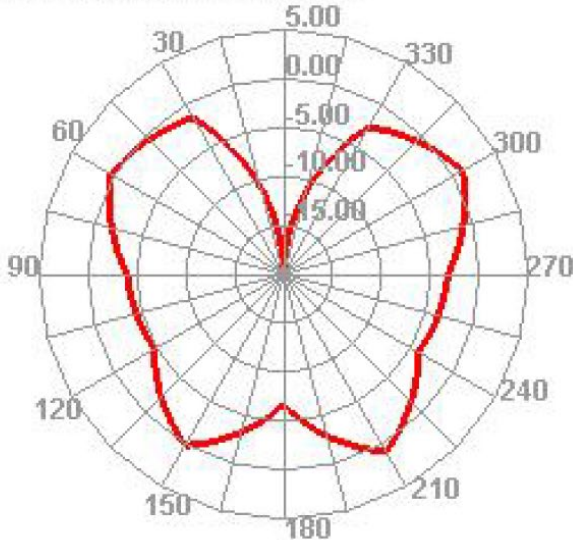
## 5150.000MHz



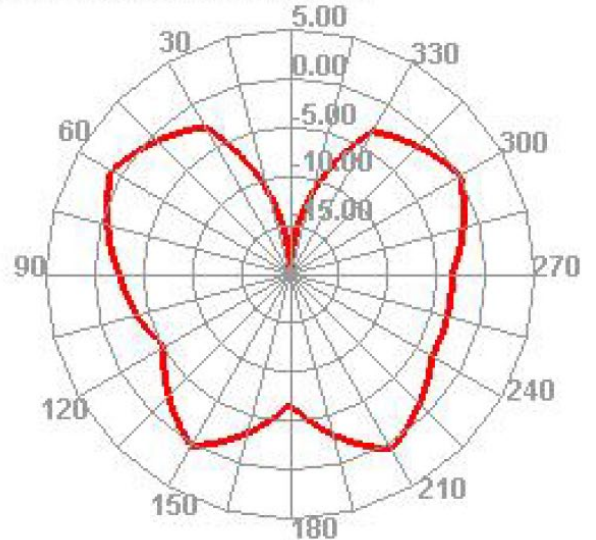
## 5150.000MHz H



## 5150.000MHz E1



## 5150.000MHz E2

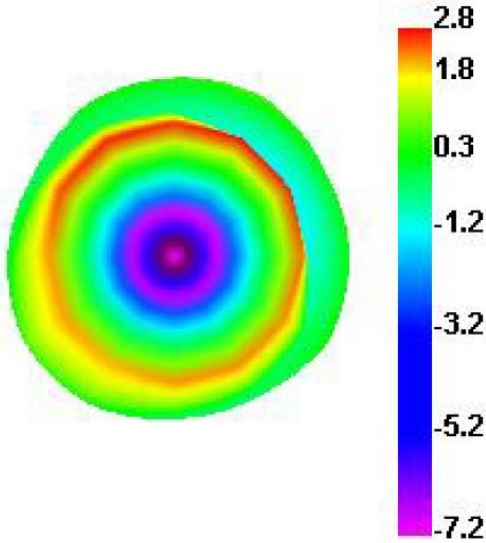


# NANE16X50WRJW2R45G2RF

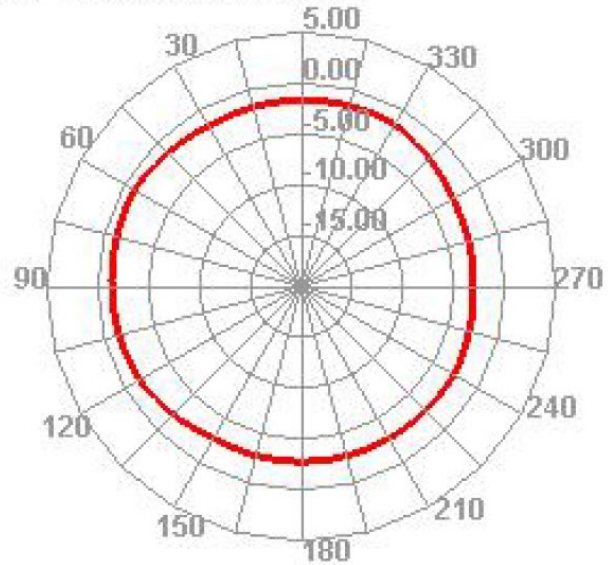
2.4 & 5.1 GHz WIFI External Antenna



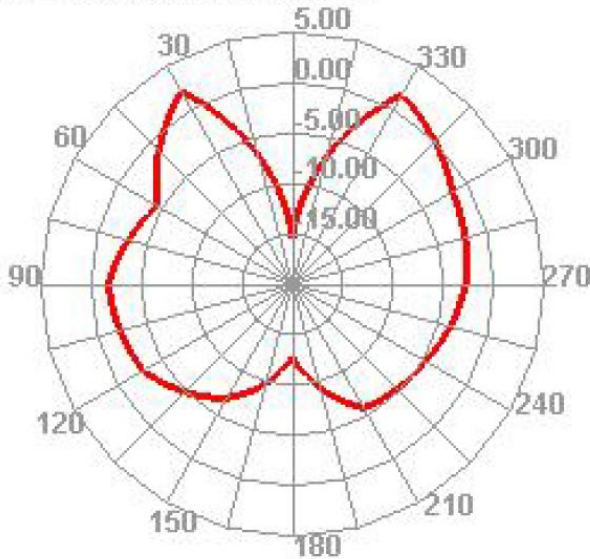
## 5500.000MHz



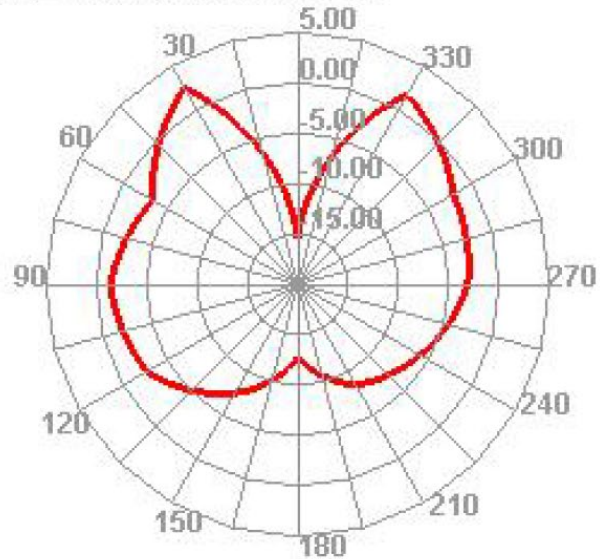
## 5500.000MHz H



## 5500.000MHz E1



## 5500.000MHz E2

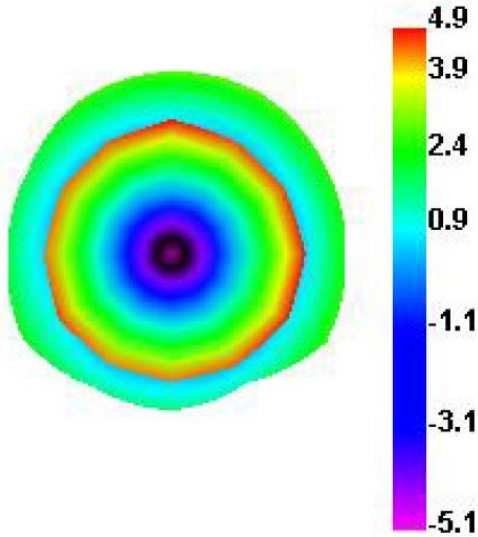


# NANE16X50WRJW2R45G2RF

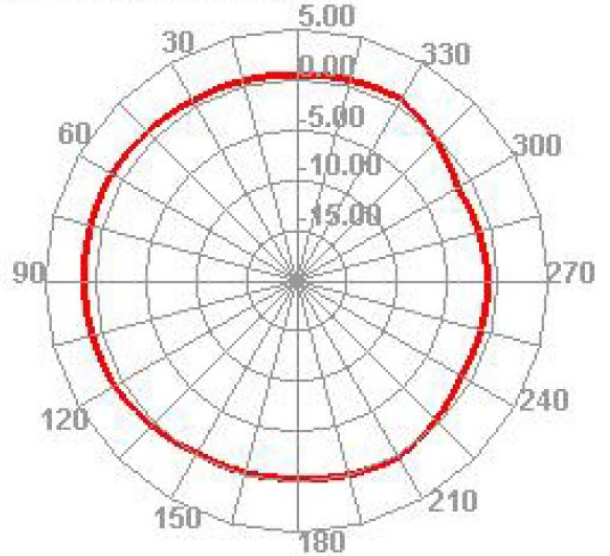
2.4 & 5.1 GHz WIFI External Antenna



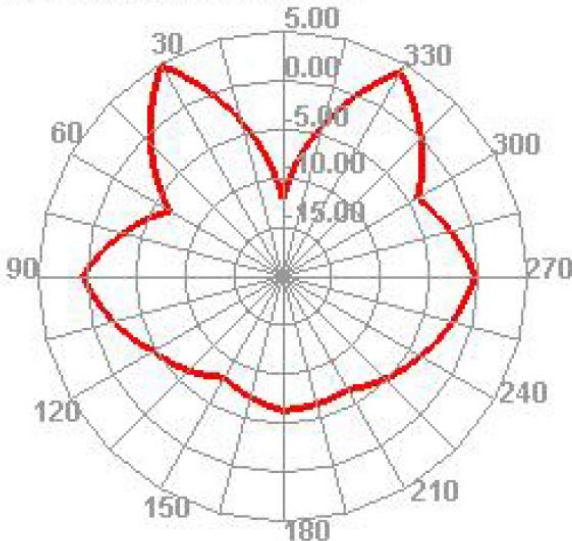
## 5850.000MHz



## 5850.000MHz H



## 5850.000MHz E1



## 5850.000MHz E2

