

NANE165X50XJC2CF

2G/3G/4G LTE External Antenna

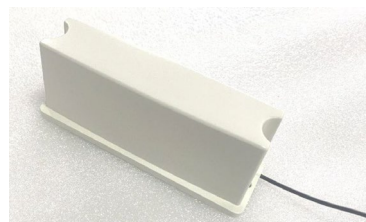


Description

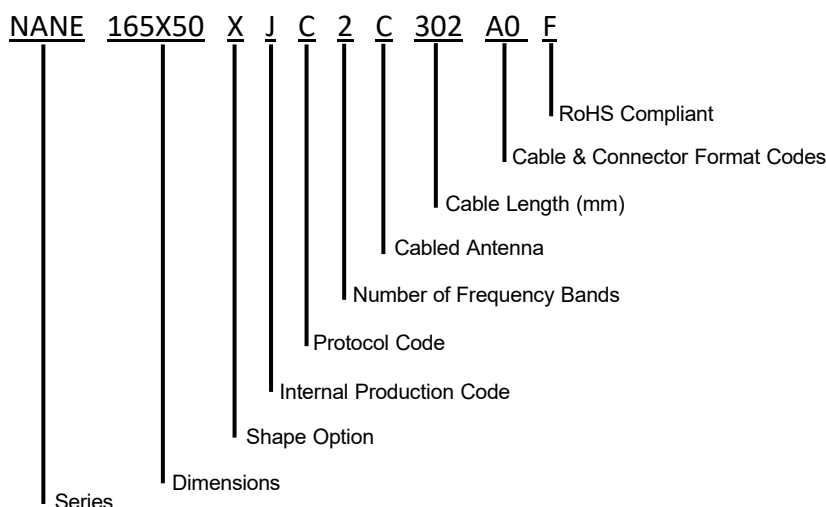
The NANE165X50XJC2C302A0F is a External antenna designed for dual-band 2G/3G/4G LTE applications. It operates within the frequency ranges of 698~960 MHz, 1710~2690 MHz, making it perfect for use in Cellular Communication, Gateways, and Meters.

Features

- 2G/3G/4G LTE Antenna
- IP66 Waterproof
- Low profile
- RoHS Complaint



Part Number Breakdown



Part Number Options

Part Number	Description	Protocol	Connector	Cable Type	Cable Length
NANE165X50XJC2C302A0F	Standard Part Number	Cellular	SMA MALE	RF174	3000 mm
NANE165X50XJC2C302A1F	Adhesive Option	Cellular	SMA MALE	RF174	3000 mm

The table represents assembled part numbers available on www.niccomp.com. For options not listed above please contact NIC

NANE165X50XJC2CF

2G/3G/4G LTE External Antenna



Specifications

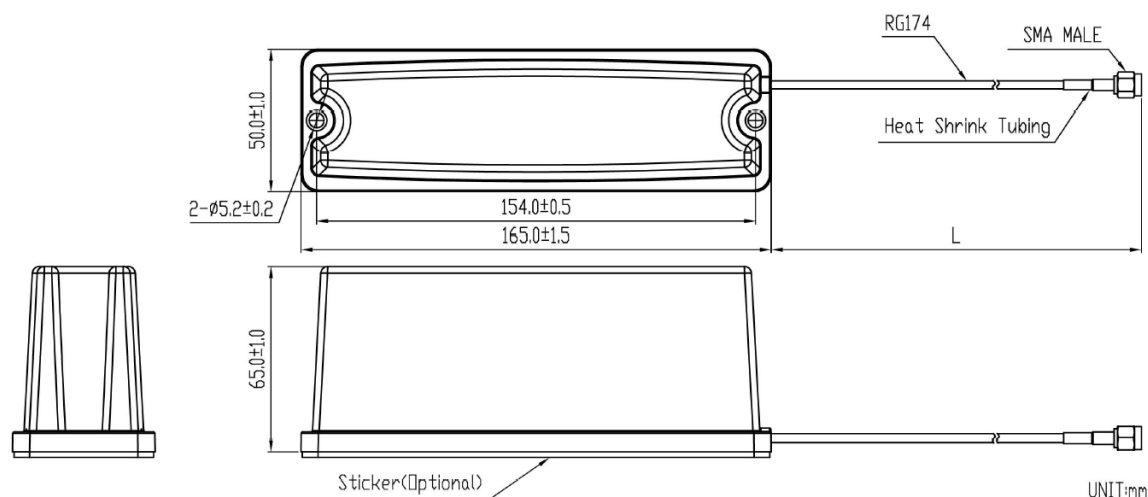
Electrical	
Frequency Range	698~960MHz 1710~2690MHz
Gain	2.0 dBi
VSWR	< 3.0
Polarization	Linear
Impedance	50 Ω
Radome Material	ASA
Mounting Method	Screw
Environmental	
Operating Temperature	-40°C~+85°C
Relative Humidity	Up to 95%
Ingress Protection	IP66
Vibration	10 to 55Hz with 1.5mm amplitude 2hours
ROHS Compliant	Yes

NANE165X50XJC2CF

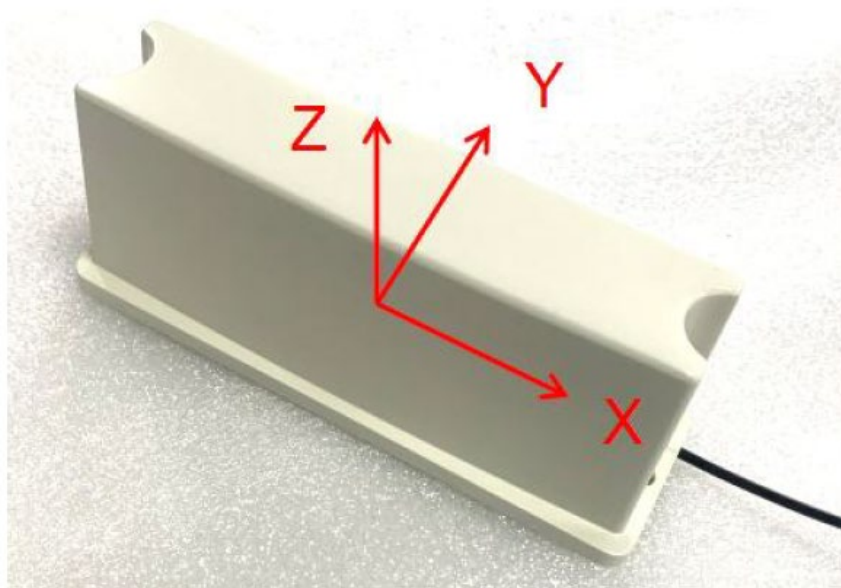
2G/3G/4G LTE External Antenna



Dimension Drawing

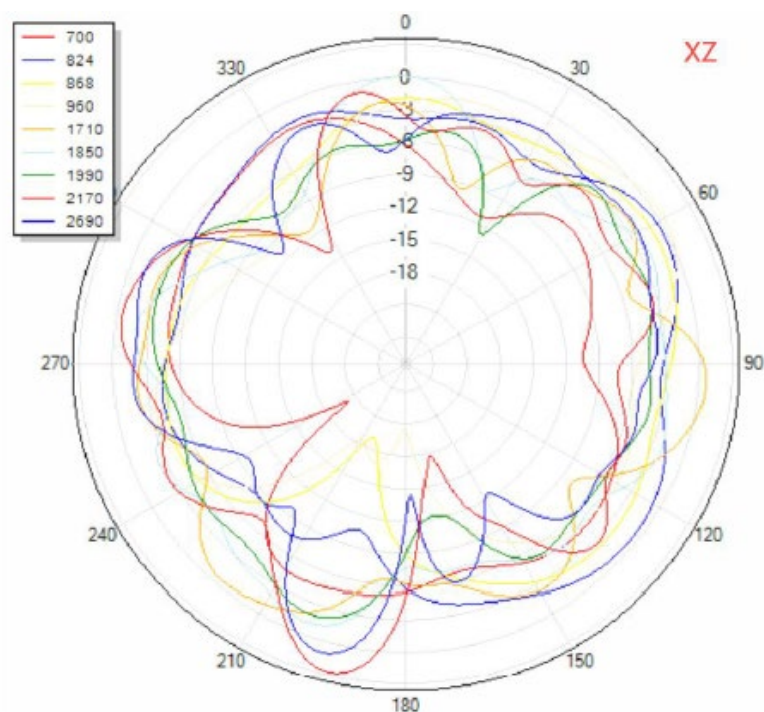
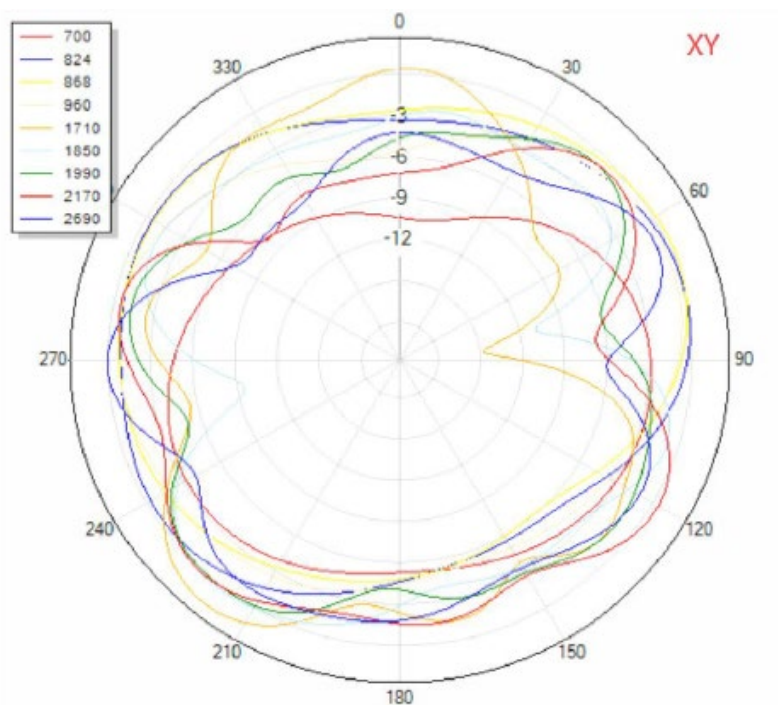


Radiation Patterns



NANE165X50XJC2CF

2G/3G/4G LTE External Antenna



NANE165X50XJC2CF

2G/3G/4G LTE External Antenna

