

NANE13X160WSJW2R450G2RF

2400 / 5150 MHz WIFI External Antenna



Features

- WIFI 2400 & 5150 MHz Bands
- Waterproof IP67 Rating
- RoHs Complaint



Applications

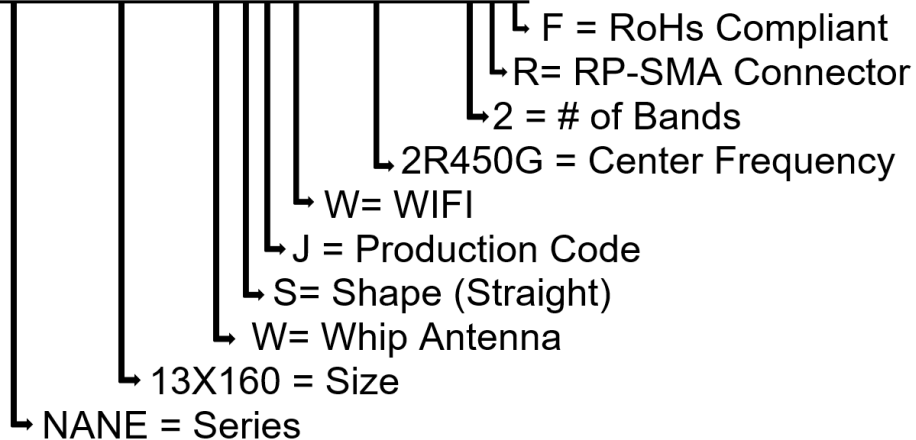
- Routers
- Gateways
- Meters

Specifications

Electrical	
Frequency Range	2400 ~ 2500MHz 5150 ~ 5850MHz
Gain	5 dBi
V.S.W.R	< 2.0
Polarization	Linear
Impedance	50Ω
Environmental	
Operating Temperature -	-20°C~+65°C
Vibration	10 to 55Hz with 1.5mm amplitude 2hours
RoHs Compliant	Yes

Part Number Breakdown

NANE13X160WSJW2R450G2RF

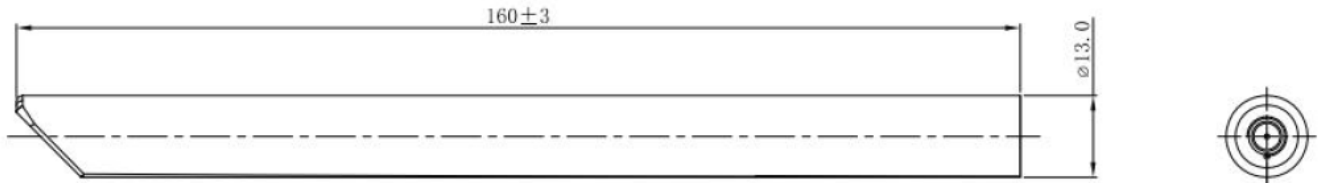


NANE13X160WSJW2R450G2RF

2400 / 5150 MHz WIFI External Antenna



Dimension Drawing



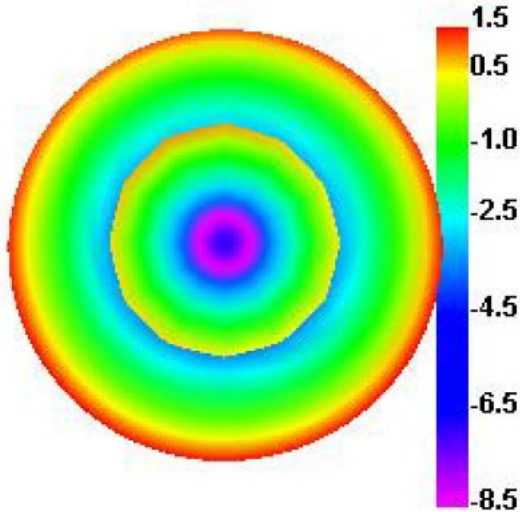
Unit: MM

Dimensions (mm) & Mechanical

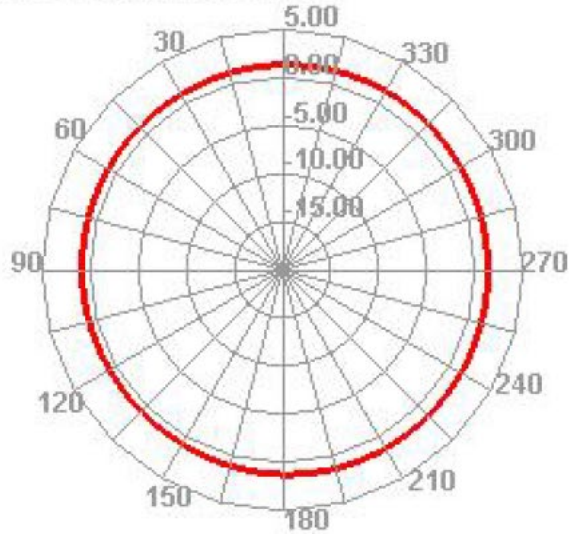
Body Length	160 ± 3
Diameter	13.0
Connection Type	RP SMA Male
Waterproof	IP67

Radiation Patterns

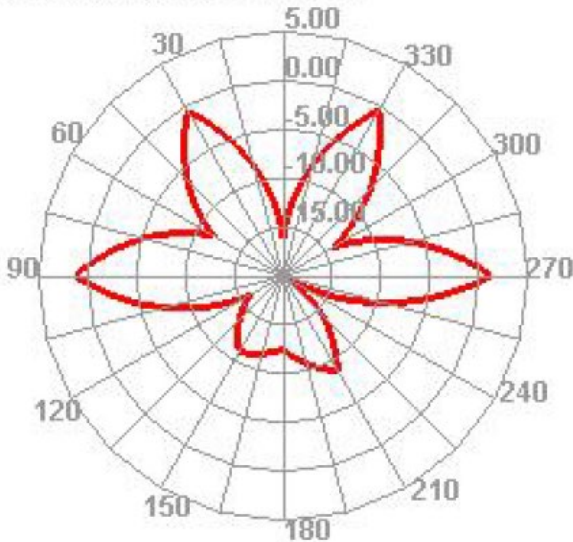
2400.000MHz



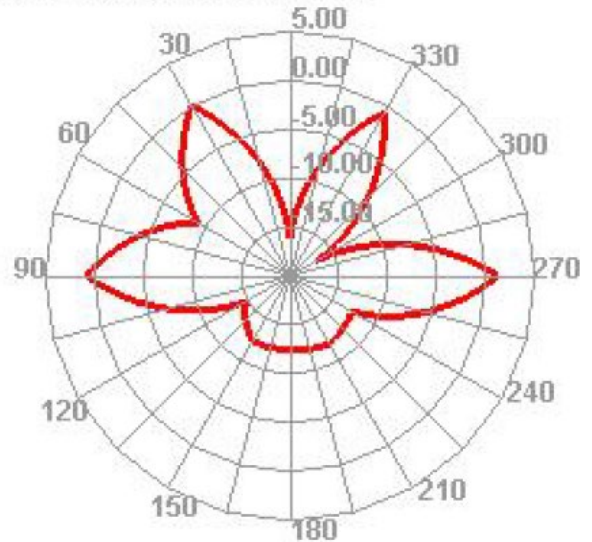
2400.000MHz H



2400.000MHz E1



2400.000MHz E2

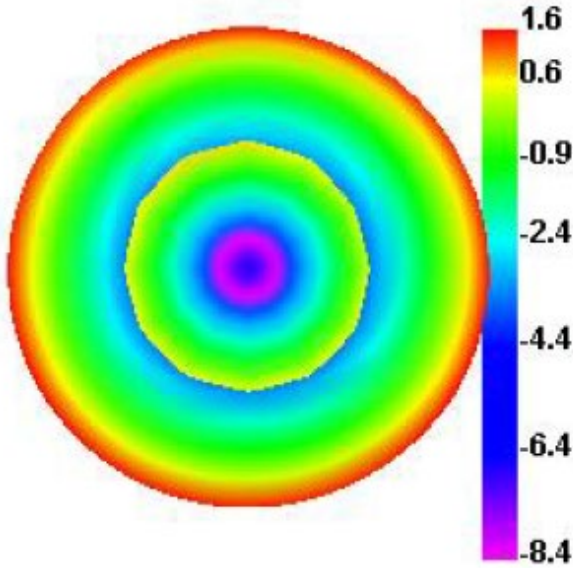


NANE13X160WSJW2R450G2RF

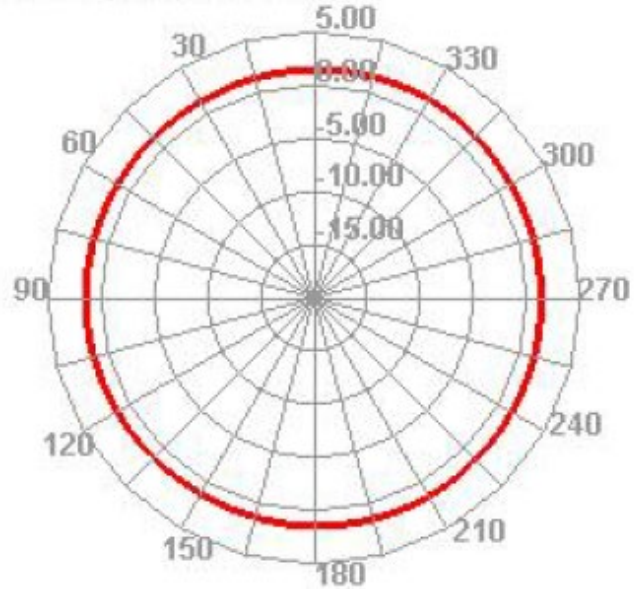
2400 / 5150 MHz WIFI External Antenna



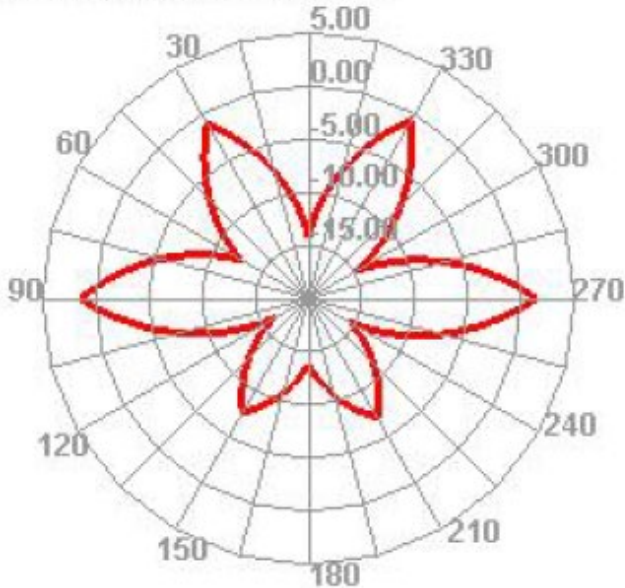
2450.000MHz



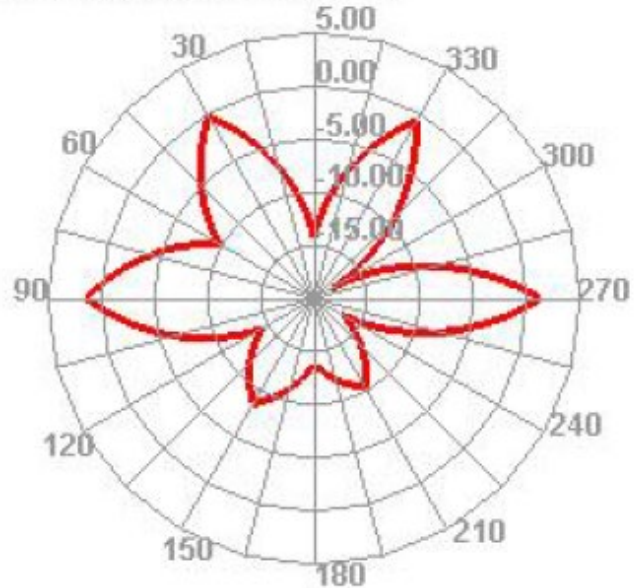
2450.000MHz H



2450.000MHz E1



2450.000MHz E2

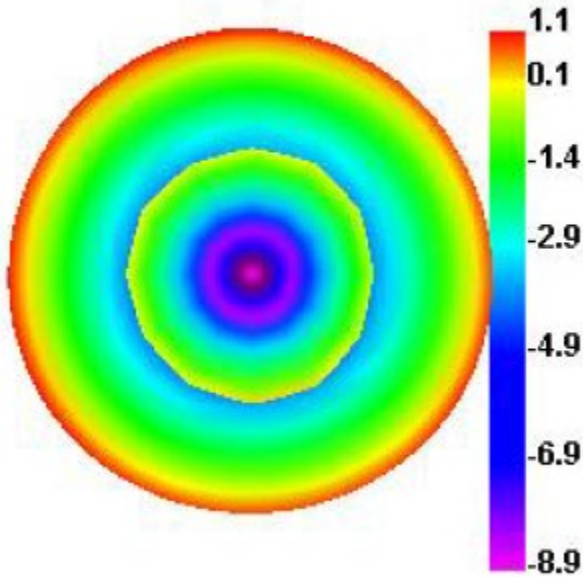


NANE13X160WSJW2R450G2RF

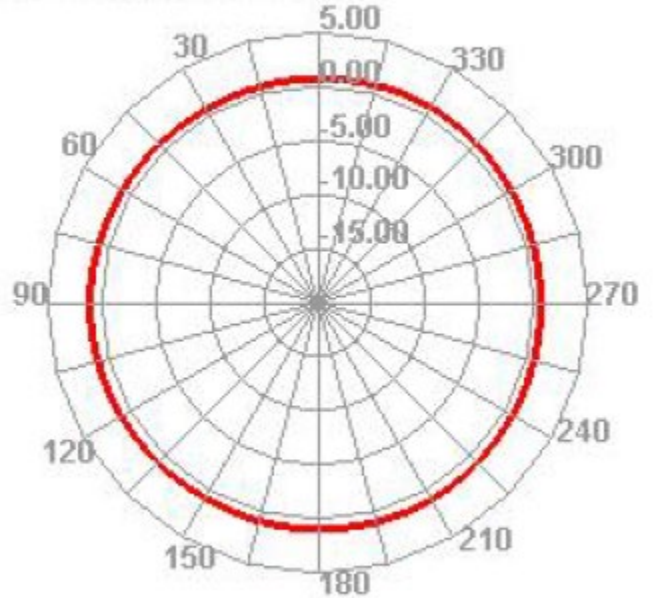
2400 / 5150 MHz WIFI External Antenna



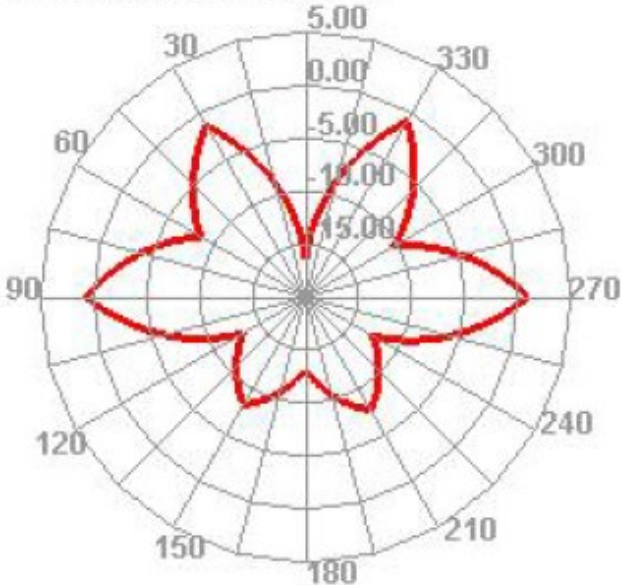
2500.000MHz



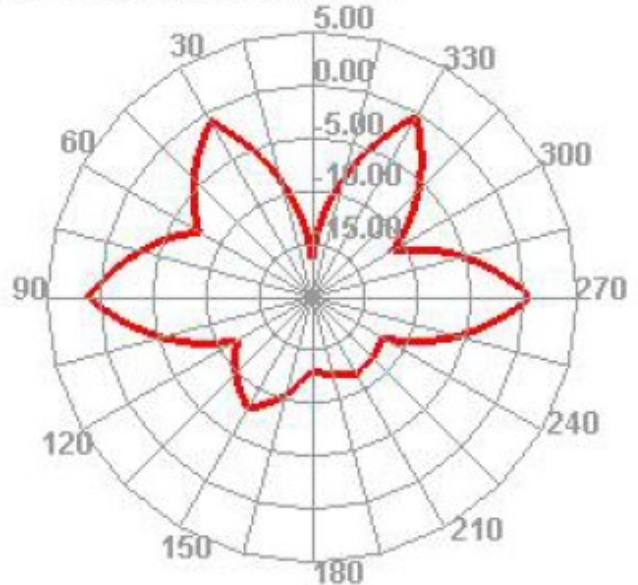
2500.000MHz H



2500.000MHz E1



2500.000MHz E2

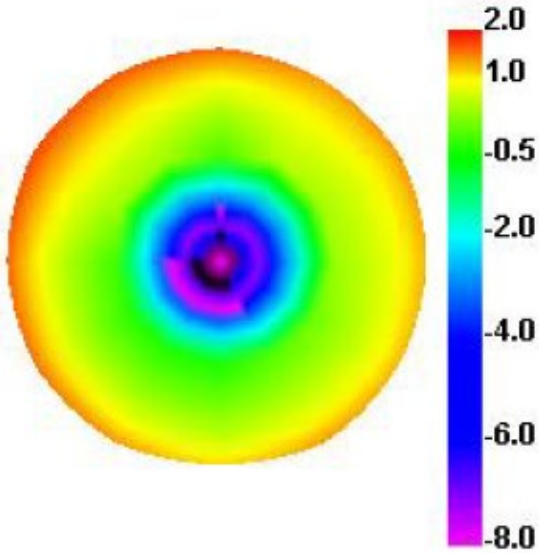


NANE13X160WSJW2R450G2RF

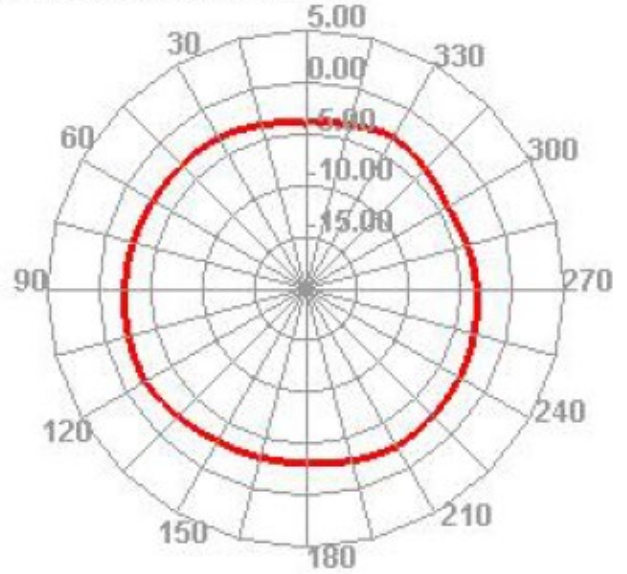
2400 / 5150 MHz WIFI External Antenna



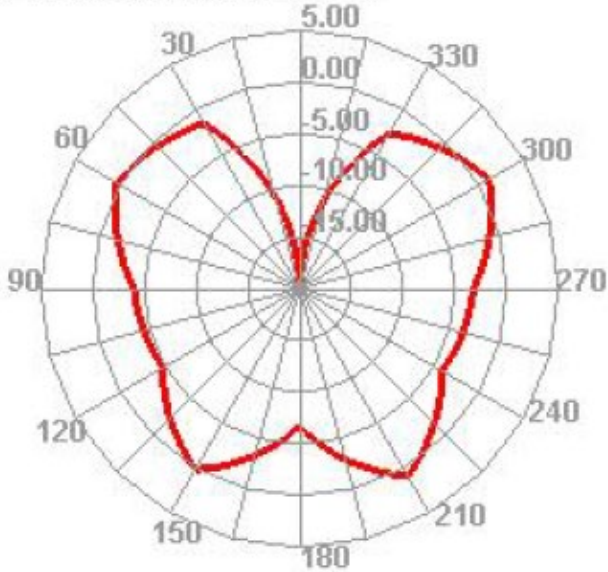
5150.000MHz



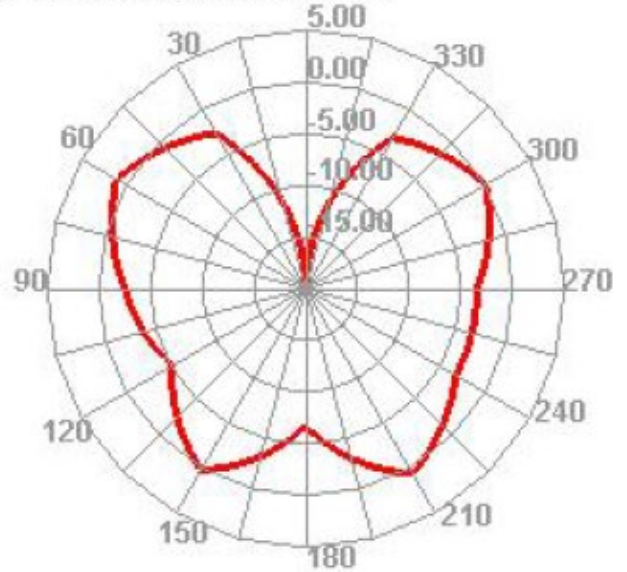
5150.000MHz H



5150.000MHz E1



5150.000MHz E2

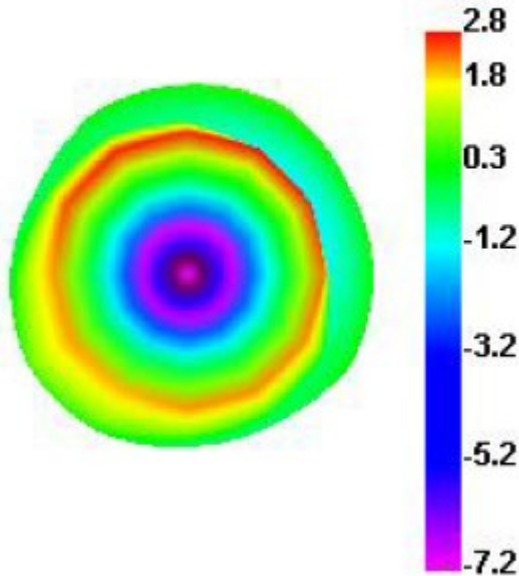


NANE13X160WSJW2R450G2RF

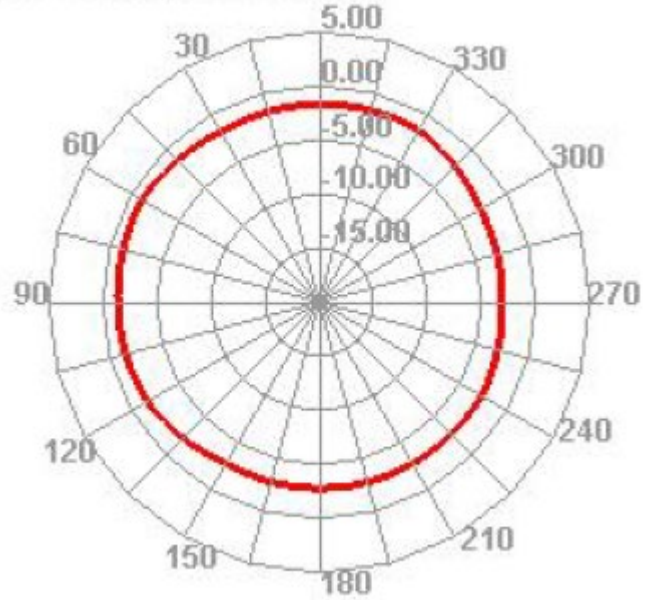
2400 / 5150 MHz WIFI External Antenna



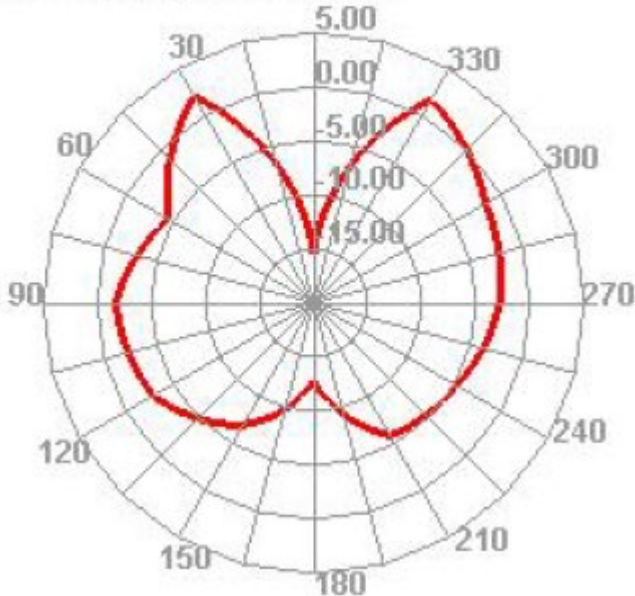
5500.000MHz



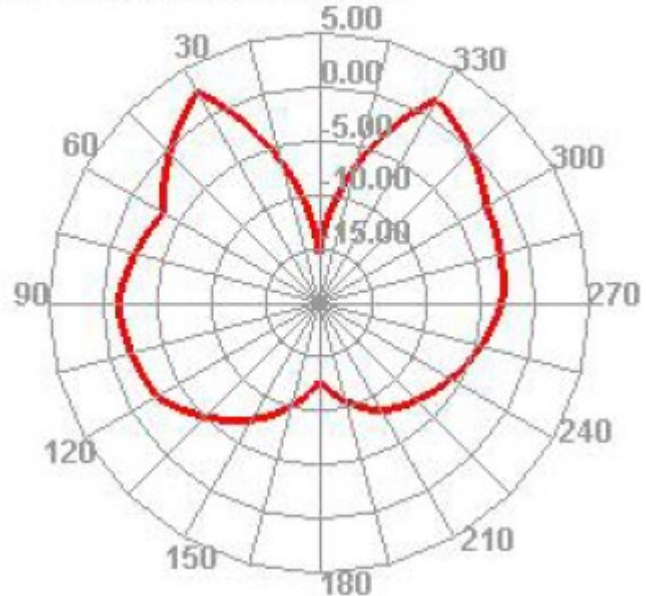
5500.000MHz H



5500.000MHz E1



5500.000MHz E2

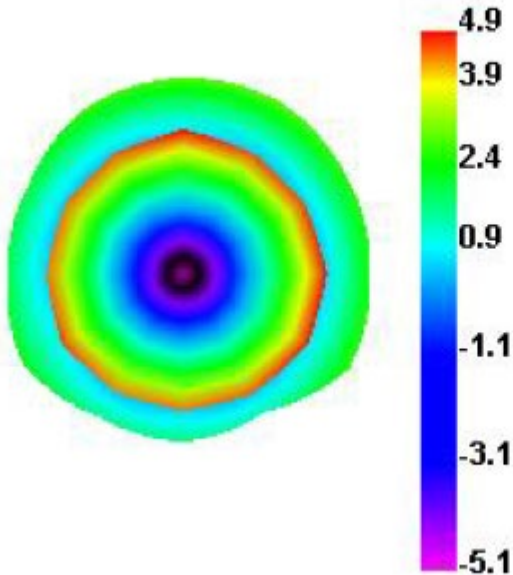


NANE13X160WSJW2R450G2RF

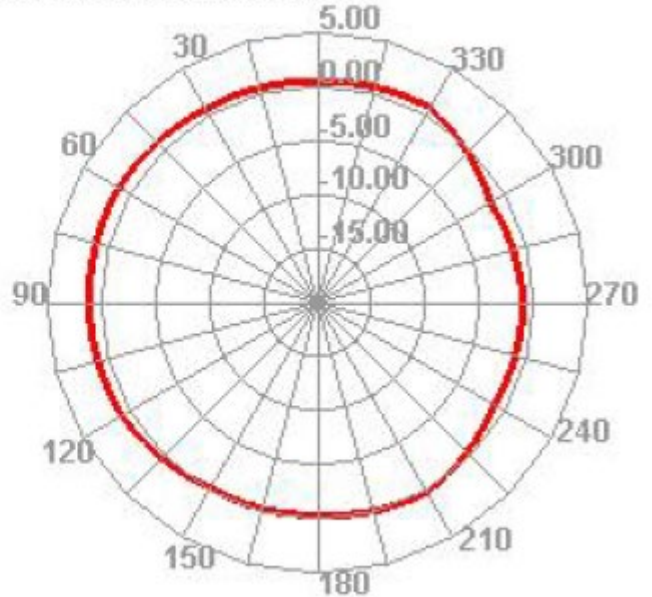
2400 / 5150 MHz WIFI External Antenna



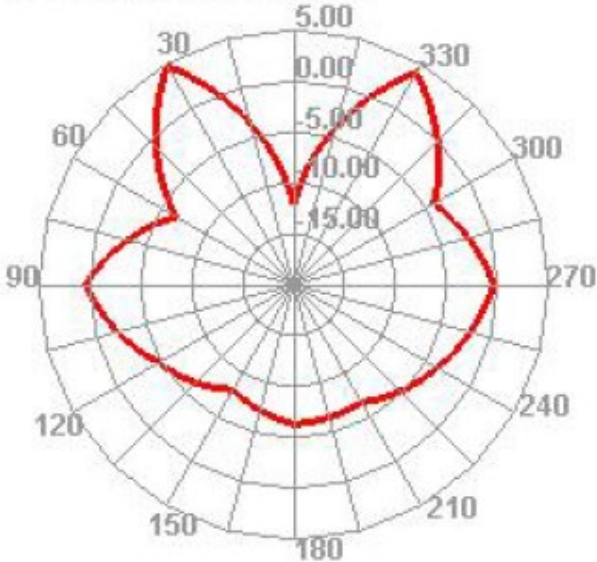
5850.000MHz



5850.000MHz H



5850.000MHz E1



5850.000MHz E2

