

# NANE11X195WTJW2R450G2MF

## 2.4 & 5.1 GHz WIFI External Antenna



### Description

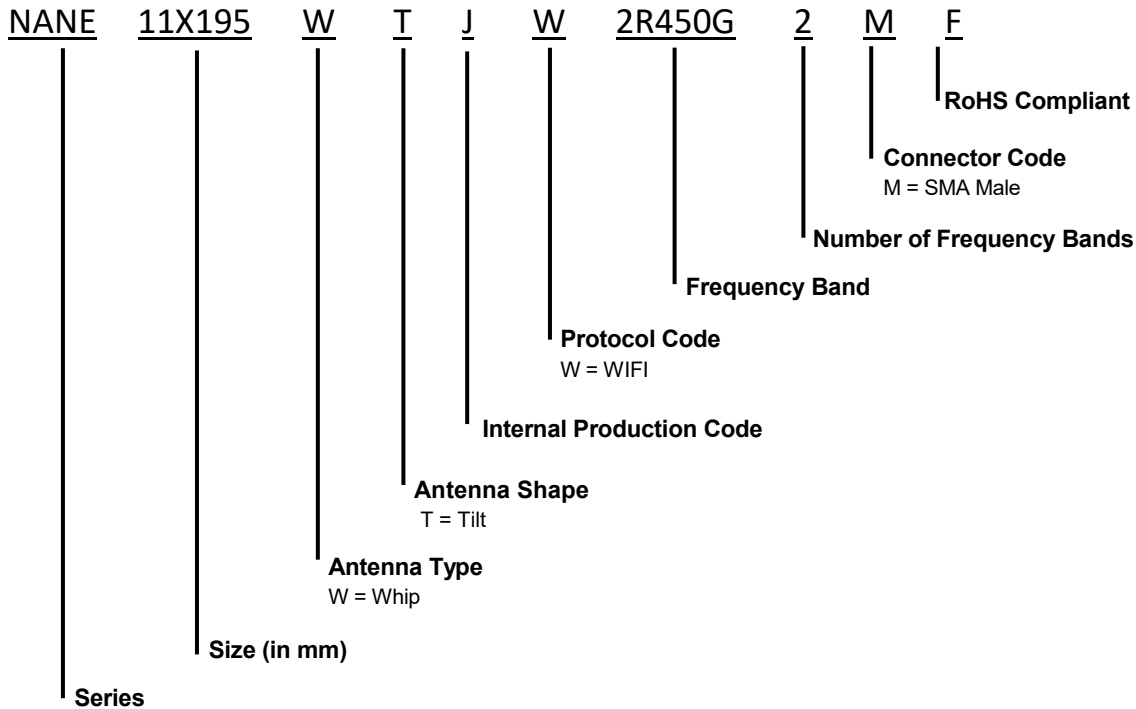
NANE11X195WTJW2R450G2MF is an External Whip antenna designed for WIFI applications. It operates within the frequency ranges of 2400~2500 MHz and 5150~5850MHz making it perfect for Routers, Meters and Gateways.

### Features

- Supports 2.4 & 5.1 GHz WIFI Bands
- Up to 90° flexibility
- RoHs Complaint



### Part Number Breakdown



### Part Number Options

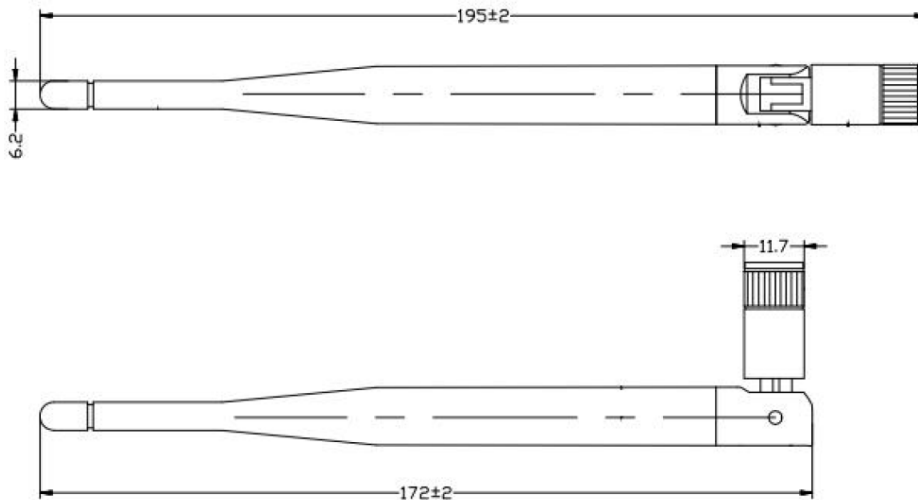
Part Number	Protocol	Connector
NANE11X195WTJW2R450G2MF	WIFI	SMA Male

The table represents assembled part numbers available on [www.niccomp.com](http://www.niccomp.com). For options not listed above please contact NIC

### Specifications

Electrical	
Frequency Range	2400~2500 MHz 5150~5850 MHz
Gain	5 dBi
V.S.W.R	< 3.0
Polarization	Linear
Impedance	50Ω
Environmental	
Operating Temperature	-20°C~+65°C
Vibration	10 ~ 55Hz with 1.5mm Amplitude 2 Hours
RoHS Compliant	Yes

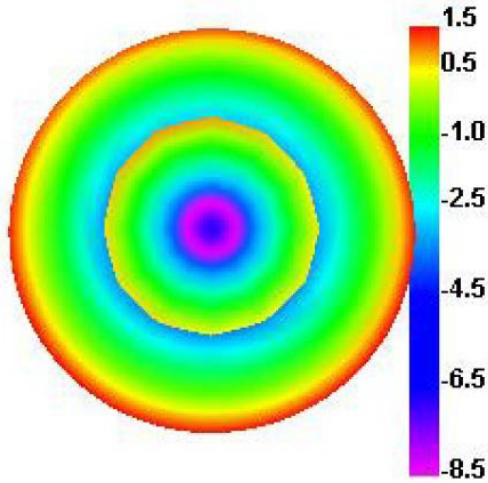
### Dimensions



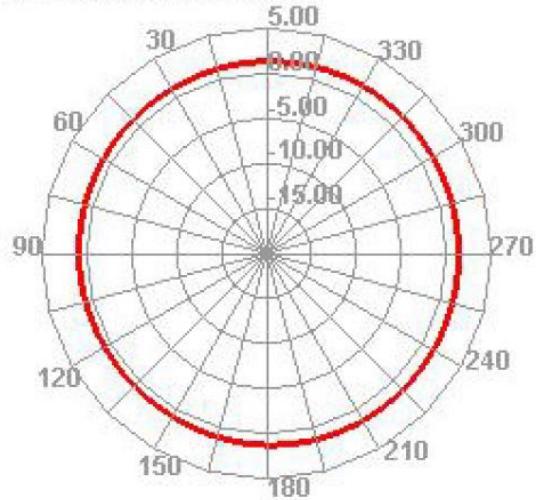
Unit: MM

### Radiation Pattern

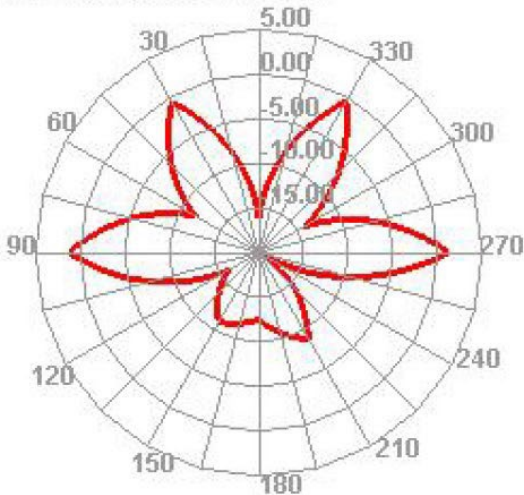
#### 2400.000MHz



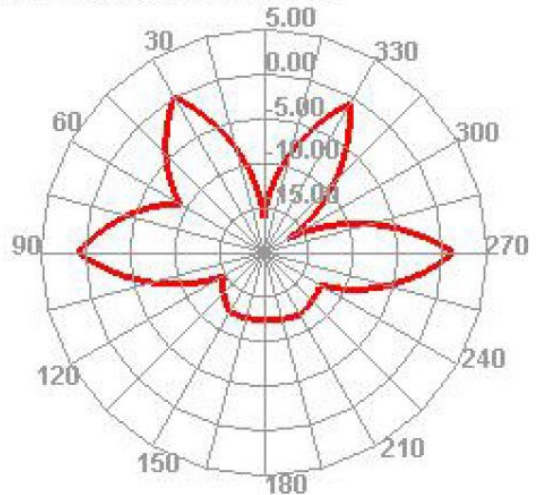
#### 2400.000MHz H



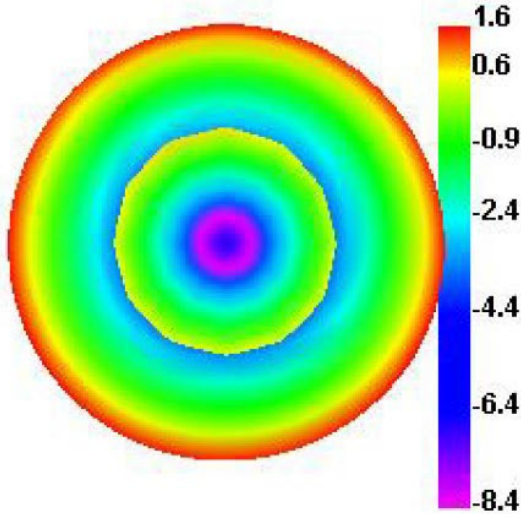
#### 2400.000MHz E1



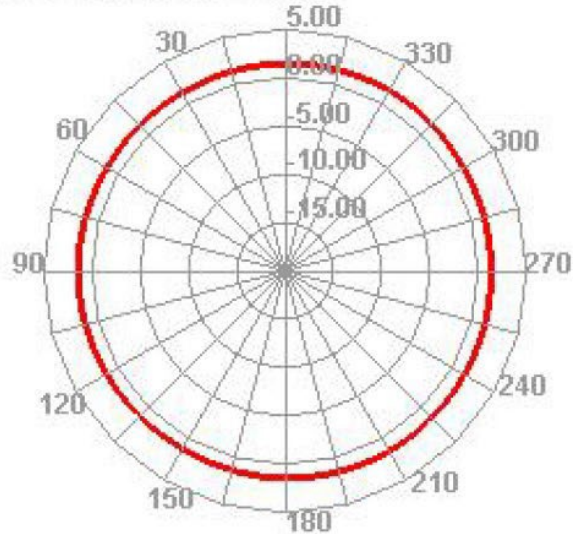
#### 2400.000MHz E2



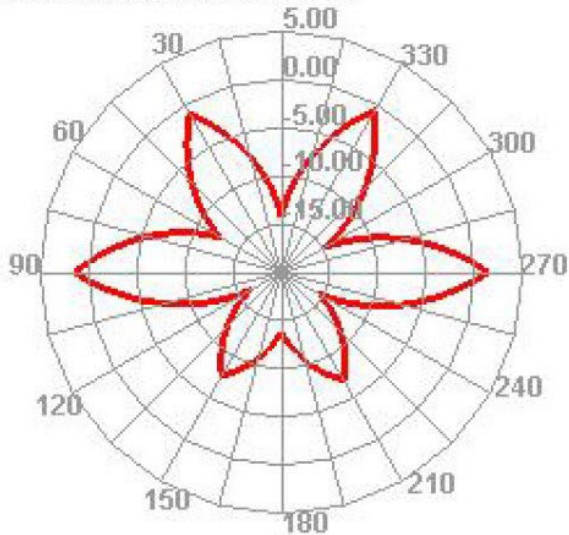
### 2450.000MHz



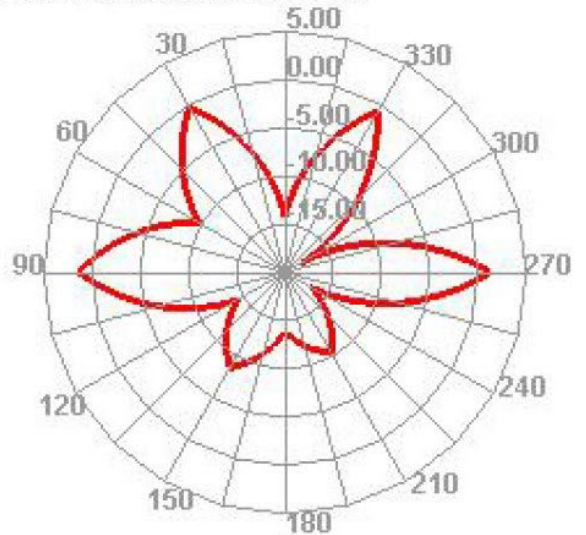
### 2450.000MHz H



### 2450.000MHz E1



### 2450.000MHz E2

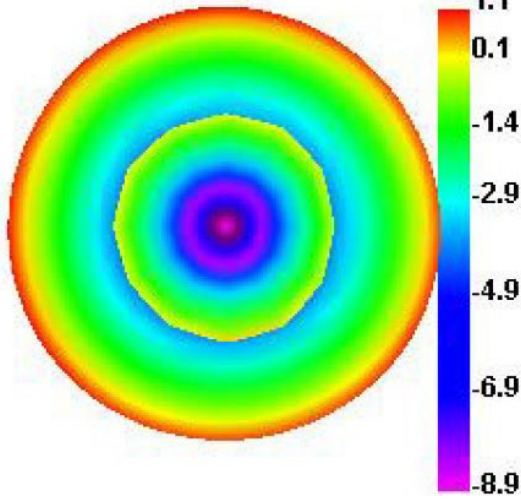


# NANE11X195WTJW2R450G2MF

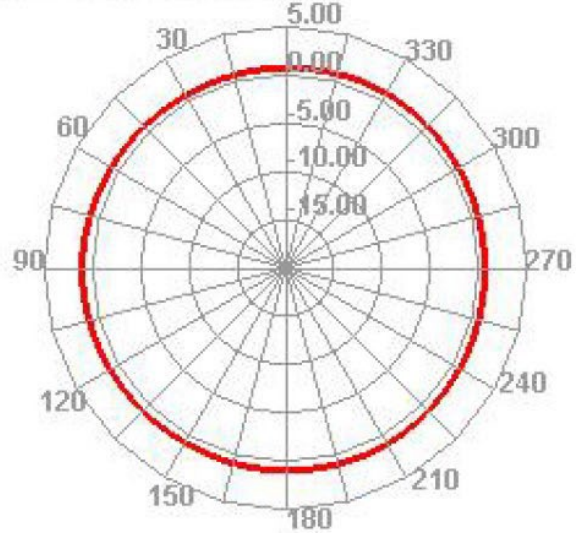
2.4 & 5.1 GHz WIFI External Antenna



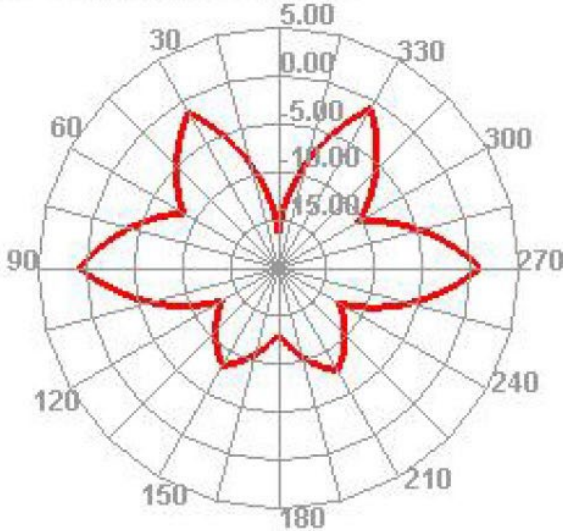
### 2500.000MHz



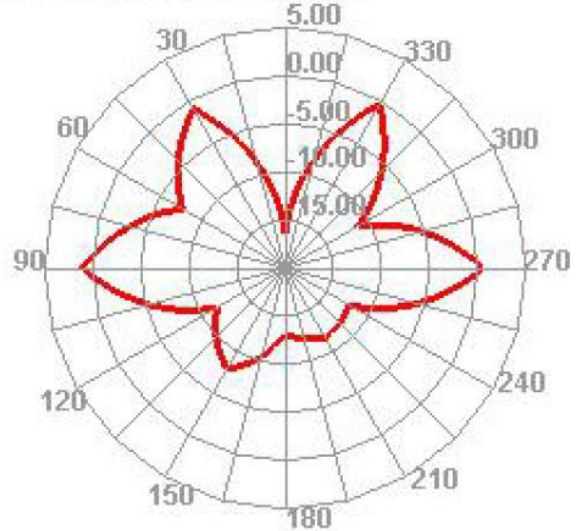
### 2500.000MHz H



### 2500.000MHz E1



### 2500.000MHz E2

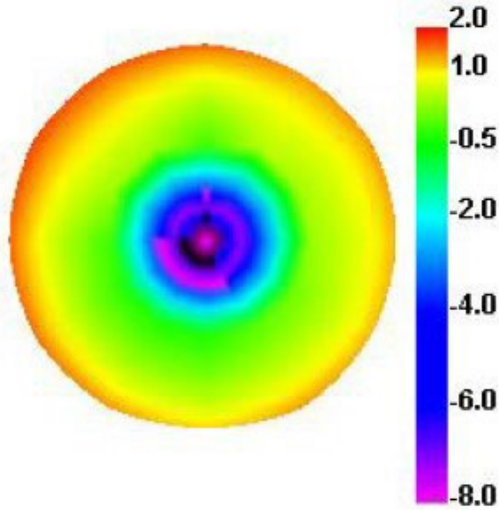


# NANE11X195WTJW2R450G2MF

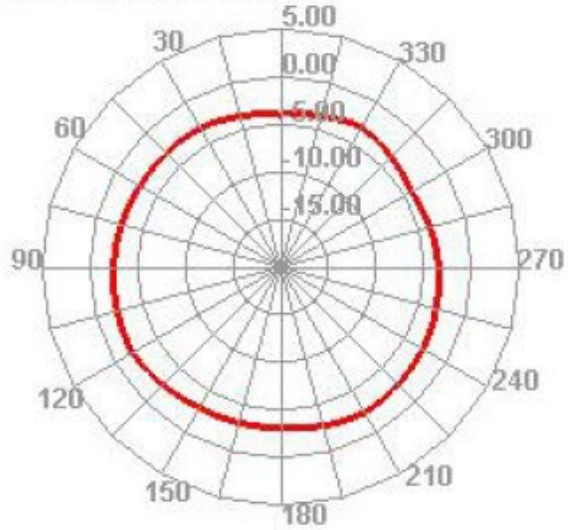
2.4 & 5.1 GHz WIFI External Antenna



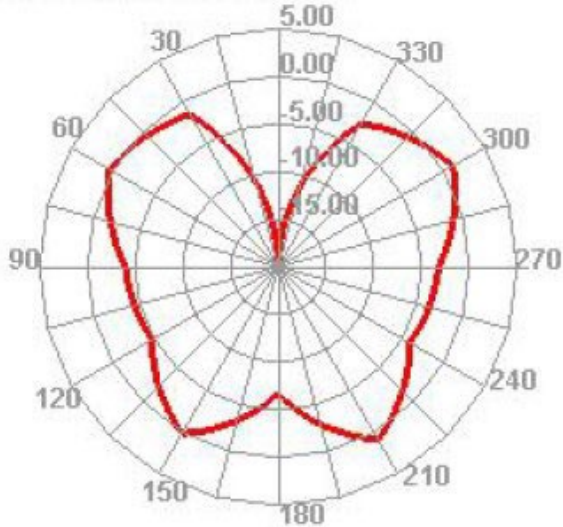
### 5150.000MHz



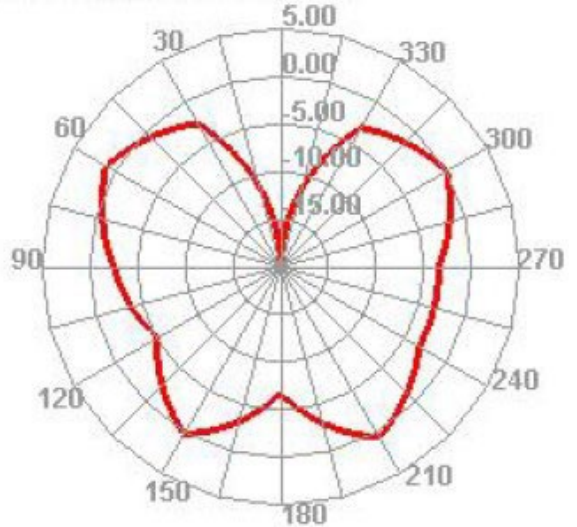
### 5150.000MHz H



### 5150.000MHz E1



### 5150.000MHz E2

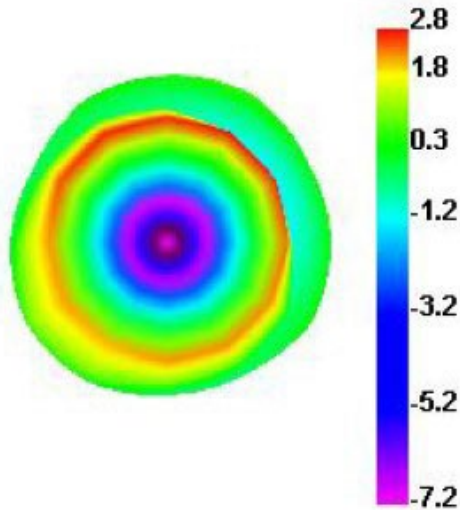


# NANE11X195WTJW2R450G2MF

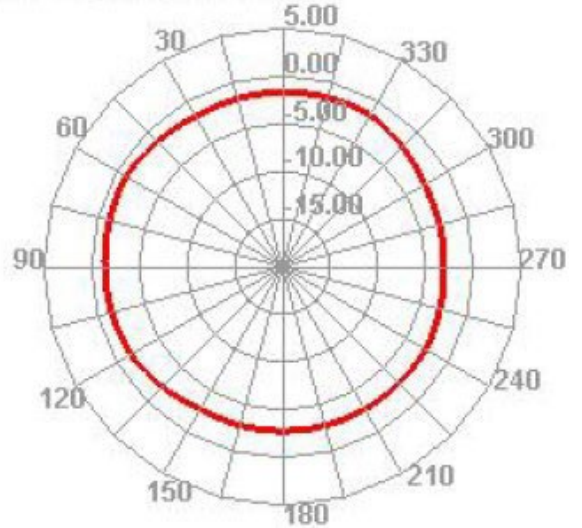
2.4 & 5.1 GHz WIFI External Antenna



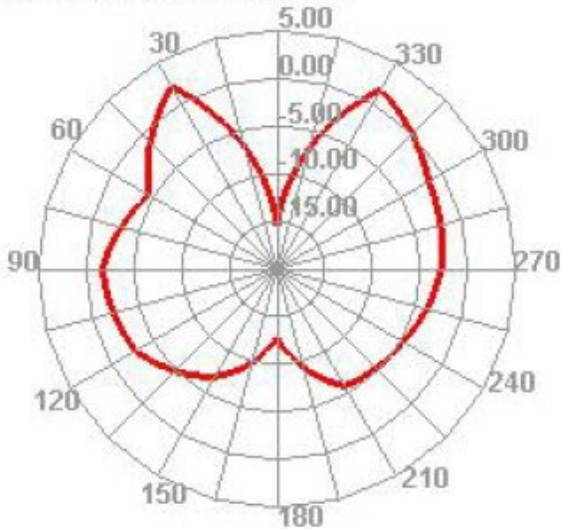
### 5500.000MHz



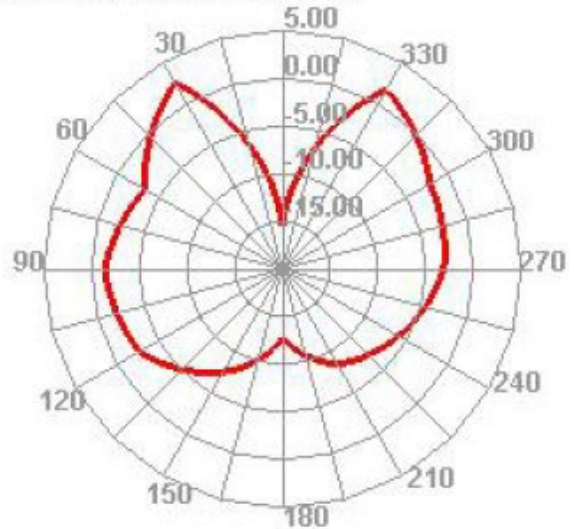
### 5500.000MHz H



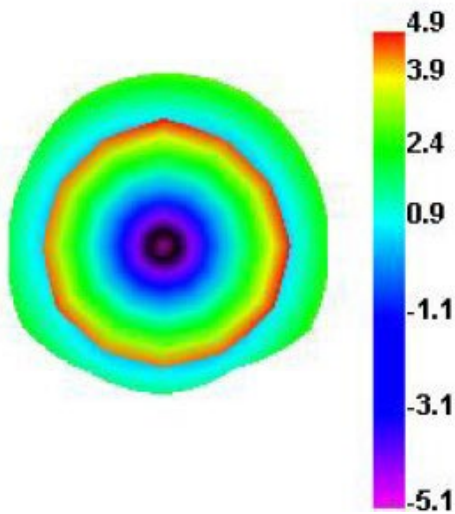
### 5500.000MHz E1



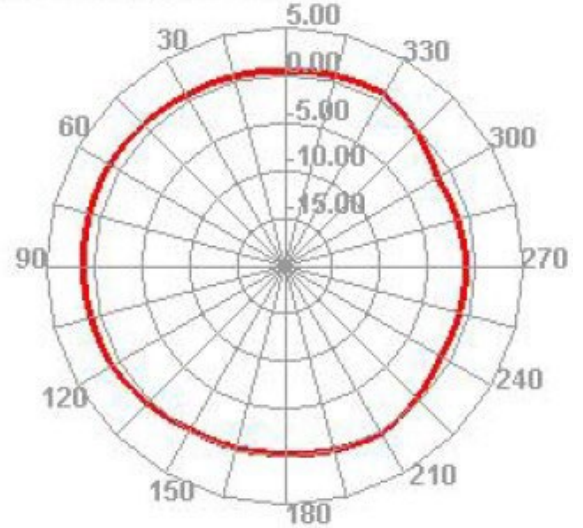
### 5500.000MHz E2



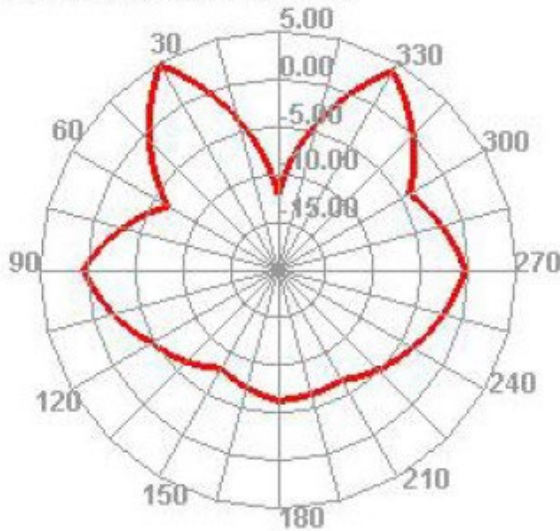
### 5850.000MHz



### 5850.000MHz H



### 5850.000MHz E1



### 5850.000MHz E2

