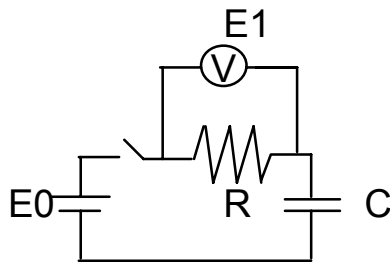


Measuring condition



$$I = E1/1000 \text{ (A)}$$

Eo: 5.0V

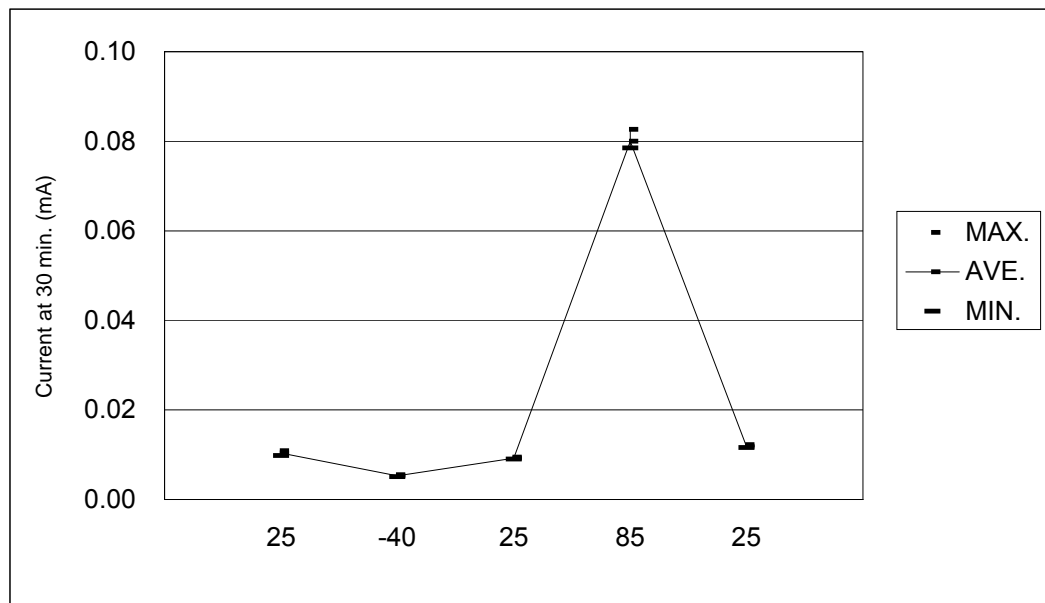
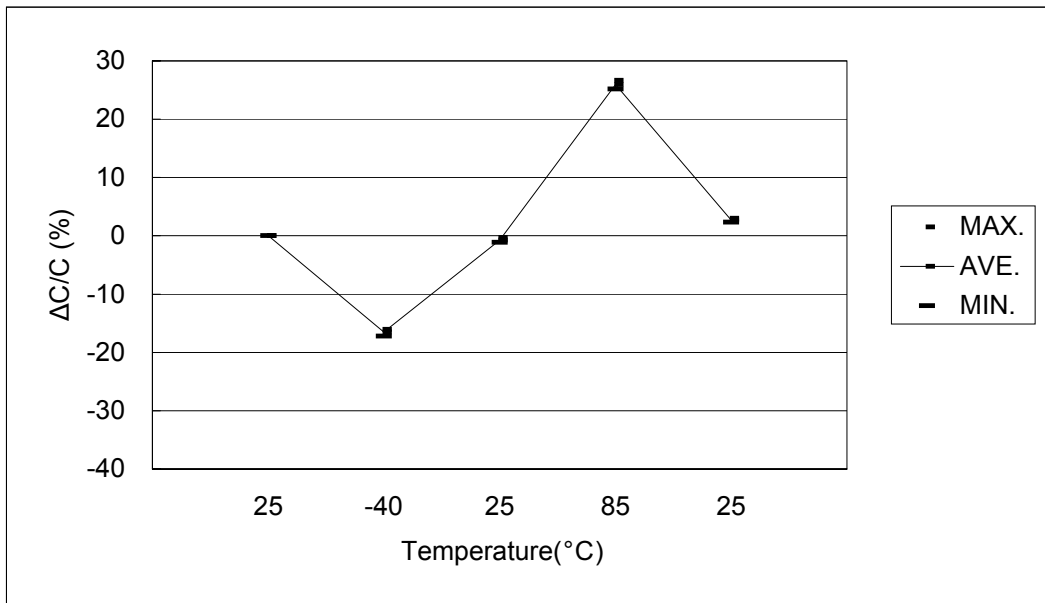
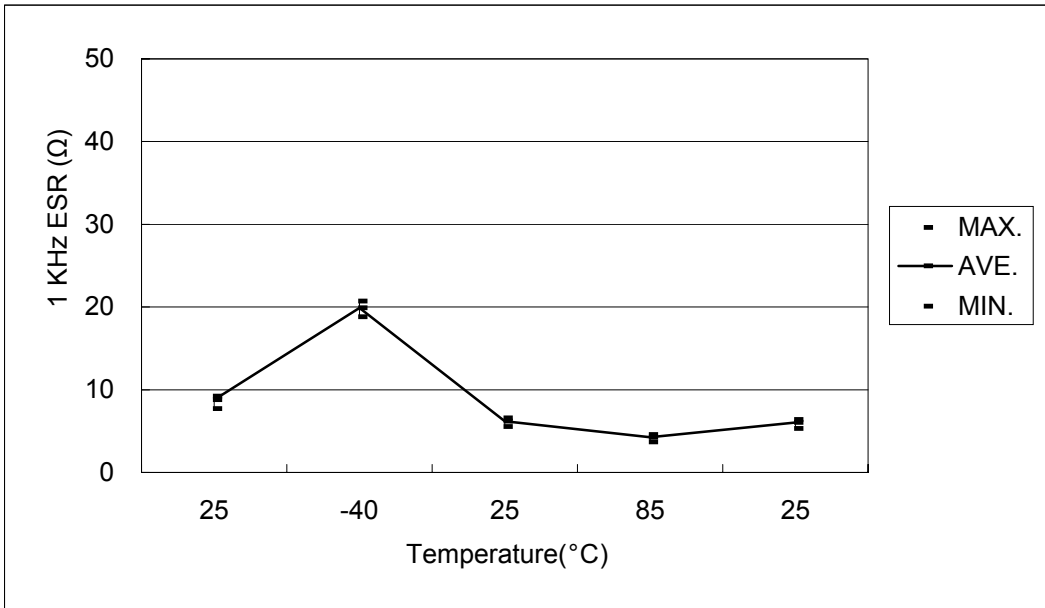
R : 1000Ω

I : Leakage current

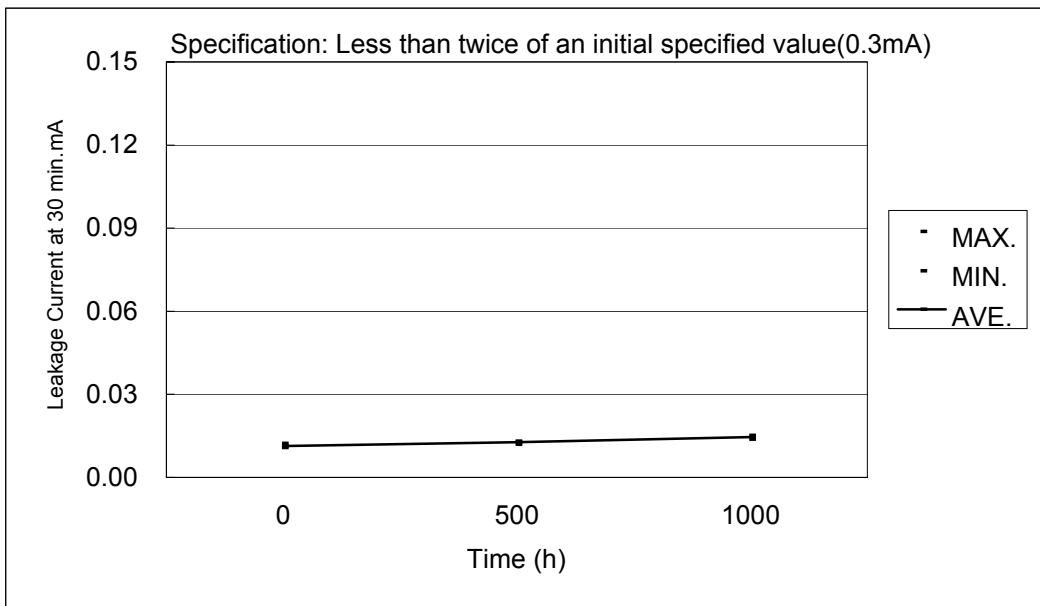
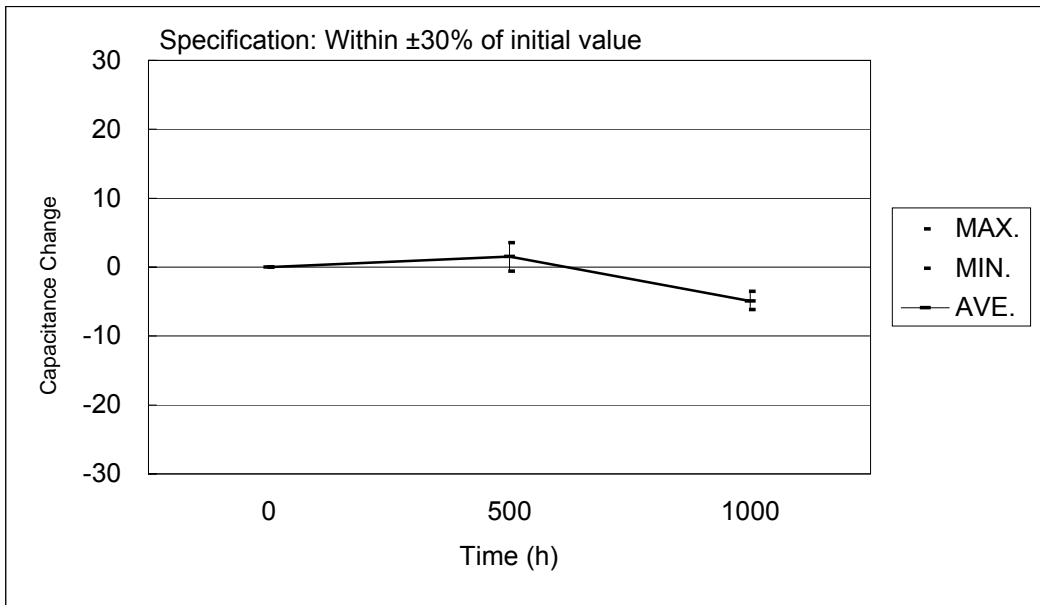
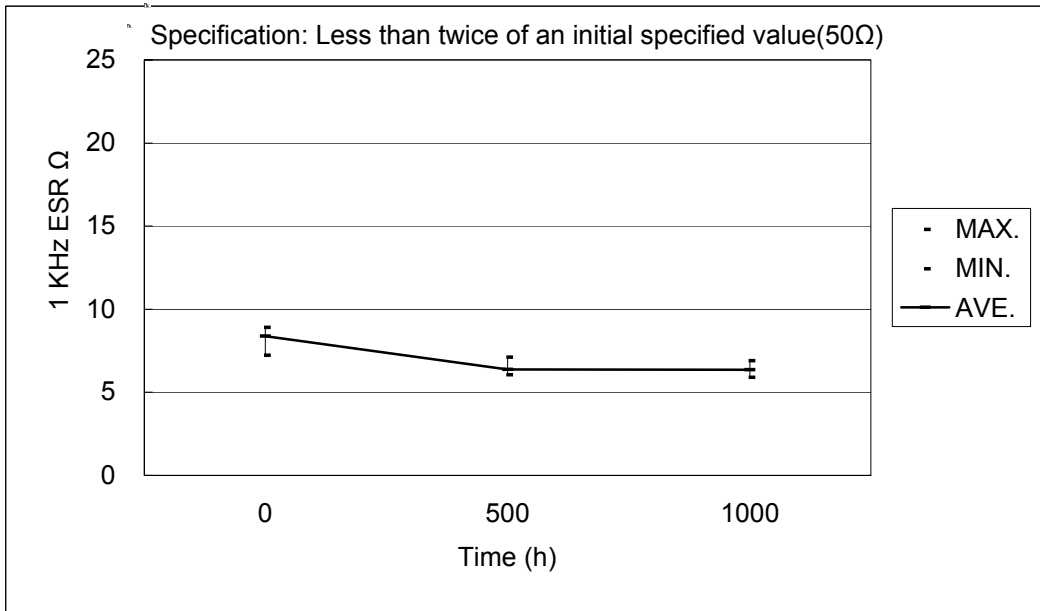
## Typical Temperature Characteristics

NEXC104Z5.5V10.5X5.5TRF (Sample = 10)

Cycle: +25°C, -40°C, +25°C, +85°C, +25°C



**High Temperature Load Test**  
 NEXC104Z5.5V10.5X5.5TRF  
 1000 Hours @ +70°C 5.5Vdc (Sample =10)



Special Extended Temperature Load Life  
NEXC104Z5.5V10.5X5.5TRF  
1000 hours @ +85°C 5.5Vdc (n=10)

