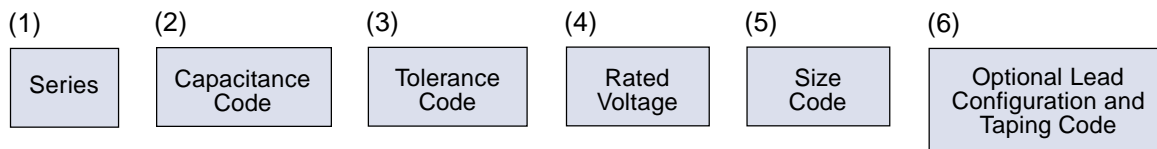
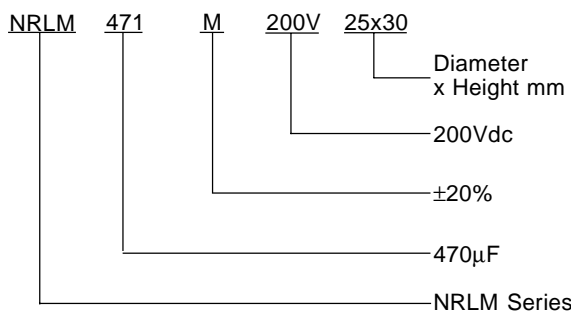
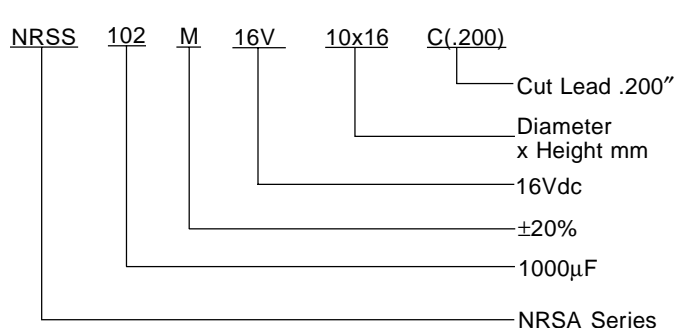
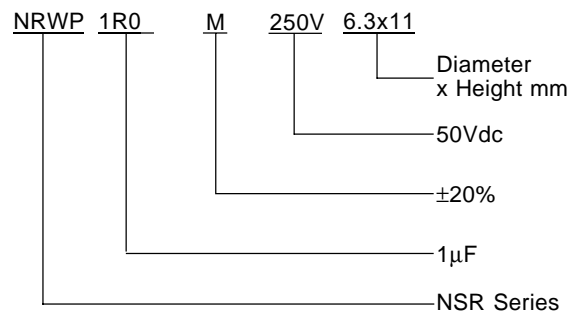


Part Numbering System for Aluminum & Tantalum Electrolytic Capacitors

ALUMINUM ELECTROLYTIC CAPACITORS



Examples:



RoHS Compliance: All part numbers were made RoHS compliant in 2004. The letter "F" should be added as the last character in the part number suffix to reflect RoHS compliance.

(1) Series-Type

(2) Capacitance code expressed in microfarads (μF). Three digit code, where first two digits are significant ("R" indicates decimal point for under $10\mu\text{F}$) and third digit is number of zeros.

Examples:

Capacitance (μF)	Code	Capacitance (μF)	Code
0.1	R10	47	470
0.47	R47	100	101
1.0	1R0	1000	102
10	100	10,000	103

(3) Tolerance Code:

K = $\pm 10\%$ Q = $-10\sim+30\%$
M = $\pm 20\%$ T = $-10\sim+50\%$

(4) Rated Voltage in V

(5) Size expressed in mm:

Radial lead and snap-in can = Diameter x Height
Axial leads = Diameter x Length



Part Numbering System for Aluminum & Tantalum Electrolytic Capacitors

(6) Packaging and lead configuration codes:

RADIAL LEAD CODES

C(.XXX) = Cut leads with actual length (in inches)

F1 = 2.5mm (.100") Formed Lead Space

F1C(.XXX) = 2.5mm (.100") Formed Lead Space & cut leads with actual length (in inches)

F2 = 5mm (.200") Formed Lead Space

F2C(.XXX) = 5mm (.200") formed lead space and cut leads with actual length (in inches)

F3 = 7.5mm (.300") lead spacing

F3C = 7.5mm (.300") lead spacing and cut leads with actual length (in inches)

SP = Snap-in type with standard lead spacing and 4.5mm lead length

SP7.5LL = Snap-in type with standard lead space and 7.5mm lead length

SP7.5LS = Snap-in type with 7.5mm lead space and 4.5mm lead length

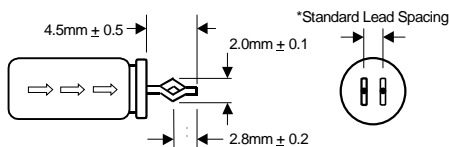
TB = Tape/Box (ammo Style), 5mm (.200") lead spacing

TBF1 = Tape/Box (ammo style), 2.5mm (.100") lead spacing

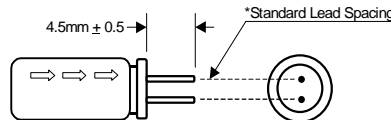
TBST = Tape/Box (ammo style), straight leads (spacing dependent on case size)

RoHS Compliance: All part numbers were made RoHS compliant in 2004. The letter "F" should be added as the last character in the part number suffix to reflect RoHS compliance.

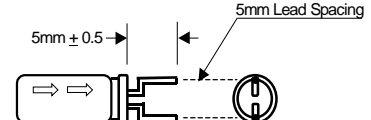
EXAMPLES: (SP) Snap-in Style



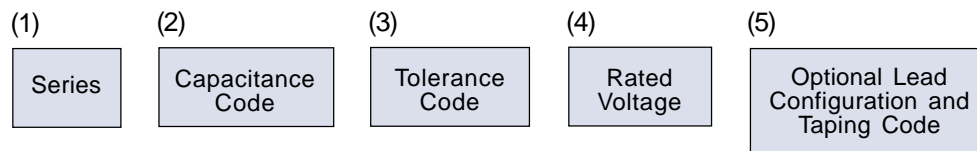
(C) Cut Style



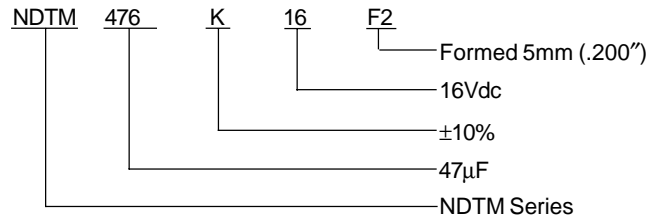
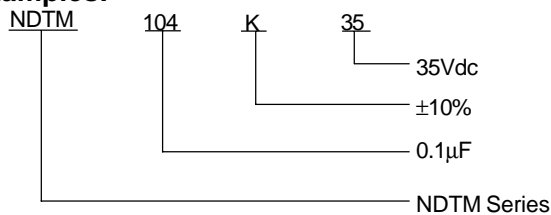
(CF) Cut & Formed Style



SOLID DIP TANTALUM CAPACITORS



Examples:



(1) Series-Type

(2) Capacitance Code expressed in picofarads (pF). Three digit code, where first two digits are significant and third is number of zeros

(3) Tolerance code:

J = ±5%

K = ±10%

M = ±20%

(4) Rated Voltage in V

(5) Lead configuration and taping codes:

F2 = 5mm (.200") formed lead spacing

C(.XXX) = cut leads with actual length (in inches)

TBF2 = Tape/Reel, 5.0mm (.200") lead spacing

Examples:

Capacitance (uF)	Code	Capacitance (uF)	Code
0.1	104	10	106
0.47	474	47	476
1.0	105	100	107

TBF1 = Tape/Box, 2.5mm (.100") lead spacing

TBF2 = Tape/Box (Ammo) 5.0mm (.200") lead spacing

