



NIC COMPONENTS CORP.

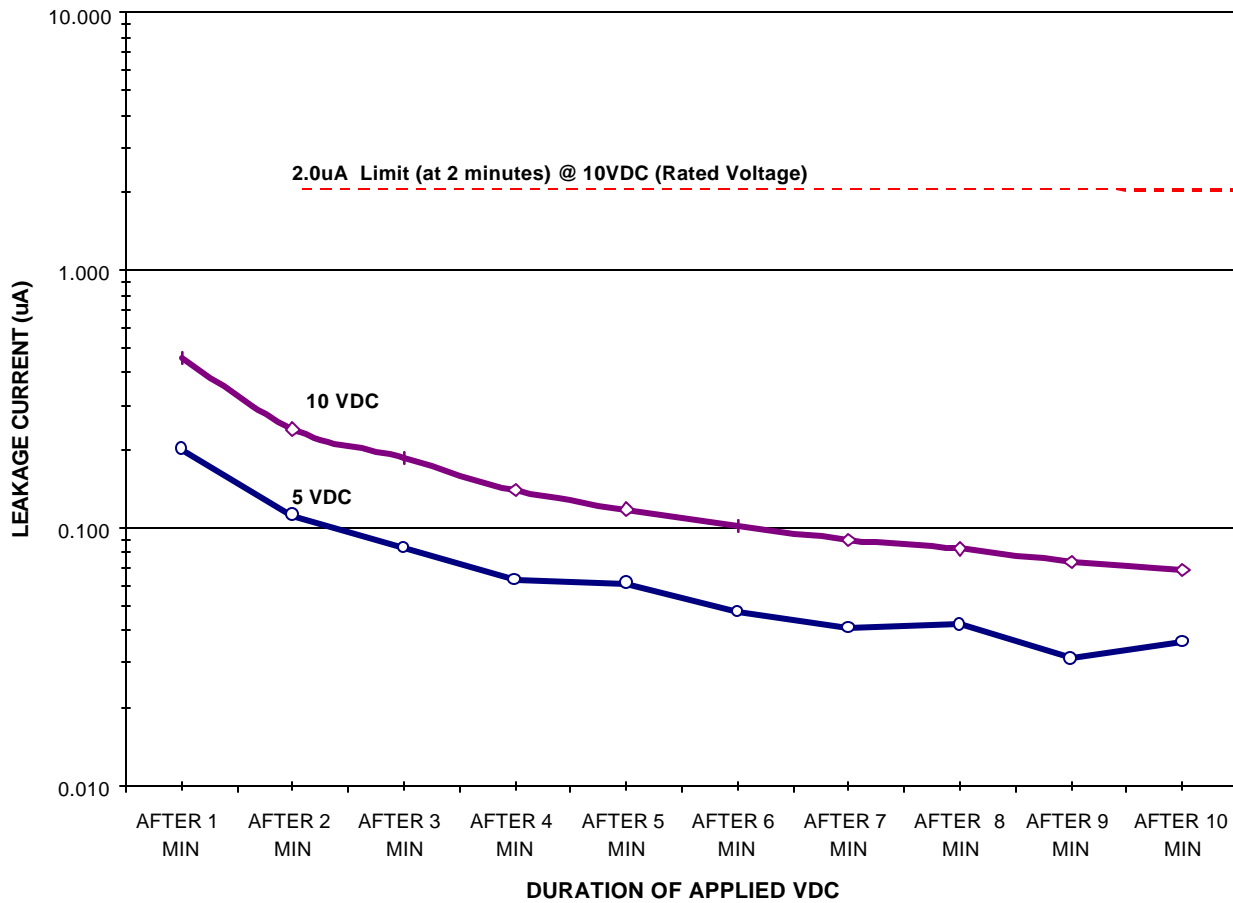
70 Maxess Road • Melville, New York 11747
(631) 396-7500 • Fax (631) 396-7575

3/20/00

LEAKAGE CURRENT CHARACTERISTIC

PRODUCTS: RADIAL LEADED ALUMINUM ELECTROLYTIC CAPACITORS
SERIES: NLE

TYPICAL LEAKAGE CURRENT
P/N: NLE101M10V (100uF @ 10VDC)
DC: 9918



ISO 9002 REGISTERED



NIC COMPONENTS CORP.
 70 Maxess Road • Melville, New York 11747
 (631) 396-7500 • Fax (631) 396-7575

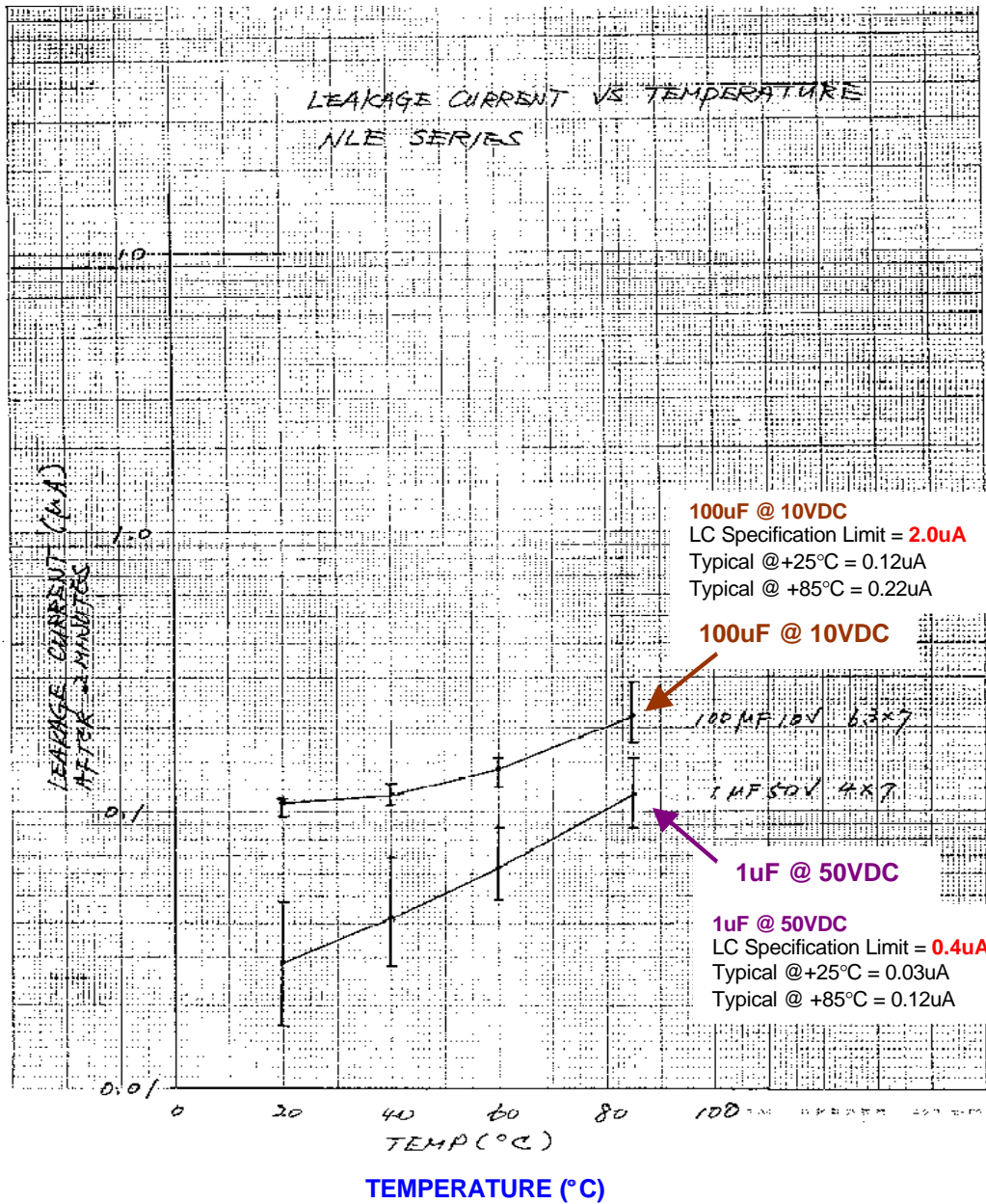
3/20/00

LEAKAGE CURRENT CHARACTERISTIC

PRODUCTS: RADIAL LEADED ALUMINUM ELECTROLYTIC CAPACITORS
SERIES: NLE

LEAKAGE CURRENT OVER TEMPERATURE : NLE SERIES

TYPICAL LEAKAGE CURRENT (uA) after 2 minutes



ISO 9002 REGISTERED



NIC COMPONENTS CORP.

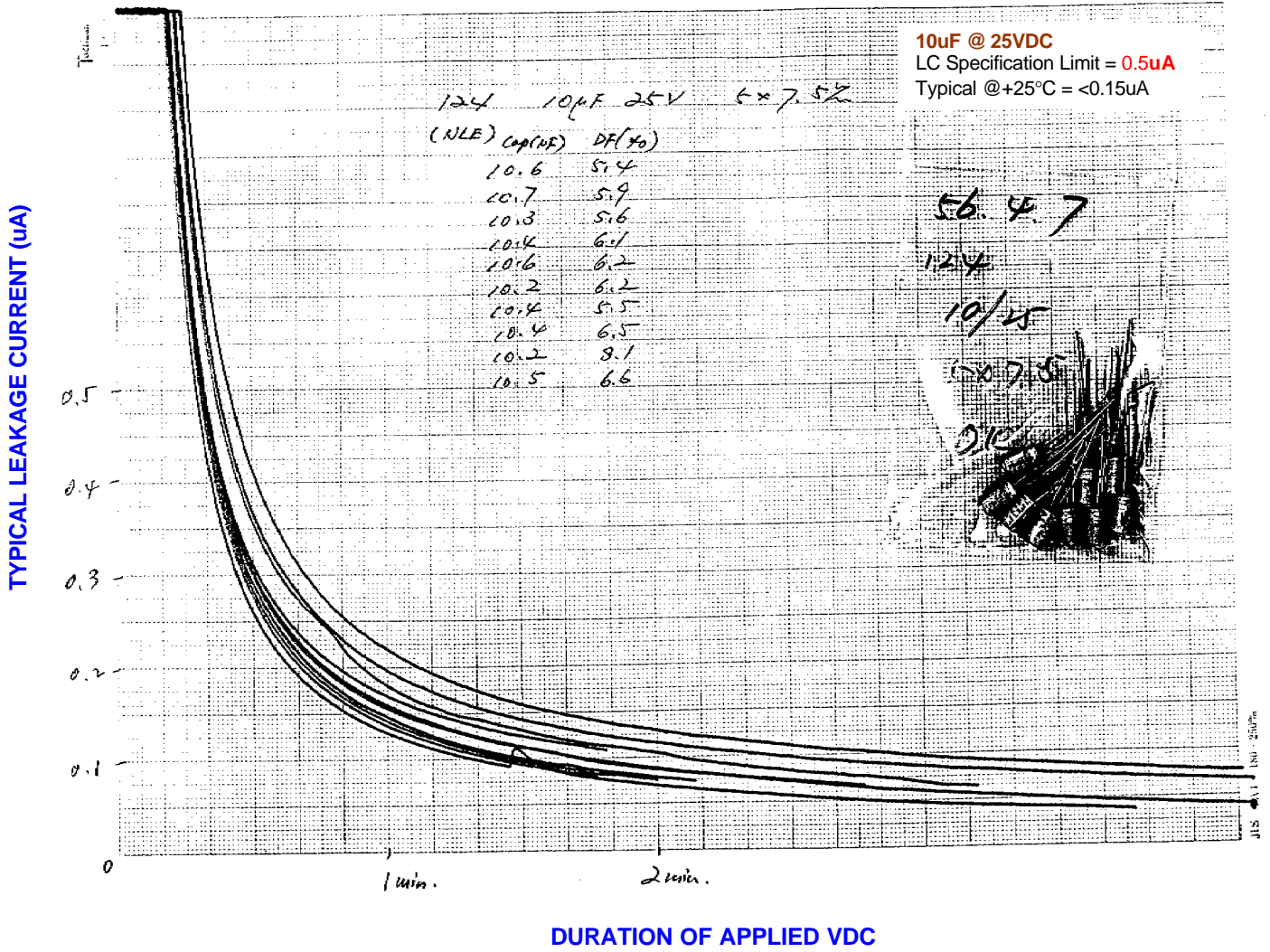
70 Maxess Road • Melville, New York 11747

(631) 396-7500 • Fax (631) 396-7575

LEAKAGE CURRENT CHARACTERISTIC

PRODUCTS: RADIAL LEADED ALUMINUM ELECTROLYTIC CAPACITORS
SERIES: NLE

LEAKAGE CURRENT VARIATION WITHIN LOT : NLE SERIES



ISO 9002 REGISTERED