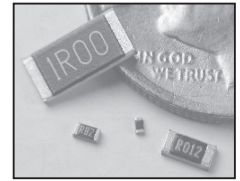


FEATURES

- SURFACE MOUNTABLE 0402 ~ 7520 CASE SIZE
- AEC-Q200 QUALIFIED
- ANTI-SULFUR CONSTRUCTION; MEETS ASTM-B-809-95 H2S, +50°C, 1,000 HOURS
- MEETS +85°C/85%RH BIASED HUMIDITY, 1,000 HOURS
- PRECISION TOLERANCE (±1%)
- POWER RATINGS UP TO 3 WATTS
- Pb-FREE REFLOW COMPATIBLE

RoHS Compliant
includes all homogeneous materials

*See Part Number System for Details



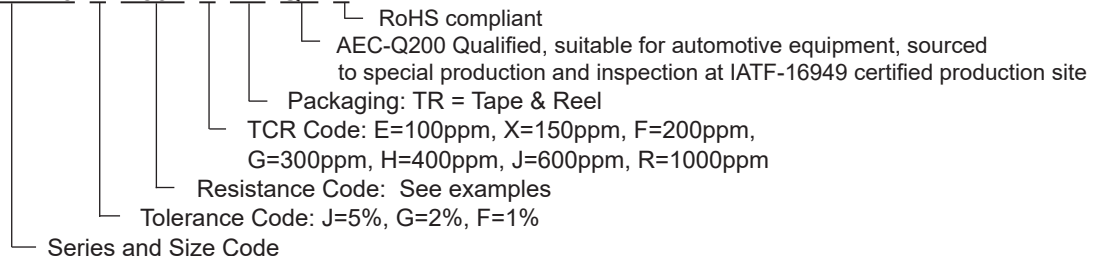
CHARACTERISTICS

| Type | EIA Size | Power Rating at 70°C | Resistance Tolerance | Temperature Coefficient (°C) | Resistance Range | Resistance Range (Codes) | Operating Temp. Range (°C) |
|----------|----------|----------------------|----------------------------|------------------------------|------------------|--------------------------|----------------------------|
| NCST-A04 | 0402 | 1/16W | 1% (F) 2% (G) 5% (J) | ±200ppm (F) | 510mΩ ~ 1Ω | R510 ~ 1R00 | -55°C ~ +155°C |
| | | | | ±300ppm (G) | 102mΩ ~ 500mΩ | R102 ~ R500 | |
| | | | | ±400ppm (H) | 50mΩ ~ 100mΩ | R050 ~ R100 | |
| NCST-A06 | 0603 | 1/10W | 1% (F) 2% (G) 5% (J) | ±200ppm (F) | 301mΩ ~ 1Ω | R301 ~ 1R00 | |
| | | | | ±300ppm (G) | 102mΩ ~ 300mΩ | R102 ~ R300 | |
| | | | | ±400ppm (H) | 51mΩ ~ 100mΩ | R051 ~ R100 | |
| | | | | ±600ppm (J) | 20mΩ ~ 50mΩ | R020 ~ R050 | |
| NCST-A10 | 0805 | 1/8W | 1% (F) 2% (G) 5% (J) | ±200ppm (F) | 200mΩ ~ 1Ω | R200 ~ 1R00 | |
| | | | | ±300ppm (G) | 102mΩ ~ 196mΩ | R102 ~ R196 | |
| | | | | ±400ppm (H) | 51mΩ ~ 100mΩ | R051 ~ R100 | |
| | | | | ±600ppm (J) | 20mΩ ~ 50mΩ | R020 ~ R050 | |
| NCST-A12 | 1206 | 1/4W | 1% (F) 2% (G) 5% (J) | ±200ppm (F) | 100mΩ ~ 1Ω | R100 ~ 1R00 | |
| | | | | ±300ppm (G) | 51mΩ ~ 91mΩ | R051 ~ R091 | |
| | | | | ±400ppm (H) | 21mΩ ~ 50mΩ | R021 ~ R050 | |
| | | | | ±600ppm (J) | 10mΩ ~ 20mΩ | R010 ~ R020 | |
| NCST-A25 | 1210 | 1/2W | 1% (F) 2% (G) 5% (J) | ±200ppm (F) | 100mΩ ~ 1Ω | R100 ~ 1R00 | |
| | | | | ±300ppm (G) | 51mΩ ~ 91mΩ | R051 ~ R091 | |
| | | | | ±400ppm (H) | 21mΩ ~ 50mΩ | R021 ~ R050 | |
| | | | | ±600ppm (J) | 10mΩ ~ 20mΩ | R010 ~ R020 | |
| NCST-A50 | 2010 | 3/4W | 1% (F) 2% (G) 5% (J) | ±200ppm (F) | 100mΩ ~ 1Ω | R100 ~ 1R00 | |
| | | | | ±300ppm (G) | 51mΩ ~ 91mΩ | R051 ~ R091 | |
| | | | | ±400ppm (H) | 21mΩ ~ 50mΩ | R021 ~ R050 | |
| | | | | ±600ppm (J) | 10mΩ ~ 20mΩ | R010 ~ R020 | |

Sizes and Values Table Continues on Next Page

PART NUMBER SYSTEM

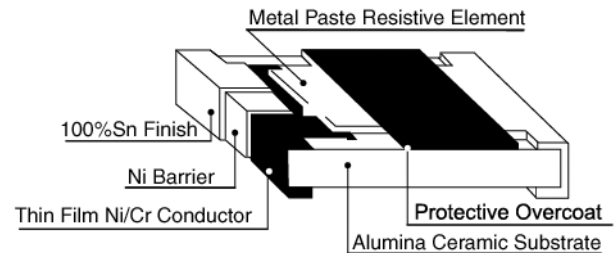
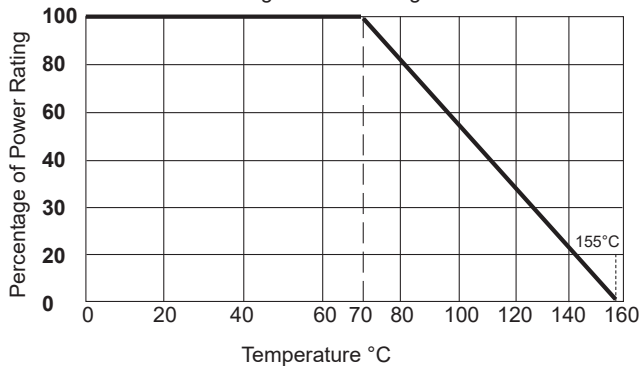
NCST-A10 F R501 F TR QY E



CHARACTERISTICS

| Type | EIA Size | Power Rating at 70°C | Resistance Tolerance | Temperature Coefficient (°C) | Resistance Range | Resistance Range (Codes) | Operating Temp. Range (°C) | |
|------------|----------------|----------------------|----------------------------|------------------------------|------------------|--------------------------|----------------------------|-------------|
| NCST-A100 | 2512 | 1W | 1% (F) 2% (G) 5% (J) | ±200ppm (F) | 100mΩ ~ 1Ω | R100 ~ 1R00 | -55°C ~ +155°C | |
| | | | | ±300ppm (G) | 51mΩ ~ 91mΩ | R051 ~ R091 | | |
| | | | | ±400ppm (H) | 21mΩ ~ 50mΩ | R021 ~ R050 | | |
| | | | | ±600ppm (J) | 10mΩ ~ 20mΩ | R010 ~ R020 | | |
| NCST-A100L | 3720 (0815) | 1W | 1% (F) 2% (G) 5% (J) | ±100ppm (E) | 100mΩ ~ 500mΩ | R100 ~ R500 | | |
| | | | | ±150ppm (X) | 20mΩ ~ 500mΩ | R020 ~ R500 | | |
| | | | | ±300ppm (G) | 10mΩ ~ 18mΩ | R010 ~ R018 | | |
| NCST-A200 | 7520 (0830) | 2W | 2% (G) 5% (J) | ±300ppm (G) | 1mΩ ~ 4mΩ | R001 ~ R004 | | |
| | | | | 1% (F) 2% (G) 5% (J) | ±150ppm (X) | 11mΩ ~ 350mΩ | | R011 ~ R350 |
| | | | | | ±200ppm (F) | 5mΩ ~ 10mΩ | | R005 ~ R010 |
| NCST-A300 | 1225 | 3W | 1% (F) 2% (G) 5% (J) | ±100ppm (E) | 33mΩ ~ 8.0Ω | R033 ~ 8R00 | | |
| | | | | ±150ppm (X) | 21mΩ ~ 30mΩ | R021 ~ R030 | | |
| | | | | ±200ppm (F) | 6mΩ ~ 20mΩ | R006 ~ R020 | | |
| | | | | ±300ppm (G) | 3mΩ ~ 5mΩ | R003 ~ R005 | | |

Power Derating Curve: For operation above 70°C, power rating must be derated according to the following chart:



ENVIRONMENTAL CHARACTERISTICS

| Item | Specification | Test Method |
|---------------------------------------|--|--|
| Temperature Coefficient of Resistance | As Specified | JIS-C-5201-1 4.8, IEC-60115-1 4.8 -55°C ~ +125°C, 25°C reference |
| Short Time Overload | ±0.5% + 0.05Ω | JIS-C-5201-1 4.13, IEC-60115-1 4.13 RCWV * 2.5 or max. overload voltage whichever is less for 5 seconds |
| | For higher power parts ±1.0% + 0.05Ω | |
| Insulation Resistance | >10000MΩ | JIS-C-5201-1 4.6, IEC-60115-1 4.6 Maximum overload voltage for 1 minute |
| Load Life | ±1% + 0.05Ω | MIL-STD-202 Method 108 Condition D Steady State TA=+125°C at derated power. Measurement 24±4 hours after test |
| Voltage Proof | No breakdown or flashover | JIS-C-5201-1 4.7, IEC-60115-1 4.7 1.42 times maximum operating voltage for 1 minute |
| Biased Humidity | ±1.0% + 0.05Ω | MIL-STD-202 Method 103 1000 hours +85°C/85% RH at 10% of operating power |
| High Temperature Exposure | ±0.5% + 0.05Ω | MIL-STD-202 Method 108 1000 hours +155°C |
| Solderability | 95% min. coverage | JIS-C-5201-1 4.17, IEC-60115-1 4.17 J-STD-002 +245°C ±5°C for 3 sec. |
| Resistance to Soldering Heat | ±0.5% + 0.05Ω | MIL-STD-202 Method 210 +260°C ±5°C for 10 sec. |
| Leaching | Individual leaching area ≤5% Total leaching area ≤10% | JIS-C-5201-1 4.18, IEC-60068-2-58 8.2.1 +260°C ±5°C for 30 sec. |
| Board Flexing | ±1% + 0.05Ω | AEC-Q200-005 Bend once for 60 seconds 2mm for 2010 & 2512, Other sizes 3mm |
| Terminal Strength | None broken | AEC-Q200-006 Force of 1.8kg for 60 seconds |
| Temperature Cycling | ±0.5% + 0.05Ω | JESD22 Method JA-104 -55°C ~ +125°C, 1000 cycles |
| Mechanic Shock | ±0.25% + 0.05Ω | MIL-STD-202 Method 213 Wave Form: Tolerance for half sine shock pulse. Peak value is 100g's. Normal duration (D) is 6. |
| Vibration | ±0.5% + 0.05Ω | MIL-STD-202 Method 204 5g's for 20 min., 12 cycles each of 3 orientations 10 ~ 2000Hz |
| ESD | ±1.0% + 0.05Ω | AEC-Q200-002 Human Body Method, 2KV |
| Resistance to Solvents | No visible damage on appearance or marking | MIL-STD-202 Method 215 Add Aqueous wash chemical - OKEM Clean or equivalent. Do not use banned solvents. |
| Flammability | No ignition of the tissue paper or scorching of the pinewood board | UL-94 V-0 or V-1 are acceptable. Electrical test not required |
| Sulfur Test | ±0.5% + 0.05Ω | ASTM-B-809-95 H2S, 50±2°C, 91 ~ 93% RH, no power for 1,000 hours |

AVAILABLE VALUES AND PART NUMBERS

| | Available Value Range | Part Number | Resistance Value (mΩ) | Available TCR |
|-----------------------|-----------------------|-----------------------|-----------------------|---------------|
| 0402 Size 1/16W | 50mΩ ~ 100mΩ | NCST-A04 _ R050HTRQYF | 50 | ±400ppm (H) |
| | | ↓ | ↓ | |
| | 101mΩ ~ 500mΩ | NCST-A04 _ R100HTRQYF | 100 | ±300ppm (G) |
| | | NCST-A04 _ R102GTRQYF | 102 | |
| | 501mΩ ~ 1.0Ω | NCST-A04 _ R500FTRQYF | 500 | ±200ppm (F) |
| | | NCST-A04 _ R510FTRQYF | 510 | |
| | | NCST-A04 _ 1R00FTRQYF | 1,000 | |
| | Available Value Range | Part Number | Resistance Value (mΩ) | Available TCR |
| 0603 Size 1/10W | 20mΩ ~ 50mΩ | NCST-A06 _ R020JTRQYF | 20 | ±600ppm (J) |
| | | ↓ | ↓ | |
| | 51mΩ ~ 100mΩ | NCST-A06 _ R050JTRQYF | 50 | ±400ppm (H) |
| | | NCST-A06 _ R051HTRQYF | 51 | |
| | 102mΩ ~ 500mΩ | NCST-A06 _ R100HTRQYF | 100 | ±300ppm (G) |
| | | NCST-A06 _ R102GTRQYF | 102 | |
| | 301mΩ ~ 1.0Ω | NCST-A06 _ R300GTRQYF | 300 | ±200ppm (F) |
| | | NCST-A06 _ R301FTRQYF | 301 | |
| | | NCST-A06 _ 1R00FTRQYF | 1,000 | |
| | Available Value Range | Part Number | Resistance Value (mΩ) | Available TCR |
| 0805 Size 1/8W | 20mΩ ~ 50mΩ | NCST-A10 _ R020JTRQYF | 20 | ±600ppm (J) |
| | | ↓ | ↓ | |
| | 51mΩ ~ 100mΩ | NCST-A10 _ R050JTRQYF | 50 | ±400ppm (H) |
| | | NCST-A10 _ R051HTRQYF | 51 | |
| | 102mΩ ~ 196mΩ | NCST-A10 _ R100HTRQYF | 100 | ±300ppm (G) |
| | | NCST-A10 _ R102GTRQYF | 102 | |
| | 200mΩ ~ 1.0Ω | NCST-A10 _ R196GTRQYF | 196 | ±200ppm (F) |
| | | NCST-A10 _ R200FTRQYF | 200 | |
| | | NCST-A10 _ 1R00FTRQYF | 1,000 | |

*Tolerance Codes: 1% (F), 2% (G) or 5% (J)

TABLE CONTINUES ON NEXT PAGE



AVAILABLE VALUES AND PART NUMBERS

| | Available Value Range | Part Number | Resistance Value (mΩ) | Available TCR |
|-----------------------|-----------------------|-----------------------|-----------------------|---------------|
| 1206 Size 1/4W | 10mΩ ~ 20mΩ | NCST-A12 * R010JTRQYF | 10 | ±600ppm (J) |
| | | ↓ | ↓ | |
| | | NCST-A12 * R020JTRQYF | 20 | |
| | 21mΩ ~ 50mΩ | NCST-A12 * R021HTRQYF | 21 | ±400ppm (H) |
| | | ↓ | ↓ | |
| | | NCST-A12 * R050HTRQYF | 50 | |
| | 51mΩ ~ 91mΩ | NCST-A12 * R051GTRQYF | 51 | ±300ppm (G) |
| | | ↓ | ↓ | |
| | | NCST-A12 * R91GTRQYF | 91 | |
| | 100mΩ ~ 1.0Ω | NCST-A12 * R100FTRQYF | 100 | ±200ppm (F) |
| ↓ | | ↓ | | |
| NCST-A12 * 1R00FTRQYF | | 1,000 | | |
| | Available Value Range | Part Number | Resistance Value (mΩ) | Available TCR |
| 1210 Size 1/2W | 10mΩ ~ 20mΩ | NCST-A25 * R010JTRQYF | 10 | ±600ppm (J) |
| | | ↓ | ↓ | |
| | | NCST-A25 * R020JTRQYF | 20 | |
| | 21mΩ ~ 50mΩ | NCST-A25 * R021HTRQYF | 21 | ±400ppm (H) |
| | | ↓ | ↓ | |
| | | NCST-A25 * R050HTRQYF | 50 | |
| | 51mΩ ~ 91mΩ | NCST-A25 * R051GTRQYF | 51 | ±300ppm (G) |
| | | ↓ | ↓ | |
| | | NCST-A25 * R91GTRQYF | 91 | |
| | 100mΩ ~ 1.0Ω | NCST-A25 * R100FTRQYF | 100 | ±200ppm (F) |
| ↓ | | ↓ | | |
| NCST-A25 * 1R00FTRQYF | | 1,000 | | |
| | Available Value Range | Part Number | Resistance Value (mΩ) | Available TCR |
| 2010 Size 3/4W | 10mΩ ~ 20mΩ | NCST-A50 * R010JTRQYF | 10 | ±600ppm (J) |
| | | ↓ | ↓ | |
| | | NCST-A50 * R020JTRQYF | 20 | |
| | 21mΩ ~ 50mΩ | NCST-A50 * R021HTRQYF | 21 | ±400ppm (H) |
| | | ↓ | ↓ | |
| | | NCST-A50 * R050HTRQYF | 50 | |
| | 51mΩ ~ 91mΩ | NCST-A50 * R051GTRQYF | 51 | ±300ppm (G) |
| | | ↓ | ↓ | |
| | | NCST-A50 * R91GTRQYF | 91 | |
| | 100mΩ ~ 1.0Ω | NCST-A50 * R100FTRQYF | 100 | ±200ppm (F) |
| ↓ | | ↓ | | |
| NCST-A50 * 1R00FTRQYF | | 1,000 | | |

*Tolerance Codes: 1% (F), 2% (G) or 5% (J)

TABLE CONTINUES ON NEXT PAGE



AVAILABLE VALUES AND PART NUMBERS

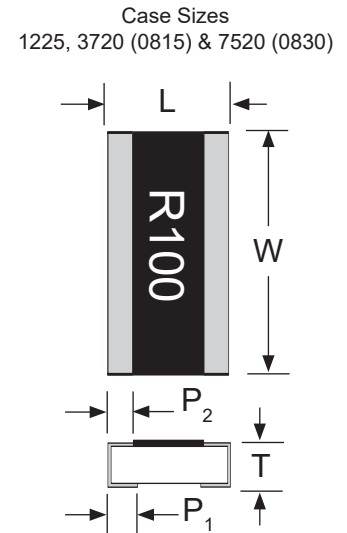
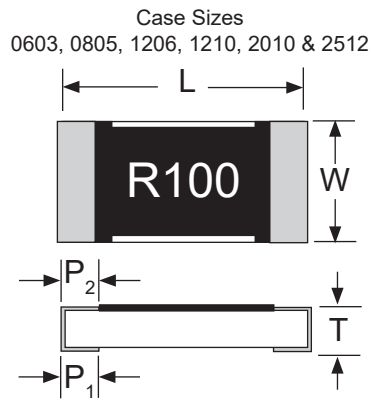
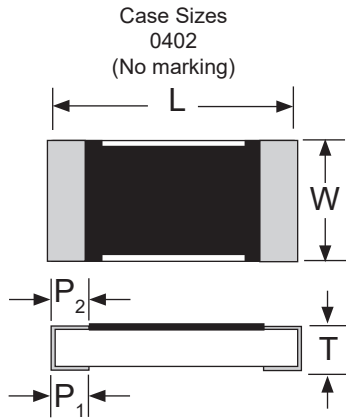
| | Available Value Range | Part Number | Resistance Value (mΩ) | Available TCR |
|------------------------------|-----------------------|-------------------------|-----------------------|---------------|
| 2512 Size 1W | 10mΩ ~ 20mΩ | NCST-A100_*_R010JTRQYF | 10 | ±600ppm (J) |
| | | ↓ | ↓ | |
| | | NCST-A100_*_R020JTRQYF | 20 | |
| | 21mΩ ~ 50mΩ | NCST-A100_*_R021HTRQYF | 21 | ±400ppm (H) |
| | | ↓ | ↓ | |
| | | NCST-A100_*_R050HTRQYF | 50 | |
| | 51mΩ ~ 91mΩ | NCST-A100_*_R051GTRQYF | 51 | ±300ppm (G) |
| | | ↓ | ↓ | |
| | | NCST-A100_*_R91GTRQYF | 91 | |
| | 100mΩ ~ 1.0Ω | NCST-A100_*_R100FTRQYF | 100 | ±200ppm (F) |
| ↓ | | ↓ | | |
| NCST-A100_*_R1000FTRQYF | | 1,000 | | |
| | Available Value Range | Part Number | Resistance Value (mΩ) | Available TCR |
| 3720 (0815) Size 1W | 10mΩ ~ 18mΩ | NCST-A100L_*_R010GTRQYF | 10 | ±300ppm (G) |
| | | ↓ | ↓ | |
| | | NCST-A100L_*_R018GTRQYF | 18 | |
| | 20mΩ ~ 500Ω | NCST-A100L_*_R020XTRQYF | 20 | ±150ppm (X) |
| | | ↓ | ↓ | |
| | 100mΩ ~ 500mΩ | NCST-A100L_*_R500XTRQYF | 500 | ±100ppm (E) |
| | | ↓ | ↓ | |
| NCST-A100_*_R100ETRQYF | | 100 | | |
| 7520 (0830) Size 2W | 1mΩ ~ 4mΩ | NCST-A200_*_R001GTRQYF | 1 | ±300ppm (G) |
| | | ↓ | ↓ | |
| | | NCST-A200_*_R004GTRQYF | 4 | |
| | 5mΩ ~ 10mΩ | NCST-A200_*_R005FTRQYF | 5 | ±200ppm (F) |
| | | ↓ | ↓ | |
| | | NCST-A200_*_R010FTRQYF | 10 | |
| | 11mΩ ~ 350mΩ | NCST-A200_*_R011XTRQYF | 11 | ±150ppm (X) |
| ↓ | | ↓ | | |
| NCST-A200_*_R350XTRQYF | 350 | | | |
| | Available Value Range | Part Number | Resistance Value (mΩ) | Available TCR |
| 1225 Size 3W | 1mΩ ~ 4mΩ | NCST-A300_*_R003GTRQYF | 3 | ±300ppm (G) |
| | | ↓ | ↓ | |
| | | NCST-A300_*_R005GTRQYF | 5 | |
| | 5mΩ ~ 10mΩ | NCST-A300_*_R006FTRQYF | 6 | ±200ppm (F) |
| | | ↓ | ↓ | |
| | | NCST-A300_*_R020FTRQYF | 20 | |
| | 11mΩ ~ 350mΩ | NCST-A300_*_R021XTRQYF | 21 | ±150ppm (X) |
| | | ↓ | ↓ | |
| | | NCST-A300_*_R030XTRQYF | 30 | |
| | 33mΩ ~ 8000mΩ | NCST-A300_*_R033ETRQYF | 33 | ±100ppm (E) |
| ↓ | | ↓ | | |
| NCST-A300_*_R8000ETRQYF | | 8,000 | | |

*Tolerance Codes: 1% (F), 2% (G) or 5% (J)



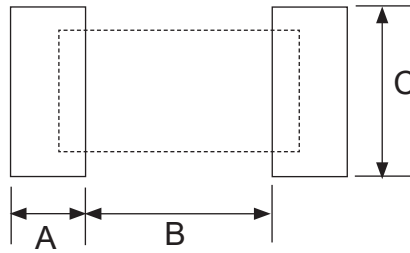
DIMENSIONS (mm)

| Type | Case Size | Length (L) | Width (W) | Thickness (T) | Termination Width (P ₁) | Termination Width (P ₂) |
|------------|-------------|-------------|-------------|---------------|-------------------------------------|-------------------------------------|
| NCST-A04 | 0402 | 1.00 ± 0.05 | 0.50 ± 0.05 | 0.32 ± 0.05 | 0.25 ± 0.10 | 0.20 ± 0.10 |
| NCST-A06 | 0603 | 1.60 ± 0.10 | 0.80 ± 0.10 | 0.45 ± 0.10 | 0.30 ± 0.20 | 0.30 ± 0.20 |
| NCST-A10 | 0805 | 2.00 ± 0.10 | 1.25 ± 0.10 | 0.55 ± 0.10 | 0.30 ± 0.20 | 0.40 ± 0.25 |
| NCST-A12 | 1206 | 3.10 ± 0.10 | 1.55 ± 0.10 | 0.55 ± 0.10 | 0.50 ± 0.30 | 0.40 ± 0.25 |
| NCST-A25 | 1210 | 3.10 ± 0.10 | 2.60 ± 0.15 | 0.55 ± 0.10 | 0.50 ± 0.30 | 0.50 ± 0.25 |
| NCST-A50 | 2010 | 5.00 ± 0.20 | 2.50 ± 0.15 | 0.60 ± 0.15 | 0.60 ± 0.30 | 0.50 ± 0.25 |
| NCST-A100 | 2512 | 6.35 ± 0.20 | 3.10 ± 0.15 | 0.60 ± 0.10 | 0.60 ± 0.30 | 0.55 ± 0.25 |
| NCST-A100L | 3720 (0815) | 2.00 ± 0.20 | 3.75 ± 0.20 | 0.60 ± 0.10 | 0.40 ± 0.20 | 0.40 ± 0.20 |
| NCST-A200 | 7520 (0830) | 2.00 ± 0.20 | 7.50 ± 0.30 | 0.60 ± 0.10 | 0.40 ± 0.20 | 0.40 ± 0.20 |
| NCST-A300 | 1225 | 3.20 ± 0.15 | 6.45 ± 0.15 | 0.90 ± 0.15 | 0.60 ± 0.30 | 0.80 ± 0.25 |



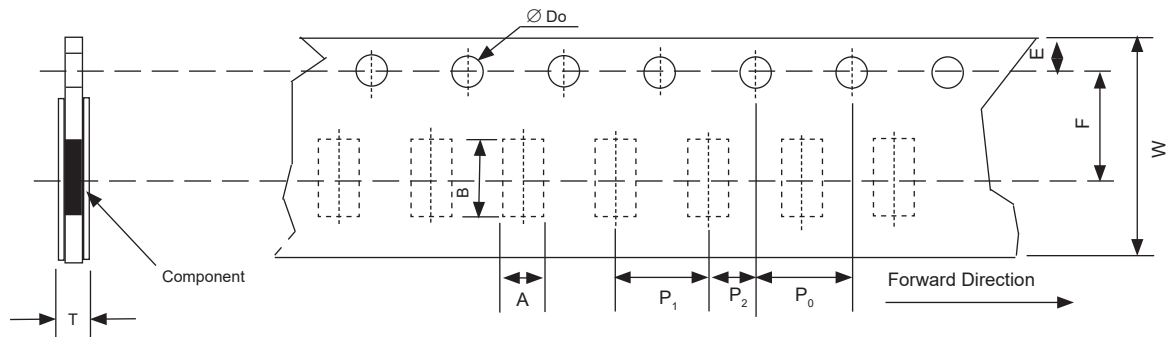
LAND PATTERN DIM. (mm)

| Size | A | B | C |
|------------|------|------|------------|
| NCST-A04 | 0.50 | 0.50 | 0.60 ± 0.2 |
| NCST-A06 | 1.00 | 0.80 | 0.90 ± 0.2 |
| NCST-A10 | 1.00 | 1.00 | 1.35 ± 0.2 |
| NCST-A12 | 1.15 | 2.00 | 1.70 ± 0.2 |
| NCST-A25 | 1.15 | 2.00 | 2.50 ± 0.2 |
| NCST-A50 | 1.40 | 3.60 | 2.50 ± 0.2 |
| NCST-A100 | 1.60 | 4.90 | 3.20 ± 0.2 |
| NCST-A100L | 1.80 | 1.00 | 3.90 ± 0.2 |
| NCST-A200 | 1.80 | 1.00 | 7.60 ± 0.2 |
| NCST-A300 | 2.00 | 1.20 | 7.00 ± 0.2 |



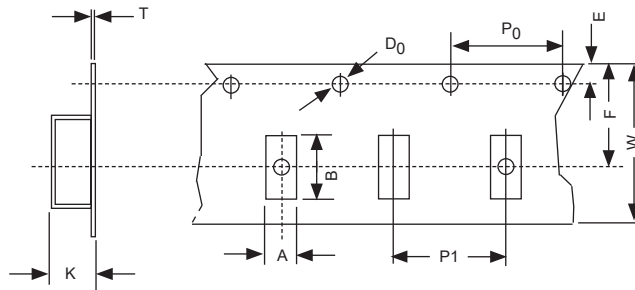
PAPER CARRIER TAPE DIMENSIONS (mm)

| Type | A | B | W | F | E | P ₁ | P ₂ | P ₀ | φD | T |
|----------|-------------|-------------|-------------|-------------|-------------|----------------|----------------|----------------|--------------|-------------|
| NCST-A04 | 0.65 ± 0.10 | 1.15 ± 0.10 | 8.00 ± 0.20 | 3.50 ± 0.05 | 1.75 ± 0.10 | 2.00 ± 0.05 | 2.00 ± 0.05 | 4.00 ± 0.10 | 1.50 +0.1/-0 | 0.45 ± 0.10 |
| NCST-A06 | 1.10 ± 0.10 | 1.90 ± 0.10 | | | | 0.70 ± 0.10 | | | | |
| NCST-A10 | 1.60 ± 0.10 | 2.40 ± 0.20 | | | | 0.85 ± 0.10 | | | | |
| NCST-A12 | 1.90 ± 0.10 | 3.50 ± 0.20 | | | | | | | | |
| NCST-A25 | 2.90 ± 0.10 | 3.50 ± 0.20 | | | | | | | | |



EMBOSSED PLASTIC CARRIER DIMENSIONS (mm)

| Type | A | B | W | F | K | E | P ₁ | P ₂ | P ₀ | φD _o | T |
|------------|------------|------------|------------|------------|------------|------------|----------------|----------------|----------------|-----------------|------------|
| NCST-A50 | 2.80 ±0.10 | 5.50 ±0.10 | 12.0 ±0.30 | 5.50 ±0.05 | 1.00 ±0.20 | 1.75 ±0.10 | 4.00 ±0.10 | 2.00 ±0.05 | 4.00 ±0.05 | 1.50 ±0.10 | 0.80 ±0.10 |
| NCST-A100 | 3.50 ±0.10 | 6.70 ±0.10 | | | | | | | | | |
| NCST-A100L | 2.50 ±0.20 | 4.50 ±0.20 | | | | | | | | | |
| NCST-A200 | 2.50 ±0.20 | 8.30 ±0.20 | 12.0 ±0.30 | 7.80 ±0.05 | 1.20 ±0.20 | | | | | | |
| NCST-A300 | 3.38 ±0.10 | 6.68 ±0.10 | 12.0 ±0.30 | 5.50 ±0.10 | 1.45 ±0.20 | | | | | | |



REEL DIMENSIONS (mm) AND QUANTITY

| Type | A | B | C | W | Quantity |
|------------|-----------|---------|-----------|----------|----------|
| NCST-A04 | 178 ±1.0 | 60 +1.0 | 13.5 ±0.7 | 9.5 ±0.1 | 10,000 |
| NCST-A06 | | | | | 5,000 |
| NCST-A10 | | | | | |
| NCST-A12 | | | | | |
| NCST-A25 | | | | | |
| NCST-A50 | 13.5 ±1.0 | | | | |
| NCST-A100 | 13.5 ±1.0 | | | | |
| NCST-A100L | 13.5 ±1.0 | 2,000 | | | |
| NCST-A200 | 17.5 ±1.0 | 2,000 | | | |
| NCST-A300 | 13.5 ±1.0 | 2,000 | | | |

