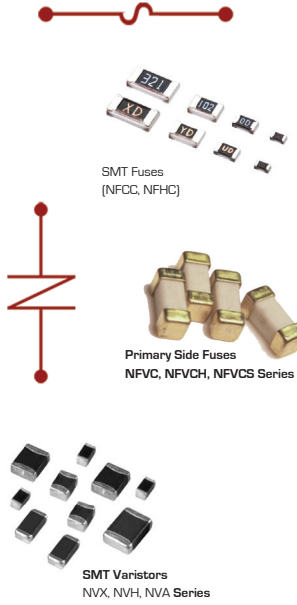


NIC Components SMT & LDD Circuit Protection Components

Select your circuit protection devices from NIC's Offering of 21 Series in LDD & SMT constructions.

- Circuit Protection Applications**
- ◆ Over-current Protection
 - ◆ Over-voltage Protection
 - ◆ Power Supplies & Modules
 - ◆ Power Adapters (AC, DC, AC/DC)
 - ◆ Lighting
 - ◆ Office Equipment
 - ◆ Telecom Equipment
 - ◆ Industrial Equipment

- Circuit Protection Co-Sells**
- ◆ High Voltage Capacitors
 - ◆ High Reliability Film Capacitors
 - ◆ Power Transformers
 - ◆ Power Inductors
 - ◆ High Voltage Resistors



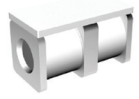
Series	Product	Type	Size Range	Current Ratings	Voltage Rating	Time/Current
NFCC	Secondary Protection Thick Film Safety Fuses	Low Current	0402 ~ 1206	0.2A ~ 5A	24 ~ 50Vdc	5s under 200%
NFHC		High Current	0402 ~ 1206	0.2A ~ 5A	24 ~ 50Vdc	5s under 250%
NFVC-F	Primary Protection Safety Fuses	High Current	6125	1.0A ~ 20A	65 & 125Vac	5s under 200% ~ 20s under 200%
NFVCH		High Voltage	6125	1.0A ~ 5A	250Vac	120s under 200%
NFVC-S	UL Certified	Slow Blow	6125	1.0A ~ 5A	125Vac	120s under 200%

Series	Product	Type	Size Range	Working Voltages	Varistor Voltages	Min. Capacitance
NVX	Multilayer Chip Varistors General, ESD, & High Speed Styles	Standard Range	0402 ~ 1206	5.5 ~ 48Vdc	10 ~ 67V	3pF
NVH		High Voltage	1206 ~ 2220	5.5 ~ 100Vdc	10 ~ 132V	100pF
NVA		SMT Array Chip	0805 ~ 0825	5.5 ~ 18Vdc	10 ~ 28V	10pF

Series	Product	Type	Sizes	Max Vdc Range	Io Current	Operating Range
NRD	Surface Mount Rectifier Diodes	Silicon	SMA	50Vdc ~ 1KVdc	1A	-60°C ~ +150°C
NSD		Schottky		20Vdc ~ 60Vdc	1A ~ 2A	-55°C ~ +150°C
NDTV	TVS Diodes	Voltage Suppressors	SMA, SMB, SMC, SMD	5.0Vdc ~ 75Vdc	1A, 2A	-55°C ~ +150°C

Search with QuickBUILDER

- ◆ Over 1,000 components to search
- ◆ Compare up to 5 results Side-By-Side
- ◆ Sort by Series Focus (color)



Gas Discharge Tubes NGTD NGTM Series



NPXH Series

Series	Product	# of Terminals	Size	Breakdown Voltage (100V/S)	Impulse Spark-Over Voltage (1kV/us)	Impulse Discharge Current (8/20uS)	Arc Voltage (1A)	Applications
NGTA	Surface Mount Gas Discharge Tubes	2	1812	150V ~ 400V	≤650V ~ ≤750V	1,000A	8V ~ 15V	Coaxial, RS485, RS232, RS422, DC12V, AC24V, xDSL
NGTC		2	1812	140V ~ 780V	≤750V ~ ≤1,200V	2,000A		RS485, RS232, RS422, DC12V, AC24V, xDSL, Ethernet
NGTD		3	3020	90V ~ 1,000V	≤700V ~ ≤1,800V	5,000A		RS485, RS232, RS422, DC12V, AC24V, xDSL, NEBS
NGTF		2	2016	90V ~ 1,200V	≤650V ~ ≤2,000V	5,000A		RS485, RS232, RS422, DC12V, AC24V, AC Power
NGTM		2	2332	90V ~ 3,600V	≤600V ~ ≤5,000V	20,000A		DC Power, AC Power

Series	Description	Series Type	Safety Rating	Operating Range	Capacitance Range	Voltage Range
NPXH	Radial Film Safety Capacitors Metallized Polypropylene Interference Suppression	Extended Values	X2	-40°C ~ 110°C	0.001uF ~ 10uF	300 ~ 330Vac
NPXI		Superior Performance		-40°C ~ 110°C	0.01uF ~ 10uF	300 ~ 330Vac
NPXF		Standard Range	X1	-40°C ~ 110°C	0.001uF ~ 10uF	440 ~ 480Vac
NPYT	Radial Film Y1 & Y2 Safety Class	Standard Range	Y1 - Y2	-40°C ~ 110°C	470pF ~ 4.7uF	250 ~ 500Vac

NIC NIC Components Corp.

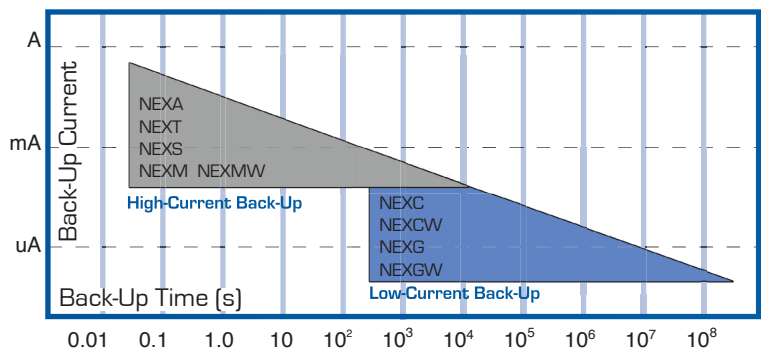
www.NICcomp.com/protection

North America Tel: (631) 396-7500 sales@niccomp.com
 Europe Tel: +44 (1280) 813 737 niesales@niccomp.com
 SE Asia Tel: +65 6844-1575 niasales@niccomp.com.sg

NIC Components Double Layer Capacitor Offering [EDLCs]

Select your Double Layer Capacitor from NIC's Offering of 9 Series in LDD & SMT constructions.

Series Range By Back-up Current & Time



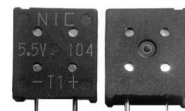
Double Layer Applications -

Backup power source for electric circuit operations and memory devices during the power source interruption, found in:

- ◇ Control systems
- ◇ Monitoring: Medical, Smart Grid and Location
- ◇ Communication equipment
- ◇ Office automation equipment
- ◇ Test & Instrumentation



NEXT Series



NEXM Series



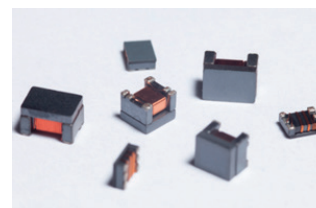
NECX Series



Series	Mount	Type	Description	Capacitance Range	Voltage Range	Max Current @ 30 Min.
NEXC	SMT	Low-Current Backup -25°C ~ 70°C Operating Range & -25°C ~ 85°C Operating Range	V-Chip SMT Design Reflow Capable	0.047F ~ 1F	3.5 ~ 5.5V	1.5mA
NEXG	LDD		Low-Profile Design	0.01F ~ 4.7F	5.5V	7.1mA
NEXM	LDD		Molded Case Design	0.01F ~ 0.22F	3.5 ~ 6.5V	0.33mA
NEXGW	LDD		Molded Case Design, 85°C Rated	0.47F ~ 2.2F	3.5 ~ 5.5V	3.3mA
NEXMW	LDD		Extended Range, 85°C Rated	0.047F ~ 0.47F	3.5 ~ 5.5V	0.15mA
NEXCW	SMT		V-Chip SMT Design 260°C Reflow Capable	0.047F ~ 0.47F	3.5 ~ 5.5V	0.42mA
NEXA	LDD	High-Current Backup -25°C ~ 70°C Operating Range & -40°C ~ 85°C Operating Range	Low-Profile Design	0.022F ~ 1F	5.5 ~ 11V	1.5mA
NEXS	LDD		Extended Range	0.022F ~ 5F	5.5 ~ 12V	18mA
NEXT	LDD		Wide Temperature Range	0.1F ~ 5.6F	5.5V	8.4mA

NIC Components LAN Transformers

- ◇ 10/100 Ethernet Applications
- ◇ Gigabit Ethernet Applications
- ◇ Single 2.5G Ethernet Applications
- ◇ Single 10G Ethernet Applications
- ◇ Dual 1G Ethernet Applications
- ◇ IEC 61000-4-5 10/700us 4KV (CM)
- ◇ IEC 61000-4-5 10/700us 1KV (CM)
- ◇ Small SMT Packages
- ◇ PoE & PoE+ Supported
- ◇ RoHS Compliant
- ◇ Taped and Reeled for Automatic Insertion



Part Number	Description	Application	Type	Pins
NLTN	LAN Transformer Modules LAN PoE Modules	10/100 Base-T 1G Single Port Dual 10/100 Base-T	Capacitive Inductive	16, 24, 28
NTXP1210 NTXP1812	LAN Pulse Transformers 1:1 Ratio	10/100, 1G Base-T 1G, 2.5/5G Base-T 1G, 2.5/5G, 10G Base-T 2.5/5G Base-T	Signal Only PoE PoE+ PoE++	6

NIC®
NIC Components Corp.

www.NICcomp.com/edlc

North America
Tel: (631) 396-7500
sales@niccomp.com

Europe
Tel: +44 (1280) 813 737
niasales@niccomp.com

SE Asia
Tel: +65 6844-1575
niasales@niccomp.com.sg