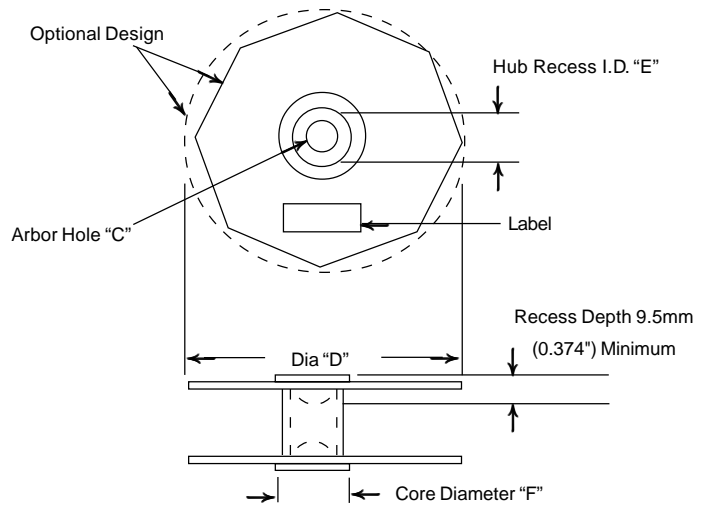
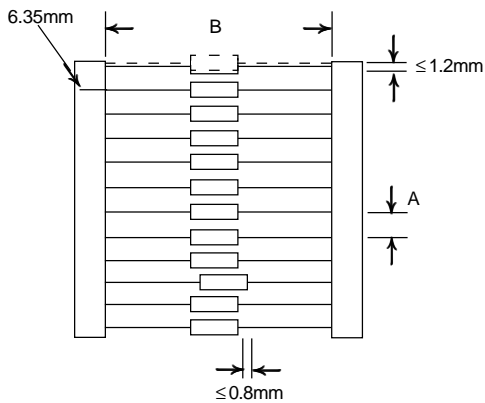


TAPE & REEL OF AXIAL LEAD CAPACITORS FOR AUTOMATIC INSERTION EIA STANDARD RS-296-D

LEADED



Capacitor Body Diameter	Capacitor Pitch "A" ±0.5mm (0.020")
≤ 5mm (≤ 0.197")	5mm or 0.200"
5.01-10mm (0.197-0.394")	10mm or 0.400"
10.01-15mm (0.394-0.591")	15mm or 0.600"

Capacitor Body Length	Inside Tape Spacing "B" ±1.5mm (0.059")
≤ 16.50mm (≤ 0.65")	52.4mm or 2.062"
16.51-28.45mm (0.651-1.12")	63.5mm or 2.500"
28.46-37.00mm (1.121-1.45")	73.0mm or 2.874"

REEL DIMENSIONS

C	D	E	F
14.50mm (0.570")	381.0mm (15")	54.2mm (2.130")	61.0mm (2.401")

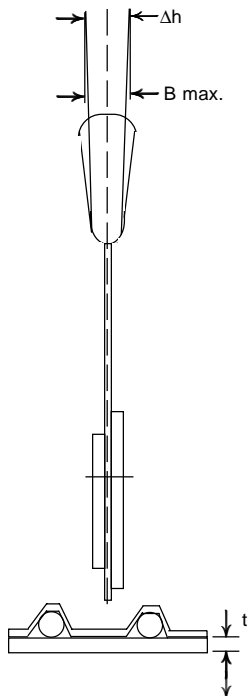
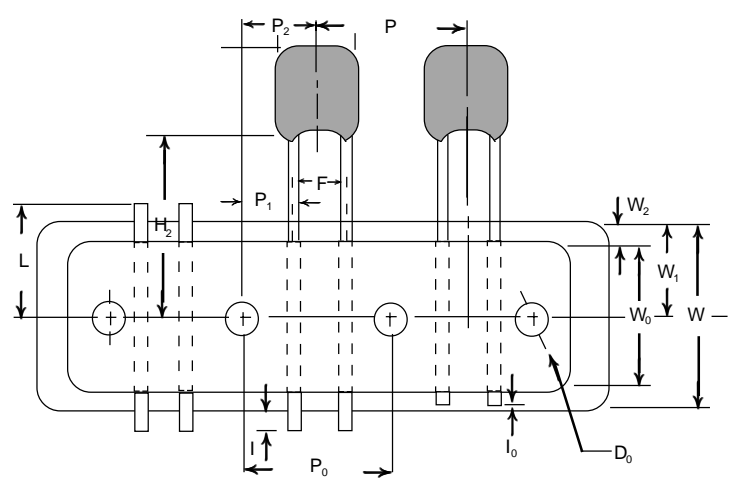
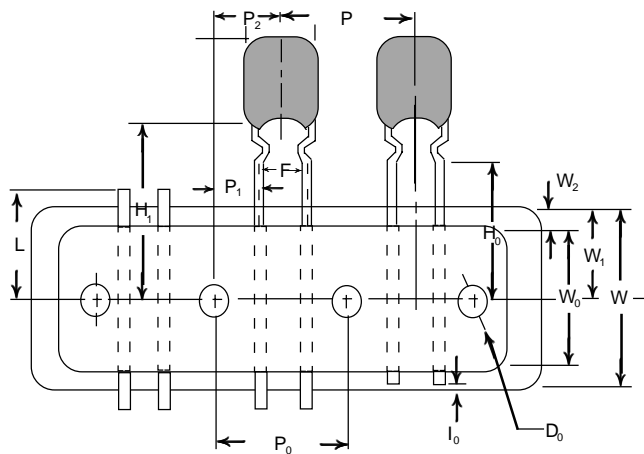
MAXIMUM QUALITY OF COMPONENTS ON REEL

Capacitor Body Dia.	Pitch	Quantity pcs/reel
≤ 5.0mm	5mm	4,000 max.
5.1-7.0mm	10mm	2,000 max.
7.1-9.5mm	10mm	1,000 max.

TAPE & REEL FOR RADIAL LEAD CAPACITOR REFER TO EIA STANDARD RS-468

CRIMPED LEAD TAPING (STANDARD)

STRAIGHT LEAD TAPING (SPECIAL) Contact NIC for Availability.



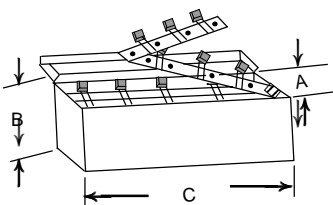
*-STANDARD LEAD SPACING ON TAPED PARTS IS 5MM. SPECIAL 7.5MM AND 10MM LEAD SPACING ARE AVAILABLE UPON SPECIAL REQUEST.

TO SPECIFIC:
LEAD SPACING
5MM
7.5MM
10MM

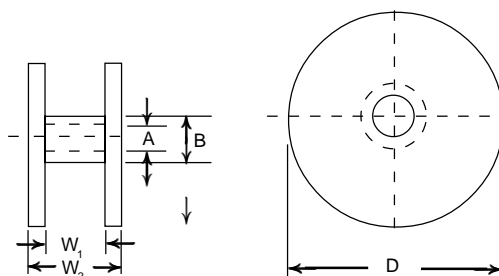
P/N SUFFIX
TR
TR (7.5MMLS)
TR (10MMLS)

Dimensions mm (inch)			
P	12.7	±1.0	(0.5 ±0.0394)
P ₀	12.7	±0.2	(0.5 ±0.008)
P ₂	6.35	±1.3	(0.25 ±0.051)
P ₁	3.85	±0.5	(0.152 ±0.020)
F *	5.0	±0.8	(0.197 ±0.0315)
Δh	0	±2.0	(0 ±0.0787)
W	18.0	±0.5	(0.709 ±0.020)
W ₁	9.0	±0.5	(0.354 ±0.020)
H ₁	20.0	±0.75	(0.787 ±0.030)
H ₂	18.0	±0.5	(0.709 ±0.020)
H ₀	16.0	±0.5	(0.630 ±0.020)
I	2.0	Max.	(0.079 Max.)
I ₀	7.0	Max.	(0.276 Max.)
ØD ₀	4.0	±0.2	(0.157 ±0.008)
W ₀	12.5	Min.	(0.492 Min.)
t	0.7	±0.2	(0.028 ±0.008)
W ₂	3.0	Max.	(0.118 Max.)
L	11.0	Max.	(0.433 Max.)

AMMO BOX PACKING TB (TAPE BOX)



REEL PACKING TR (TAPE/REEL)



DIMENSIONS

A - 15mm
B - 80mm
D - 370mm
W₁ - 45mm
W₂ - 55mm